



5620 Industrial Rd
Fort Wayne, IN 46825
(866)603-6290 fax (260)431-0079

QUOTE

Customer

Company Town of Munster

Phone

Fax:

Project New TTMA-200

Date 2/3/2023

Order No. 232023

TERMS NET 15 DAYS

Qty	Description	Unit Price	TOTAL
1	TTMA-200 Gregory Attenuator w/Whelan Light Package	\$22,000.00	\$22,000.00
Delivery is included with the pricing.			

COMMENTS:

QUOTED BY: Nicole Headlee

SubTotal	\$22,000.00
Sales Tax	
Shipping & Handling	
TOTAL	\$22,000.00

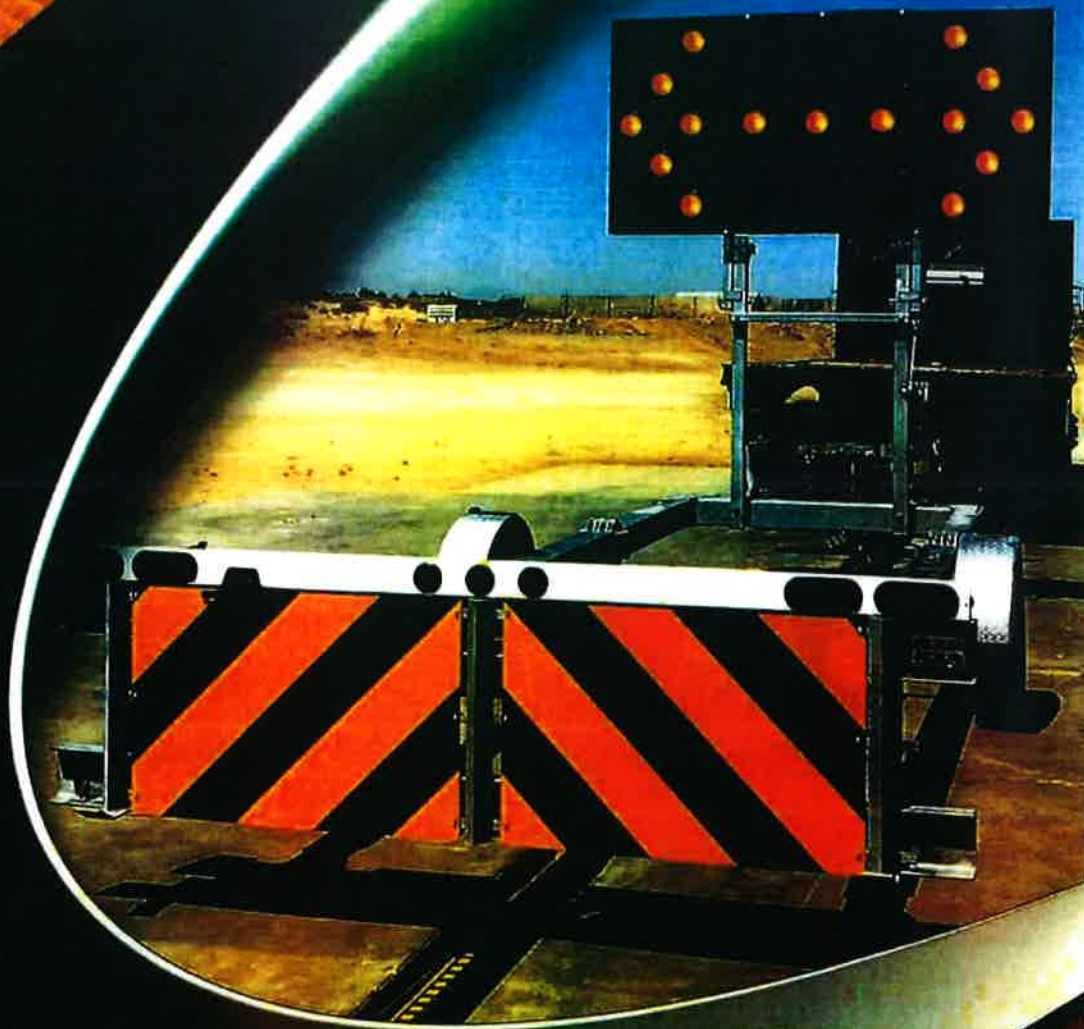
*This is an estimate of the damages based on the photos that were sent to us.
If we repair the unit and find any other areas that were damaged and need
repaired on the unit that are not on this quote we will notify you immediately.*

THANK YOU FOR YOUR INTEREST IN OUR SERVICES

TTMA-200

MASH Trailer Truck
Mounted Attenuator

MASH 2016 TESTED



Gregory

1-866-994-4929 www.gregorycorpmobile.com

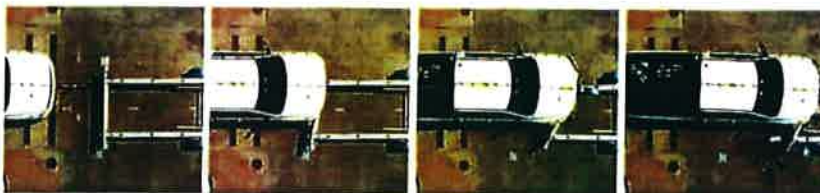
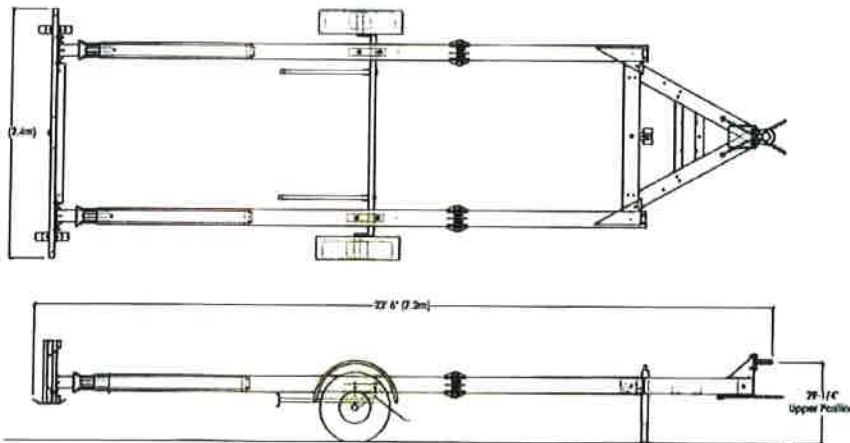
TTMA-200

Trailer Truck Mounted Attenuator

- Meets all required MASH TL-3 testing criteria.
- Patented, energy-absorbing technology simplifies design and reduces costs.
- Single-point, eight-ton minimum pintle hitch mount.
- Can be used with most support vehicles weighing 10,000 lbs. or more.
- Requires no dedicated support vehicle, and support can be changed in minutes.
- Fully galvanized and built to last against moisture and corrosion.
- Adaptable to sweeping, salting, sanding, mowing and striping operations.
- Can be equipped with optional items including arrow board stand, arrow board and hitch extensions.

SPECIFICATIONS

- W 96 in. x H 39 in. x L 23.5 ft. (W 2.4 m x H 990.6 mm x L 7.2 m).
- 1,450 lbs. (658 kg) (Approximate weight).
- 1,750 lbs. with an arrow board (794 kg) (300 lb. tongue weight) (Approximate weight).
- Eight-ton pintle hook height 19.5 in. to 32 in. (49.53 cm to 81.28 cm).
- Hot-dip galvanized.
- MASH TL-3 compliant (passed Test Level 3-50, 3-51, 3-52, 3-53).



1-866-994-4929 www.gregorycorpmobile.com

Gregory Industries, Inc. • 4100 13th Street, SW • Canton, Ohio 44710

TTMA-200

TECHNICAL HIGHLIGHTS

MASH 2016 TESTED AND PASSED

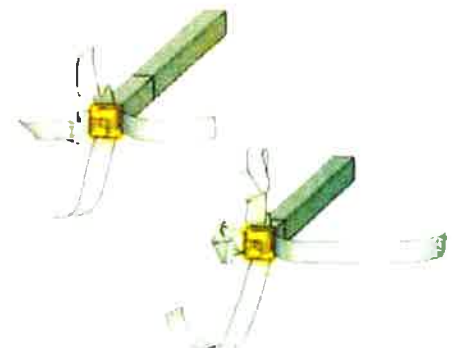
The TTMA-200 was successfully tested and passed all required MASH crash test criteria. FHWA Eligibility Letter currently pending.

PATENTED ENERGY-ABSORBING TECHNOLOGY

An oversized mandrel pushes into the smaller tube, splitting the tube into four strips of metal dissipating the impact energy. The metal strips remain with the trailer and pose no hazard to adjacent traffic. This allows the trailer frame to serve as the energy absorber, simplifying the design and reducing cost.

FLEXIBILITY

Quick attachment to any support vehicle with GVW of 10,000 lbs. or more (no maximum weight limit). Only a standard 8-ton pintle hitch is needed for towing and no vehicle modifications are required. This eliminates the need for a dedicated support vehicle.



Energy-Absorbing Technology



MUNSTER PUBLIC WORKS - VEHICLE / EQUIPMENT QUOTE SUMMARY

DESCRIPTION of NEW VEHICLE / EQUIPMENT

TTMA-200 Gregory Attenuator trailer w/ Arrow

DIVISION STREET WATER / SEWER

IS THIS IN THE CITY? YES

HOW MUCH in the CIP \$ 21,000

HOW MUCH in the G.O. Bond \$ _____

DESCRIPTION of OLD VEHICLE / EQUIPMENT (for TRADE)

UNIT # _____ YEAR _____ FRAME MILES _____ HOURS _____ x60 = EQUIVALENT ENGINE MILES _____

DESCRIPTION of QUOTE

DATE: _____

DATE Price is good through: 15 days

VENDOR NAME

Highway Safety Specialists

STREET ADDRESS

5620 Industrial Rd.

CITY / STATE / ZIP

Fort Wayne, Ind.

CONTACT PERSON

Nicole Hendler

CONTACT PHONE #

(866) 603-6290

EMAIL ADDRESS

nhandler@hssafety.com

CHASSIS PRICE

\$ 22,000

+ Fees

(- Discount)

Net Chassis Price =

BODY PRICE

+ Fees

(- Discount)

Net Body Price =

\$ 22,000

(- Trade-In)

TOTAL PRICE =

\$ 22,000

(Chassis + Body - Trade)