



CALUMET AVENUE & RIDGE ROAD STREETScape

TOWN OF MUNSTER

COMMITTEE MEETING #2 | NOVEMBER 18, 2020 | VIDEO-CONFERENCE



Sam
Schwartz

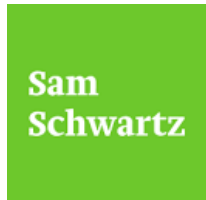
INTRODUCTIONS + PROJECT TEAM



Teska Associates | Community Planning + Landscape Architecture

Jodi Mariano, PLA, Principal Landscape Architect

Heather Faivre, PLA, Associate Landscape Architect



Sam Schwartz Consulting | Transportation + Traffic Planning

Sara Disney Haufe, PE, PTOE, Associate + Deputy Director of Traffic Engineering

PROJECT GOAL

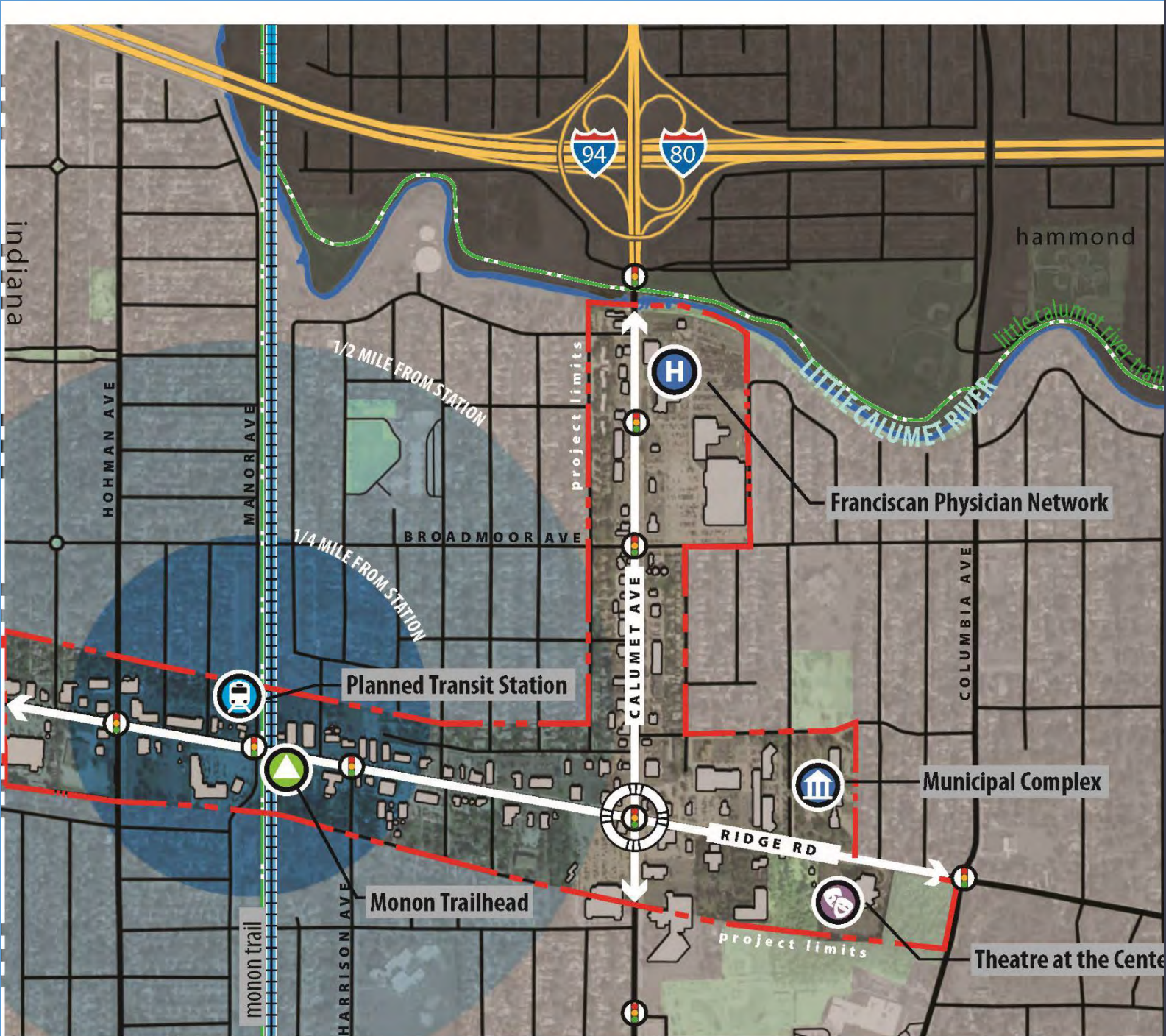
The goal of this project is to develop **a more welcoming environment for walking, biking, to reinforce a sense of place in our community, and to enhance the ability to absorb stormwater and reduce flooding.**

KEY THEMES

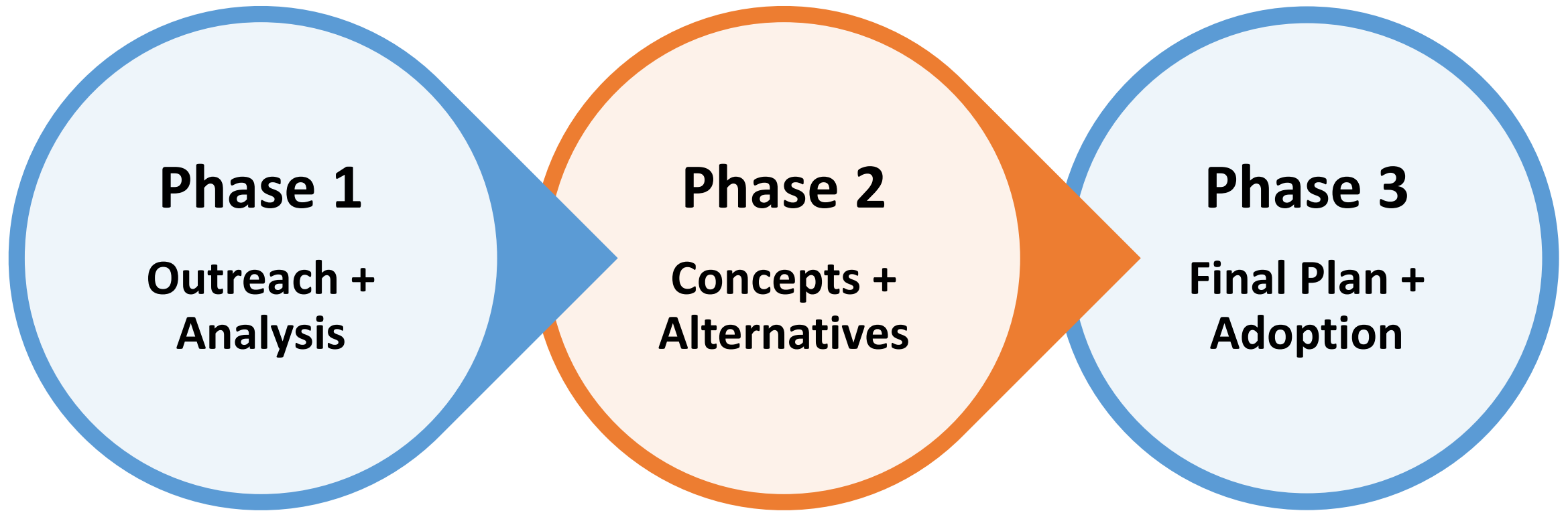
- A **safe and comfortable** pedestrian environment
- A functional streetscape providing **stormwater benefits**
- A consistent and **beautiful public realm**
- A **sense of arrival** and identity
- A multimodal system that balances **access and mobility**

FUNDING FOR THE STREETSCAPE PLAN

National Oceanic and Atmospheric Administration + the Indiana Department of Natural Resources Lake Michigan Coastal Program. **“The Coastal Grant”**



STUDY AREA



MAY – JULY 2020

**Analysis / project website
Staff meeting**

Committee meeting #1

Neighborhood poll #1

Stakeholder interviews

Farmers market pop up

AUG – DEC 2020

Concept development

Committee meeting #2

Neighborhood poll #2

Agency meetings

Public open house

JAN 2020 – MARCH 2021

Final plan + pilot project

Committee meetings #3-4

Public meeting

Town Council meeting

AGENDA

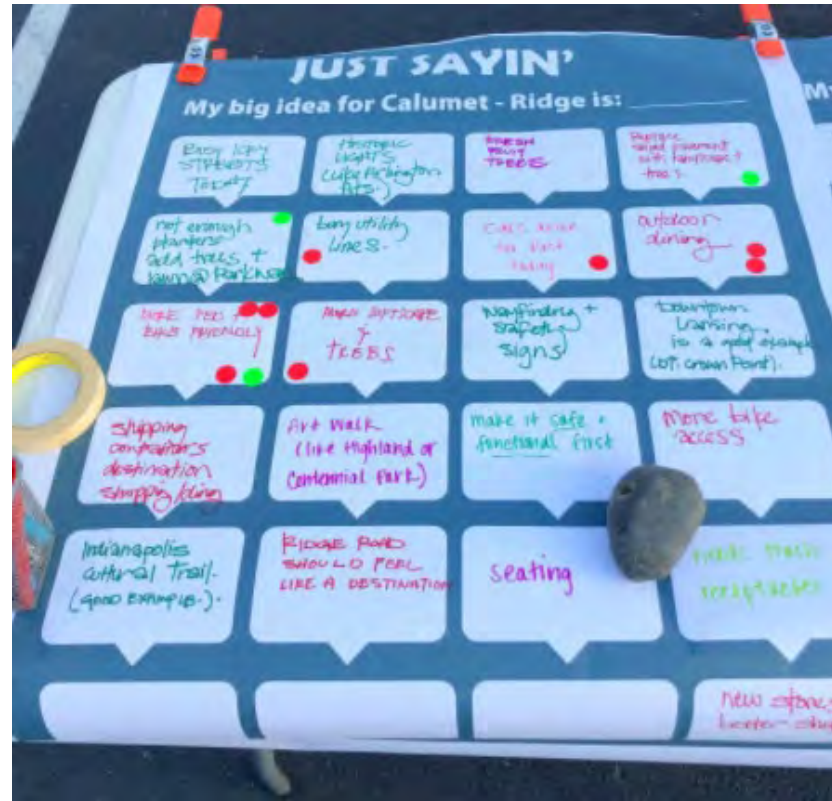
1. **Introductions, project goals + scope review**
2. **Community outreach:** stakeholder interviews, poll #1 results
3. **Concept plan presentation:** elements + concept plans
4. **Traffic considerations:** methodologies + traffic impacts
5. **Agency outreach + considerations**
6. **Workshop activity + discussion**
7. **Next Steps:** poll #2, public meeting



OUTREACH

- Project Website
- Stakeholder Interviews
- Munster Community Market
- Neighborhood Poll #1

596 Responses +
677 Individual Comments!



OUTREACH | Calumet Avenue key takeaways

1. Sidewalks and crossings are generally perceived as unsafe.
2. Speeding traffic should be calmed.
3. Left turning movements are perceived as challenging and unsafe.
4. Utility poles are unsightly.
5. Trees and greening are lacking.
6. The corridor needs an attractive entry to Munster.



OUTREACH | Ridge Road key takeaways

1. Sidewalks and crossings are generally perceived as unsafe.
2. Additional traffic on Ridge Road seems to coincide with I-94 backups.
3. Outdoor seating + dining are positive trends that should be supported in the public way.
4. Businesses need more parking.
5. Trees and greening are lacking.
6. The planter pots and decorative lights are mismatched and appear 'tired'.
7. The corridor has attractive features but lacks a sense of place.

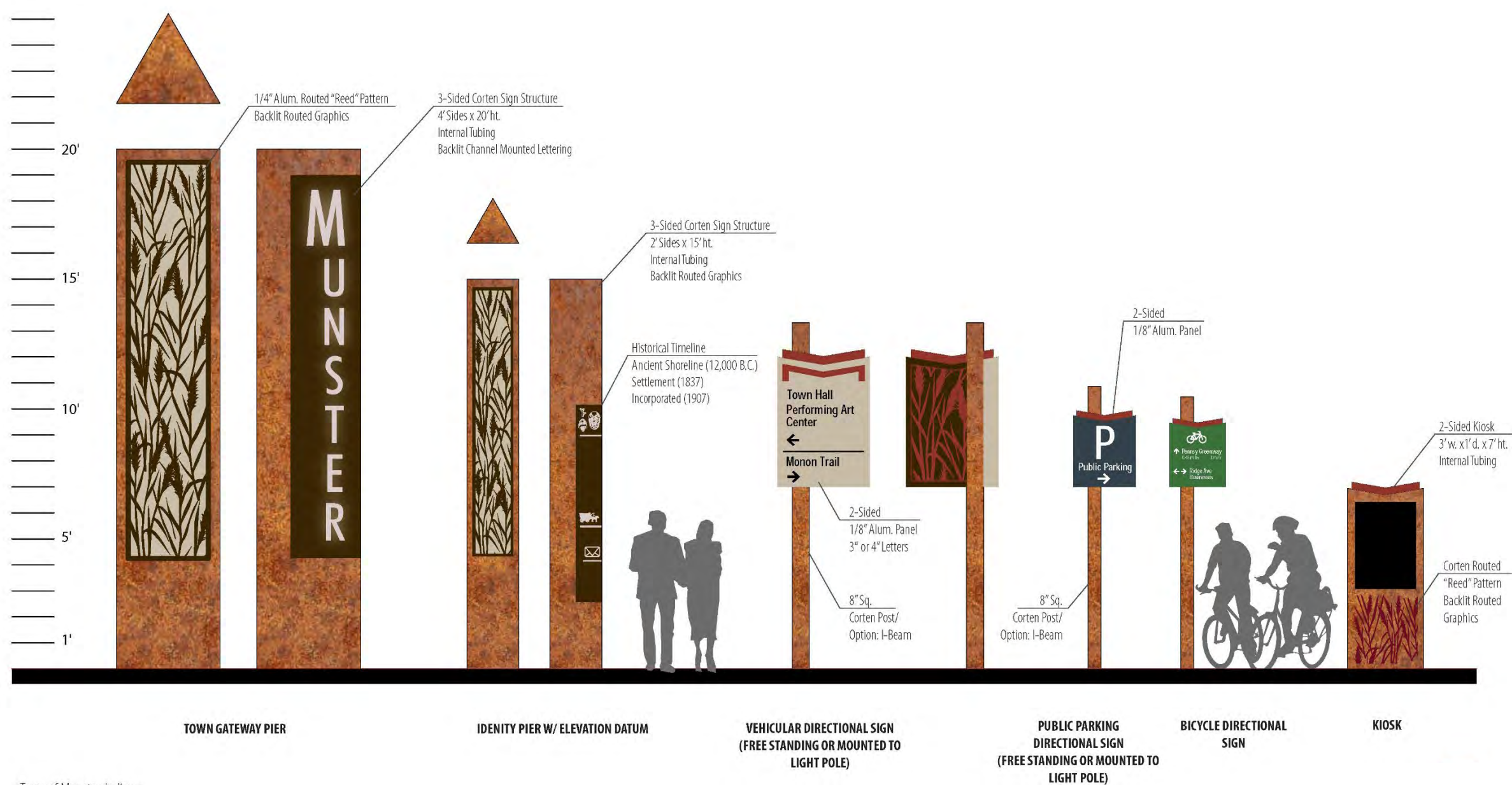


OUTREACH | Community poll #1

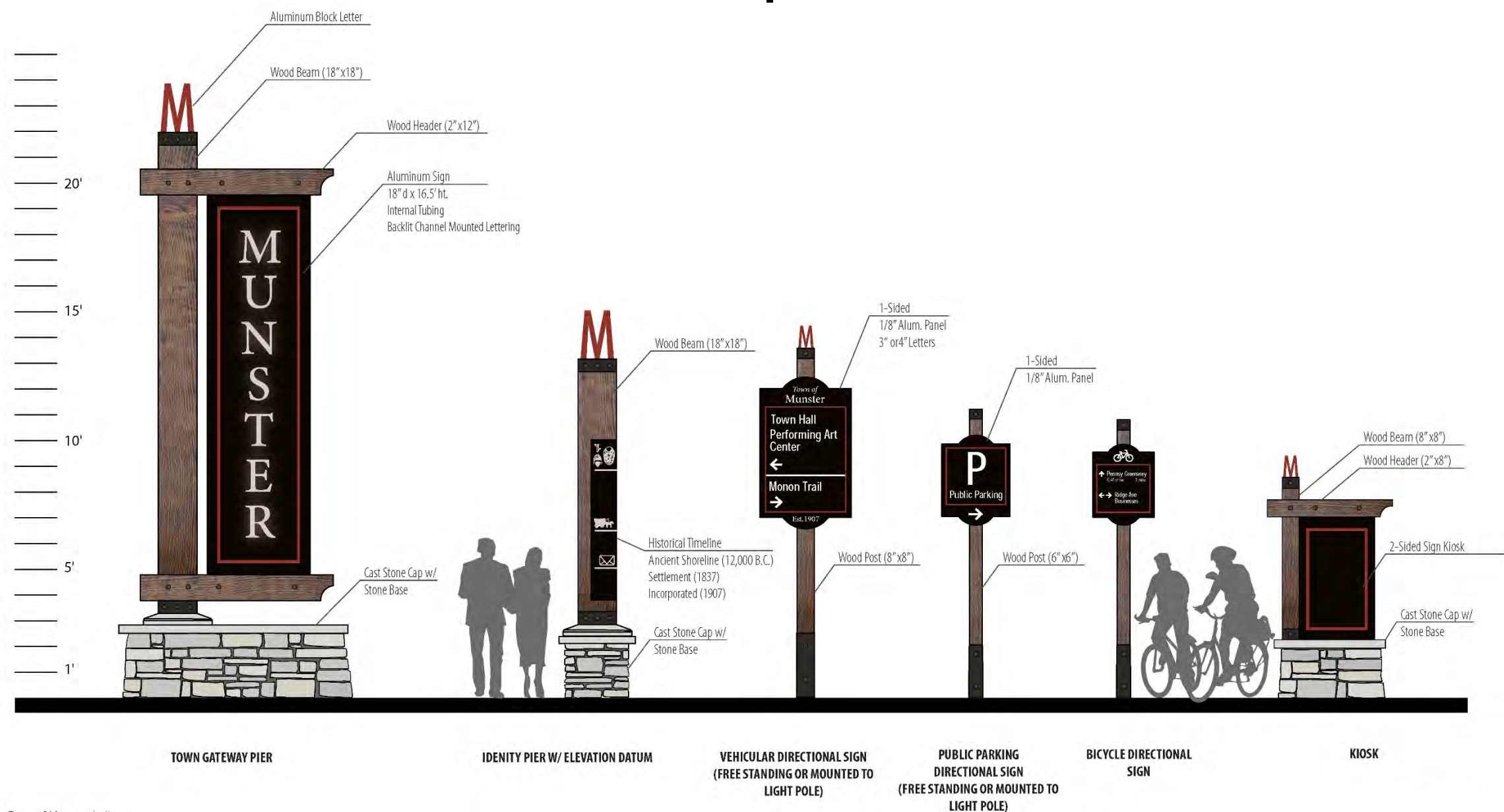
If you had a magic wand, what would you do to improve the Calumet Ave / Ridge Road Corridor?

- 1. Safety first**
- 2. Calm traffic**
- 3. Improve biking and walking**
- 4. Create an attractive atmosphere**
- 5. Declutter the streetscape**
- 6. Make it greener**
- 7. Work with property owners to improve their curb appeal**
- 8. Maintenance is key**

CONCEPT PLAN PRESENTATION | Metal Sign Family



CONCEPT PLAN PRESENTATION | Stone + Timber Sign Family



CONCEPT PLAN PRESENTATION | Furnishings - Rustic

TIMBER + STEEL BENCH BACKLESS BENCH
STREETLIFE, DRIFTER BENCH



WOOD + STEEL BENCH WITH BACK
STREETLIFE, ROUGH AND READY 6 BENCH



WOOD + CORTEN BIKE RACK
STREETLIFE, SOLID BIKE PARKING



CORTEN TREE GRATE
STREETLIFE, TREE GRILLES
CORTEN SQUARE



WOOD + ALUMINUM LITTER + RECYCLING RECEPTACLE
FORMS+SURFACES, CORDIA



IRON TRENCH GRATE
IRON AGE DESIGNS, GROUND SWELL



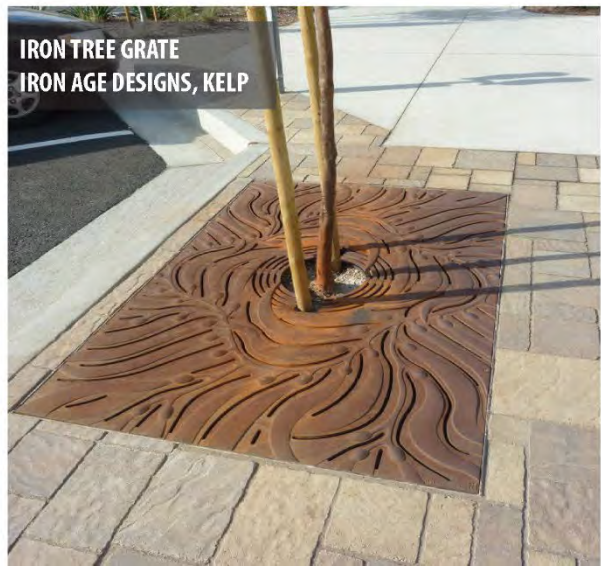
METAL STREET BANNER



FABRIC STREET BANNER



CONCEPT PLAN PRESENTATION | Furnishings - Refined



CONCEPT PLAN PRESENTATION | Plantings



American Hornbeam
Carpinus caroliniana
Mature Height: 25'
Mature Width: 25'
Pollinators: Butterflies/Moths



Black Tupelo
Nyssa sylvatica
Mature Height: 40'
Mature Width: 50'
Pollinators: Bees



Common Hackberry
Celtis occidentalis
Mature Height: 60'
Mature Width: 50'
Pollinators: Butterflies/Moths



Kentucky Coffeetree
Gymnocladus dioica
Mature Height: 50'
Mature Width: 50'
Pollinators: Butterflies/Moths



Ohio Buckeye
Aesculus glabra
Mature Height: 30'
Mature Width: 30'
Pollinators: Bees & Hummingbirds



Red Maple
Acer rubrum
Mature Height: 45'
Mature Width: 40'
Pollinators: Bees & Butterflies/Moths



Swamp White Oak
Quercus bicolor
Mature Height: 50'
Mature Width: 40'
Pollinators: Butterflies/Moths



Yellowwood
Cladastis kentuckea
Mature Height: 40'
Mature Width: 40'
Pollinators: Butterflies/Moths



Dwarf Bush Honeysuckle
Diervilla lonicera
Mature Height: 1'-3'
Mature Width: 3'-5'
Flower Color: Red/Orange/Yellow
Pollinators: Butterflies & Hummingbirds



Kalm's St. John's wort
Hypericum kalmianum
Mature Height: 2'-3'
Mature Width: 3'-4'
Flower Color: Yellow
Pollinators: Bees



New Jersey Tea
Ceanothus americanus
Mature Height: 2'-3'
Mature Width: 2'-3'
Flower Color: White
Pollinators: Bees, Butterflies/Moths, & Hummingbirds



Arctostaphylos uva-ursi
Bearberry
Mature Height: 1'
Mature Width: 3'-6'
Flower Color: White/Pink
Pollinators: Bees, Butterflies/Moths, & Hummingbirds



NOTE: Mature tree heights and widths are dependent on soil conditions and maintenance practice.

CONCEPT PLAN PRESENTATION | Plantings



Butterflyweed
Asclepias tuberosa
Mature Height: 1'
Mature Width: 2'
Flower Color: Orange
Pollinators: Bees & Butterflies/Moths



Lance-Leaf Coreopsis
Coreopsis lanceolata
Mature Height: 2'
Mature Width: 1'-2'
Flower Color: Yellow
Pollinators: Bees, Butterflies/Moths & Flies



Narrow-Leaf Mountain Mint
Pycnanthemum tenuifolium
Mature Height: 2'
Mature Width: 2'-3'
Flower Color: White
Pollinators: Bees, Butterflies/Moths, Flies, & Wasps



Nodding Wild Onion
Allium cernuum
Mature Height: 1'-2'
Mature Width: 1'
Flower Color: Pink
Pollinators: Bees, Butterflies/Moths, & Hummingbirds



Palm Sedge
Carex muskingumensis
Mature Height: 1'-3'
Mature Width: 1'-3'



Prairie Dropseed
Sporobolus heterolepis
Mature Height: 1'-2'
Mature Width: 2'-3'



Prairie Junegrass
Koeleria macrantha
Mature Height: 1'-2'
Mature Width: 1'-2'



Prairie Sedge
Carex bicknellii
Mature Height: 1'-3'
Mature Width: 1'-3'



Sideoats Grama
Bouteloua curtipendula
Mature Height: 1'-2.5'
Mature Width: 1'-2'
Pollinators: Butterflies/Moths



Smooth Blue Aster
Aster laevis
Mature Height: 2'-3'
Mature Width: 2'-4'
Flower Color: Blue
Pollinators: Butterflies/Moths



Black-eyed Susan
Rudbeckia hirta
Mature Height: 2'-3'
Mature Width: 2'
Flower Color: Yellow
Pollinators: Butterflies/Moths



Wild Columbine
Aquilegia canadensis
Mature Height: 2'
Mature Width: 1'-2'
Flower Color: Red/Yellow
Pollinators: Butterflies/Moths & Hummingbirds



Wild Geranium
Geranium maculatum
Mature Height: 1'-2'
Mature Width: 1'-2'
Flower Color: Lavender
Pollinators: Bees, Butterflies/Moths, & Flies



Lance-Leaf Coreopsis
Coreopsis lanceolata
Mature Height: 2'
Mature Width: 1'-2'
Flower Color: Yellow
Pollinators: Bees, Butterflies/Moths & Flies



Narrow-Leaf Mountain Mint
Pycnanthemum tenuifolium
Mature Height: 2'
Mature Width: 2'-3'
Flower Color: White
Pollinators: Bees, Butterflies/Moths, Flies, & Wasps



Palm Sedge
Carex muskingumensis
Mature Height: 1'-3'
Mature Width: 1'-3'



Prairie Dropseed
Sporobolus heterolepis
Mature Height: 1'-2'
Mature Width: 2'-3'



Prairie Sedge
Carex bicknellii
Mature Height: 1'-3'
Mature Width: 1'-3'



Smooth Blue Aster
Aster laevis
Mature Height: 2'-3'
Mature Width: 2'-4'
Flower Color: Blue
Pollinators: Butterflies/Moths

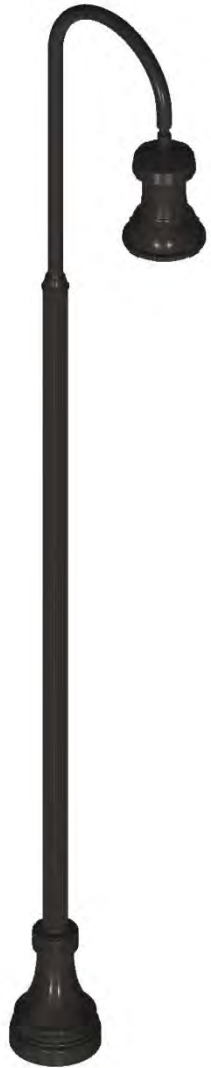


CONCEPT PLAN PRESENTATION | Roadway Lights + Signals



45th and Calumet Ave

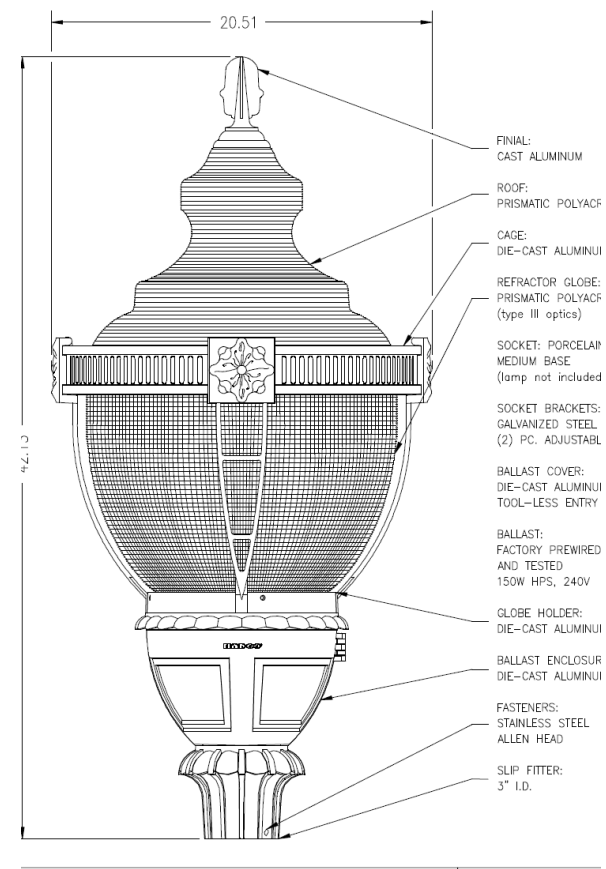
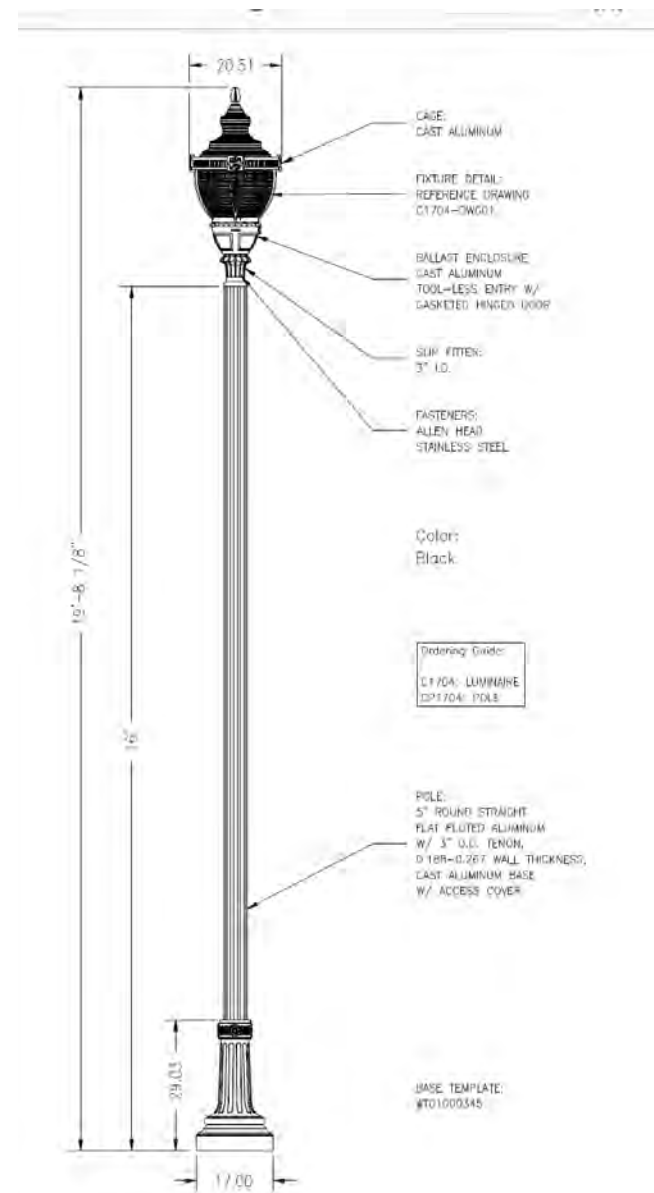
CONCEPT PLAN | Pedestrian Lights Shepherd's Hook Option



CONCEPT PLAN | Pedestrian Lights Post Top Option



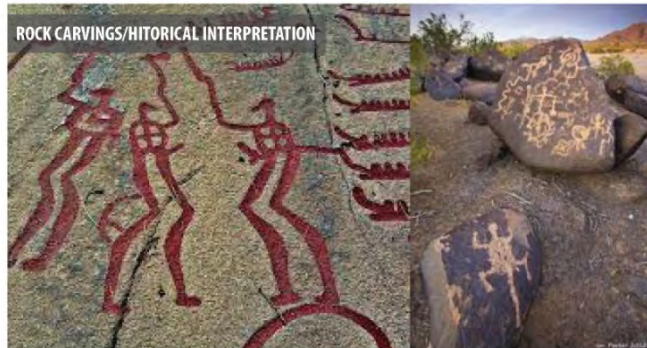
CONCEPT PLAN | Pedestrian Lights Caged Acorn Option



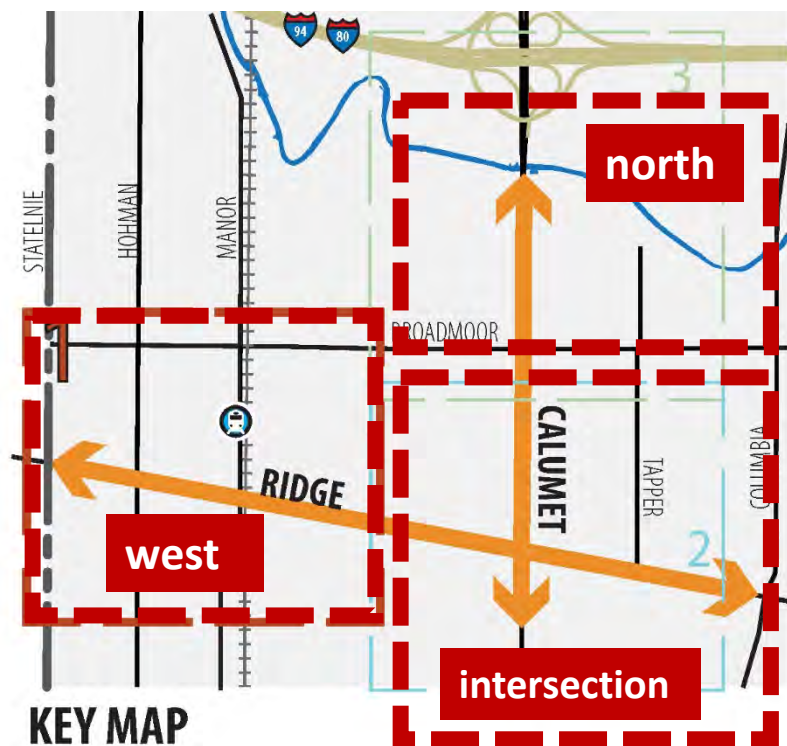
Hohman Avenue











CONCEPT PLAN PRESENTATION | Public Art













CONCEPT PLAN | Min vs Max Roadway Change



LEGEND

- | | | | |
|---|---|---|----------------|
|  | SIGNALIZED INTERSECTION |  | PARCEL LINE |
|  | PLANNED TRANSIT STATION LOCATION |  | RIGHT OF WAY |
|  | PLANNED TRANSIT RAIL LINE |  | CONTOUR LINE |
|  | POTENTIAL RELOCATION FOR
OVERHEAD POWERLINES
(FURTHER STUDY REQUIRED) |  | REGIONAL TRAIL |

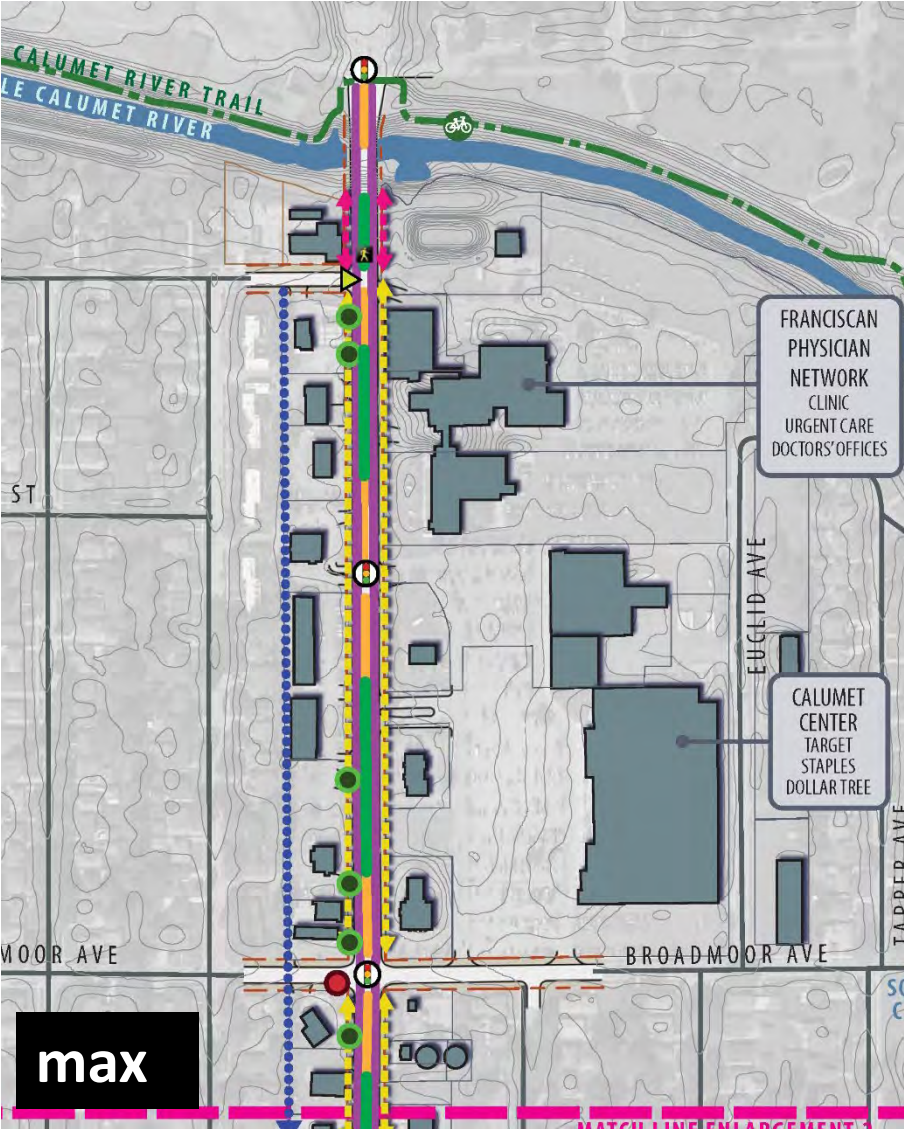
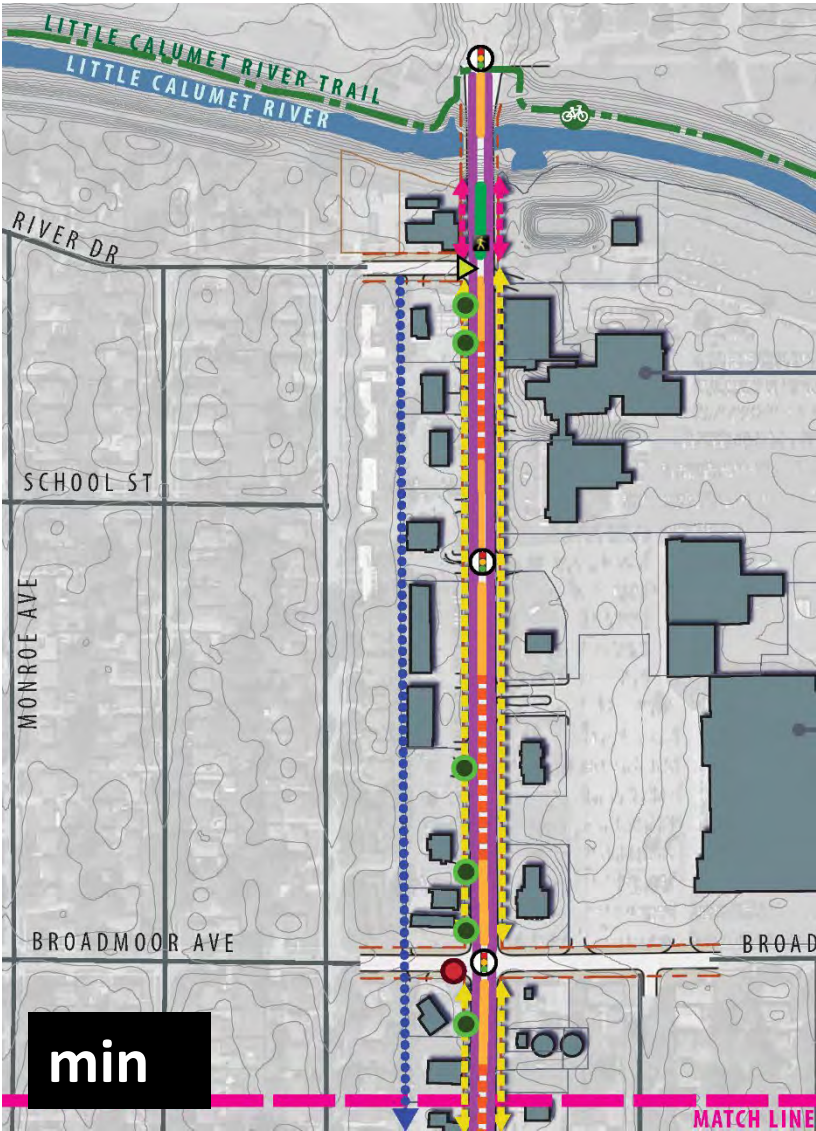
ROADWAY

- | | |
|---|---------------------------|
|  | (2) TRAVEL LANES |
|  | 2-WAY LEFT TURN LANE |
|  | DEDICATED LEFT TURN LANE |
|  | DEDICATED RIGHT TURN LANE |
|  | LANDSCAPE MEDIAN |
|  | MID-BLOCK CROSSING |
|  | RIGHT IN/RIGHT OUT |
|  | MODIFIED CURB-CUT |
|  | CLOSED CURB-CUT |
|  | NEW CURB-CUT |

RIGHT OF WAY TO CURB

- 
- The diagram illustrates five different street cross-sections, each represented by a colored arrow pointing left and right, indicating the width of the sidewalk and the presence of trees or landscaping. The text to the right of each arrow describes the specific features of that street type.
- DOWNTOWN STREETSCAPE**
(WIDE SIDEWALKS 11'-16' WIDTH, TREES IN GRATES/PLANTERS, DECORATIVE PAVING)
 - 6' SIDEWALKS W/ LANDSCAPE PARKWAY**
 - 10'to 12' SIDEWALK**
 - 7'-6" to 8'-6" SIDEWALK**
 - 5'-6" to 6' SIDEWALK**

CONCEPT PLAN PRESENTATION | Min vs Max - north



- ROADWAY**
- (2) TRAVEL LANES
 - (1) TRAVEL LANE
 - 2-WAY LEFT TURN LANE
 - DEDICATED LEFT TURN LANE
 - DEDICATED RIGHT TURN LANE
 - LANDSCAPE MEDIAN
 - ON-STREET PARKING
 - MID-BLOCK CROSSING
 - RIGHT IN/RIGHT OUT
 - MODIFIED CURB-CUT
 - CLOSED CURB-CUT
 - NEW CURB-CUT
- RIGHT OF WAY TO CURB**
- DOWNTOWN STREETScape
(WIDE SIDEWALKS 11'-16" WIDTH, TREES IN GRATES/PLANTERS, DECORATIVE PAVING)
 - 6' SIDEWALKS W/ LANDSCAPE PARKWAY
 - 10' to 12' SIDEWALK
 - 7'-6" to 8'-6" SIDEWALK
 - 5'-6" to 6' SIDEWALK
 - 10' MULTI-USE PATH (PED/BICYCLE)

CONCEPT PLAN PRESENTATION | Photovisualizations

Gateway entry sign and salt tolerant trees, shrubs + grasses

Replace railing with steel-backed timber rail

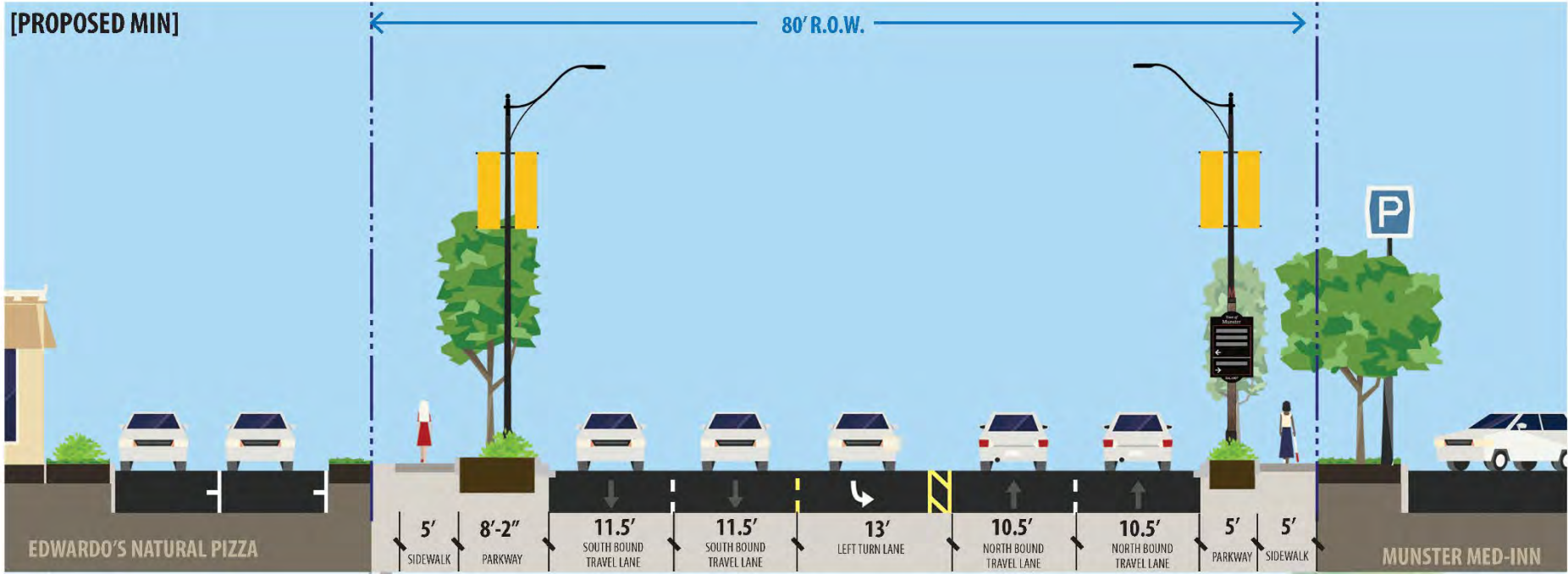
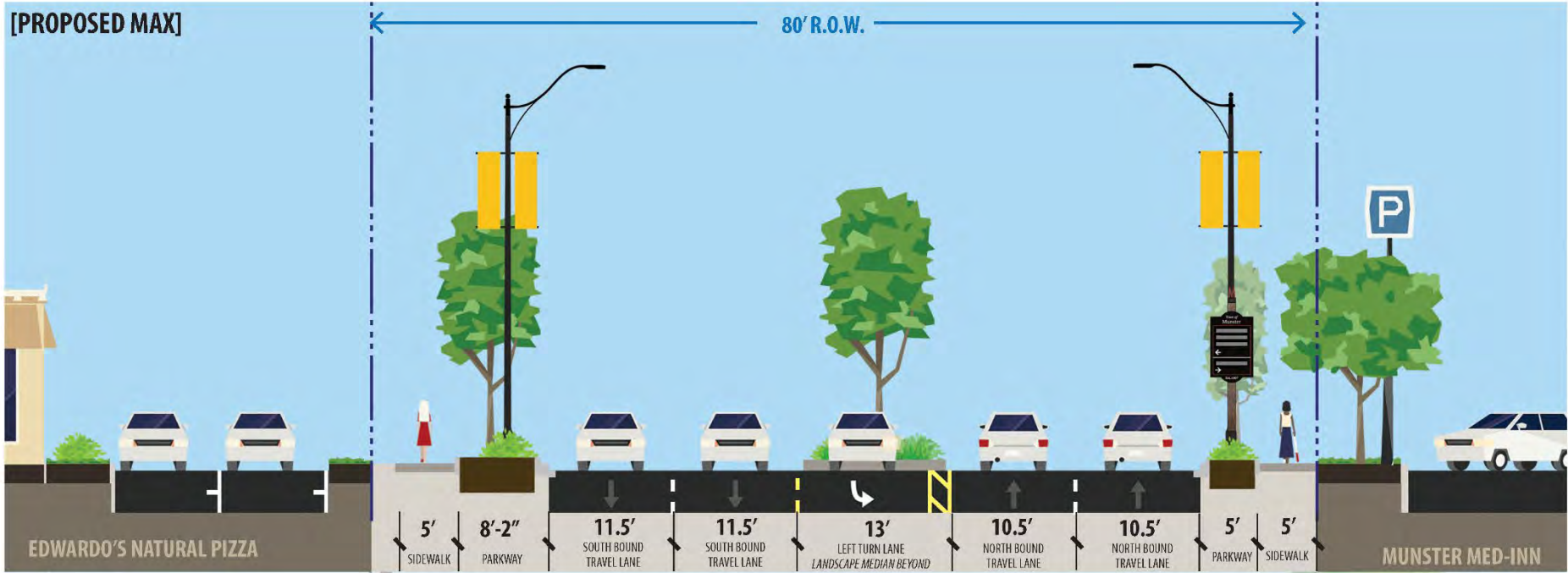
Mural (requires coordination with Hospital)

Replace railing with steel-backed timber rail



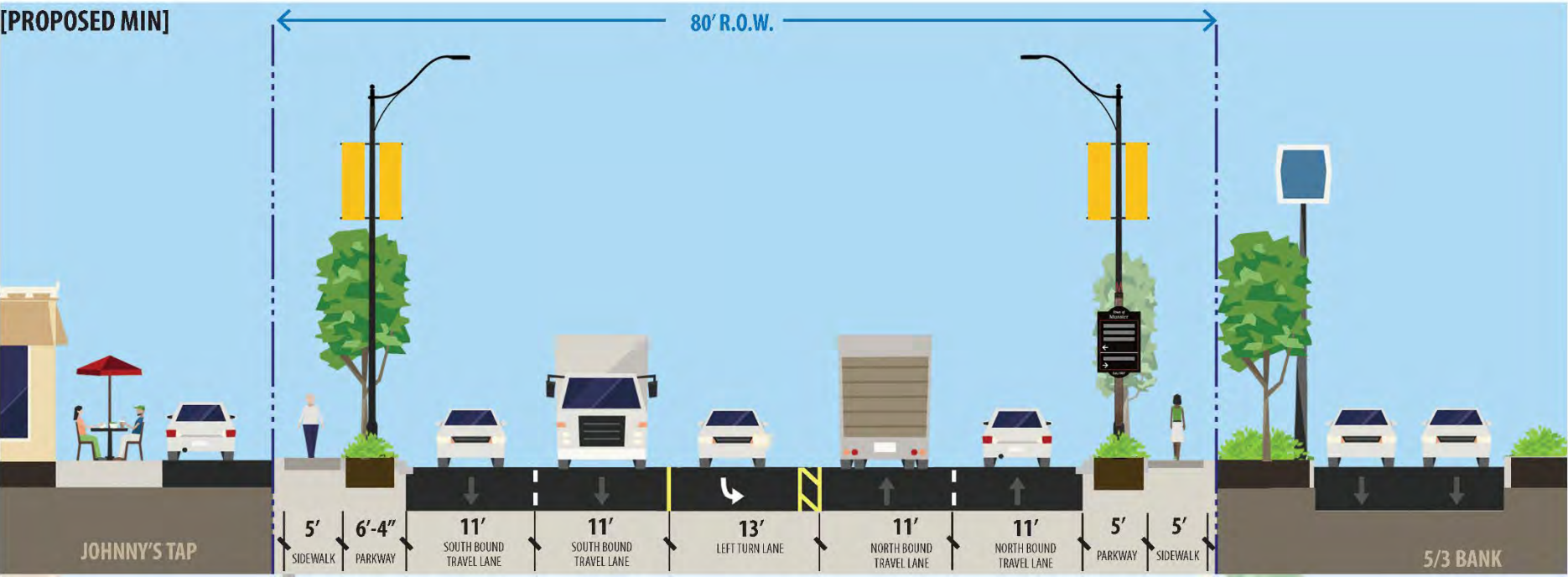
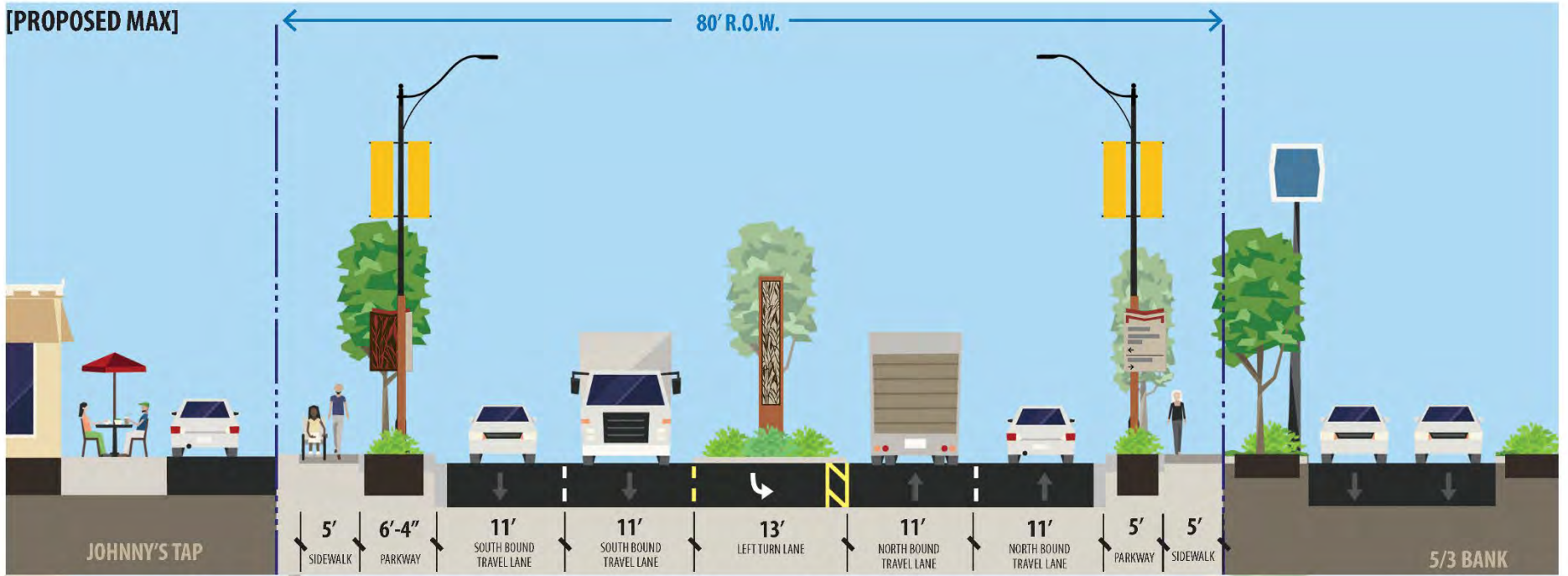
Calumet Ave Sections

South of River Drive

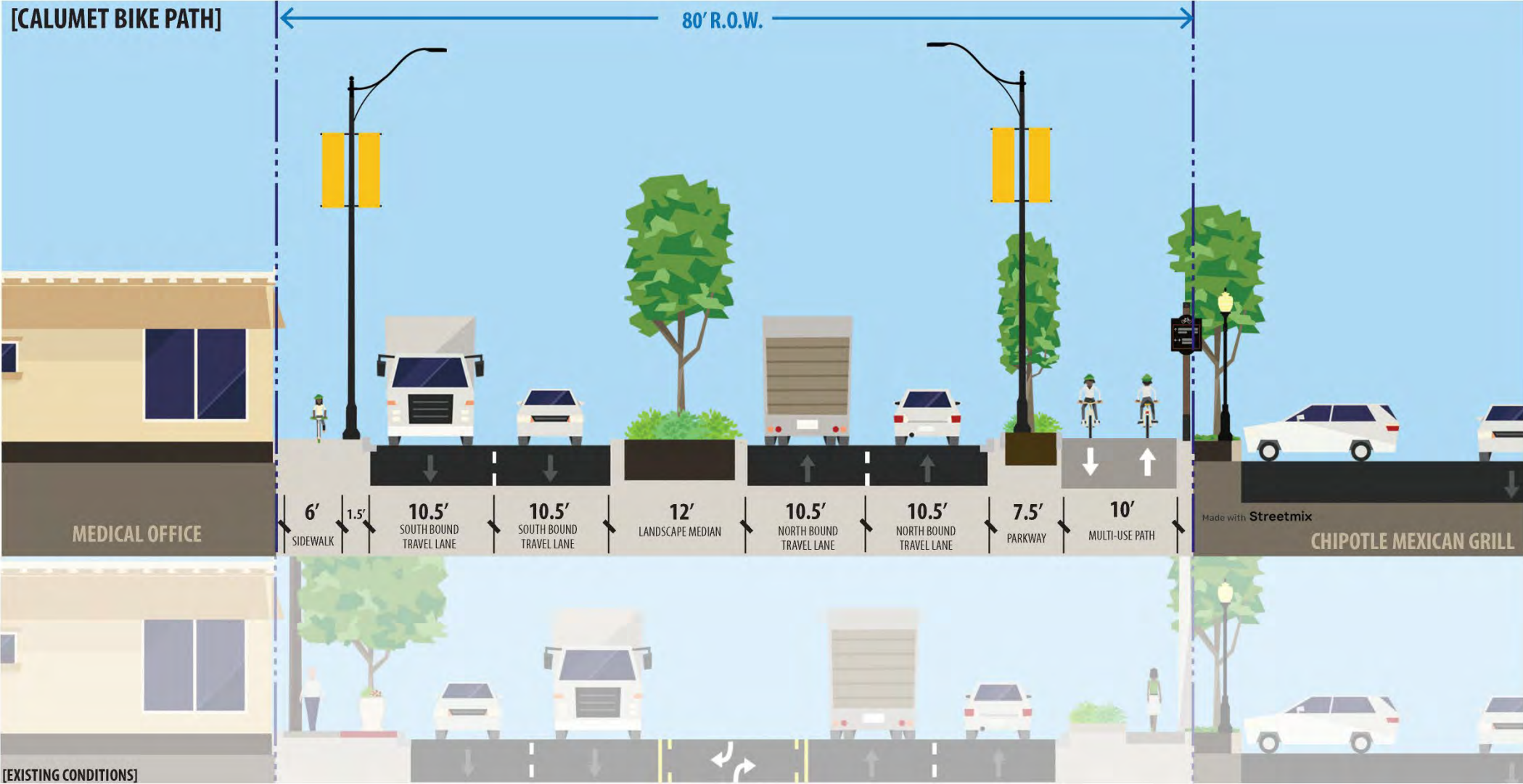


Calumet Ave Sections

North of Broadmoor Ave



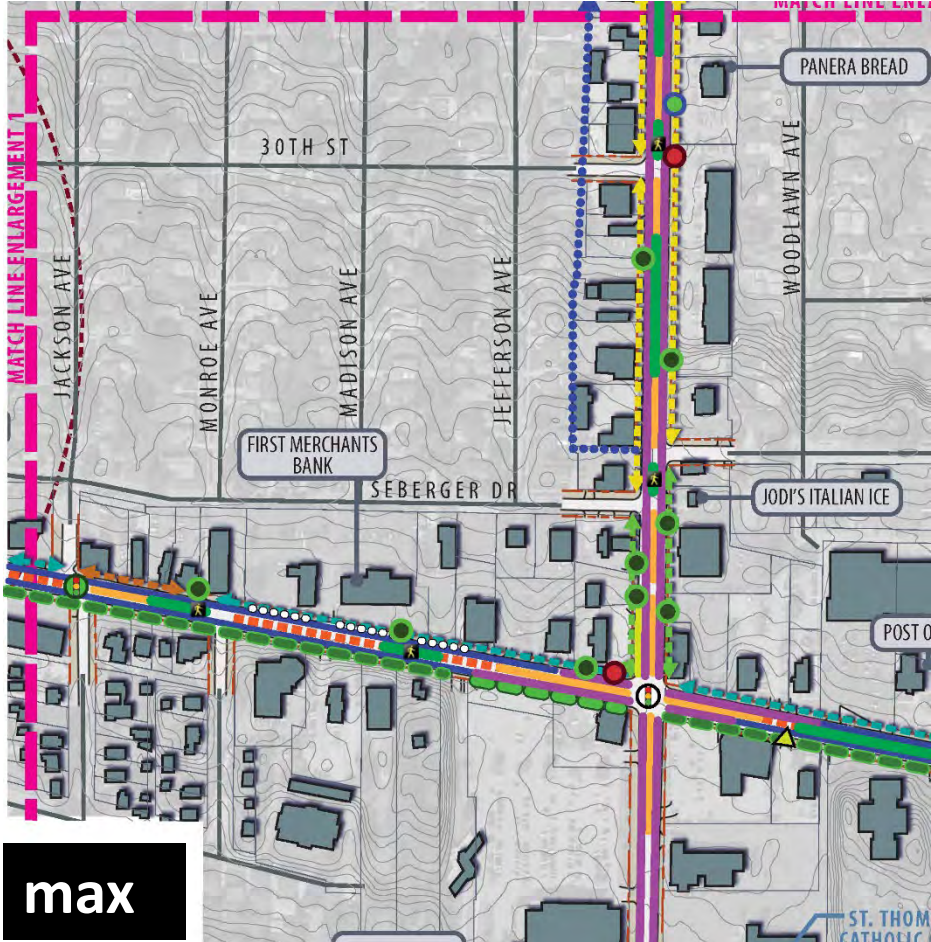
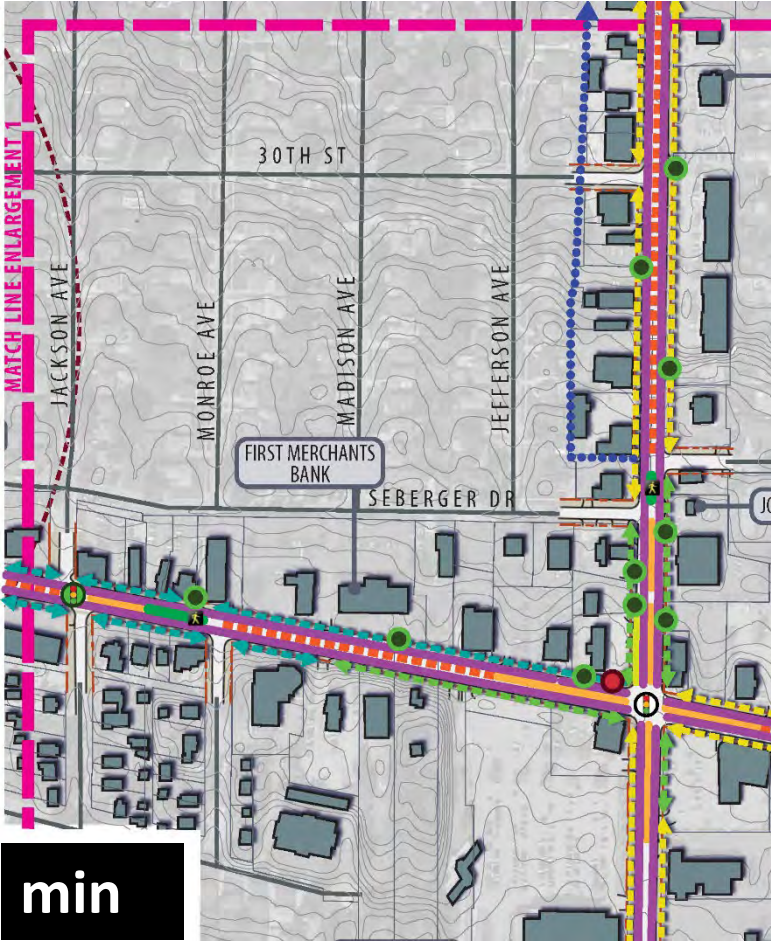
Calumet Ave Sections | Bike Path Study



CONCEPT PLAN PRESENTATION | Enlargements

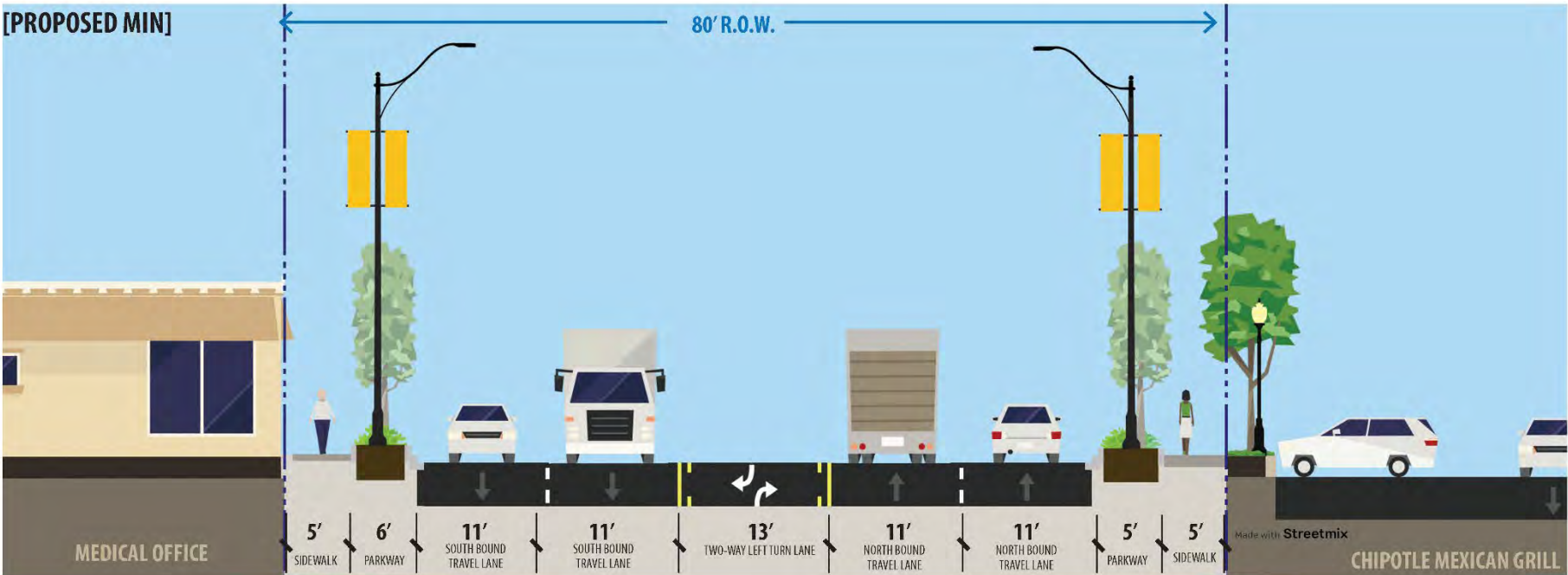
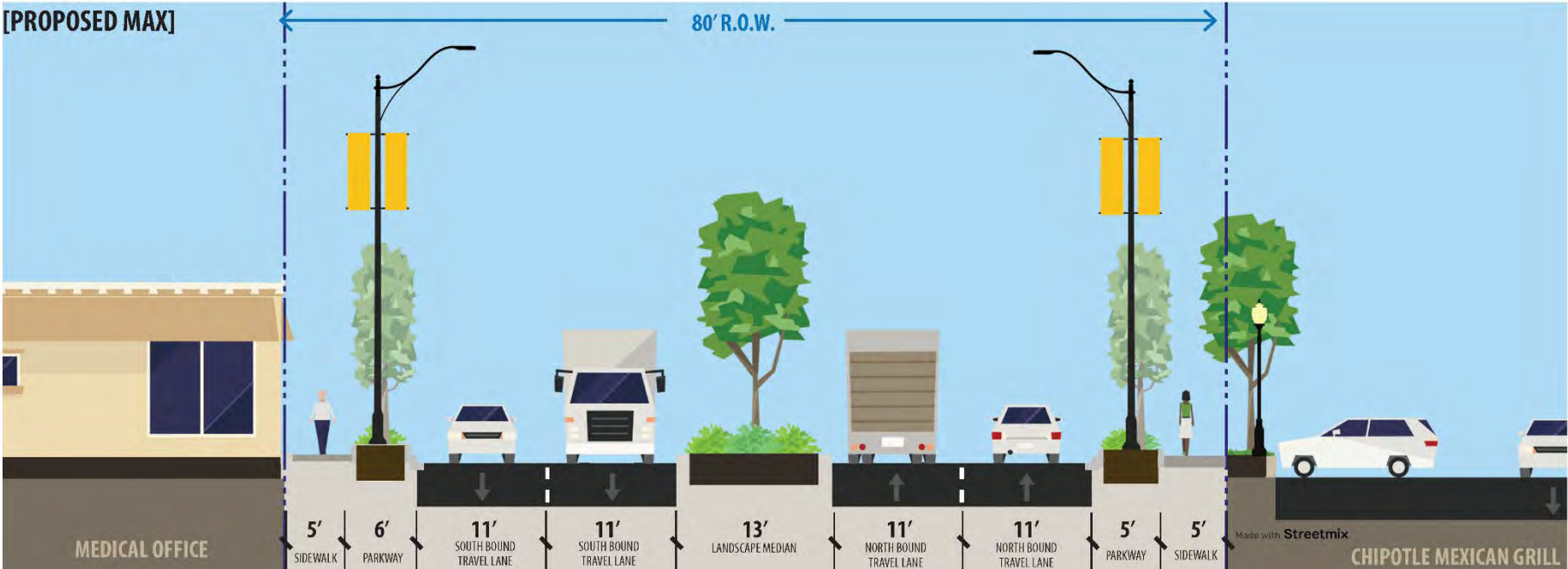


CONCEPT PLAN PRESENTATION | Min vs Max - intersection

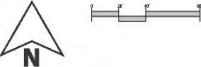


Calumet Ave Sections

South of 30th Street



CONCEPT PLAN PRESENTATION | Enlargements

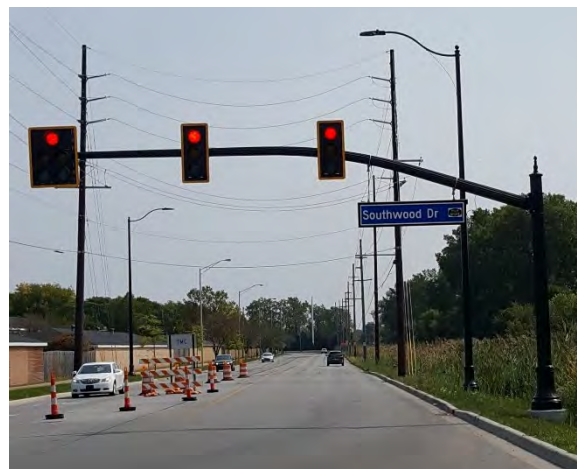


CONCEPT PLAN PRESENTATION | Photovisualizations

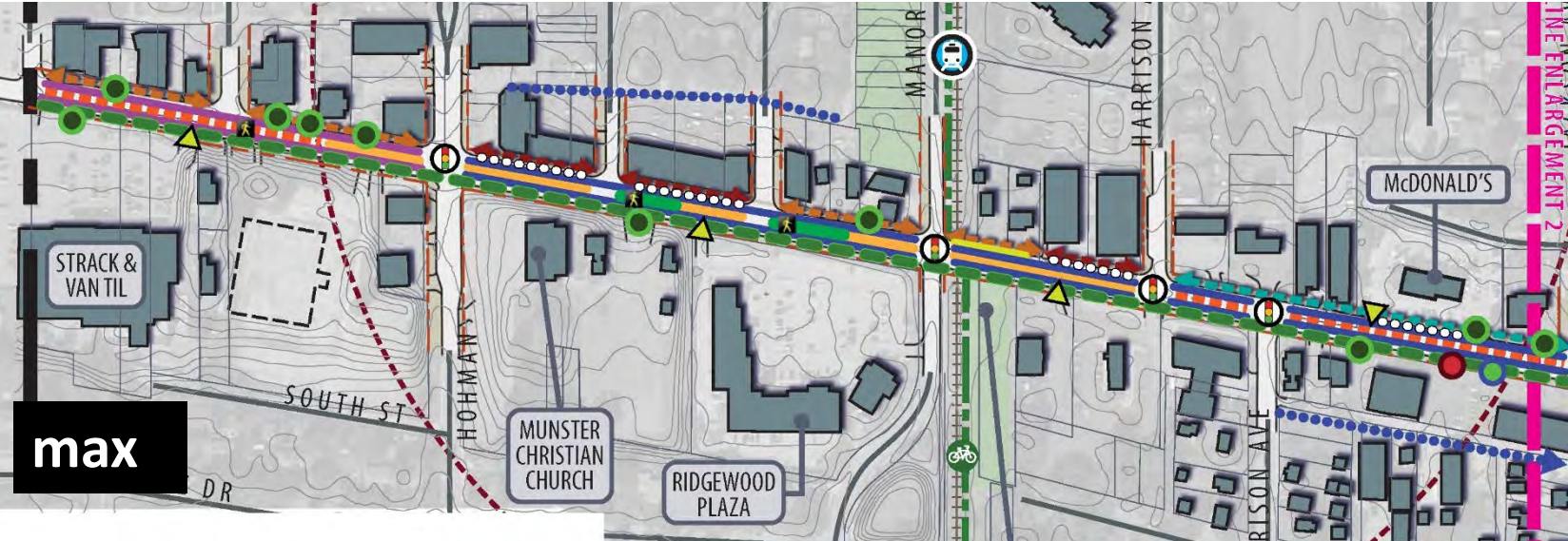
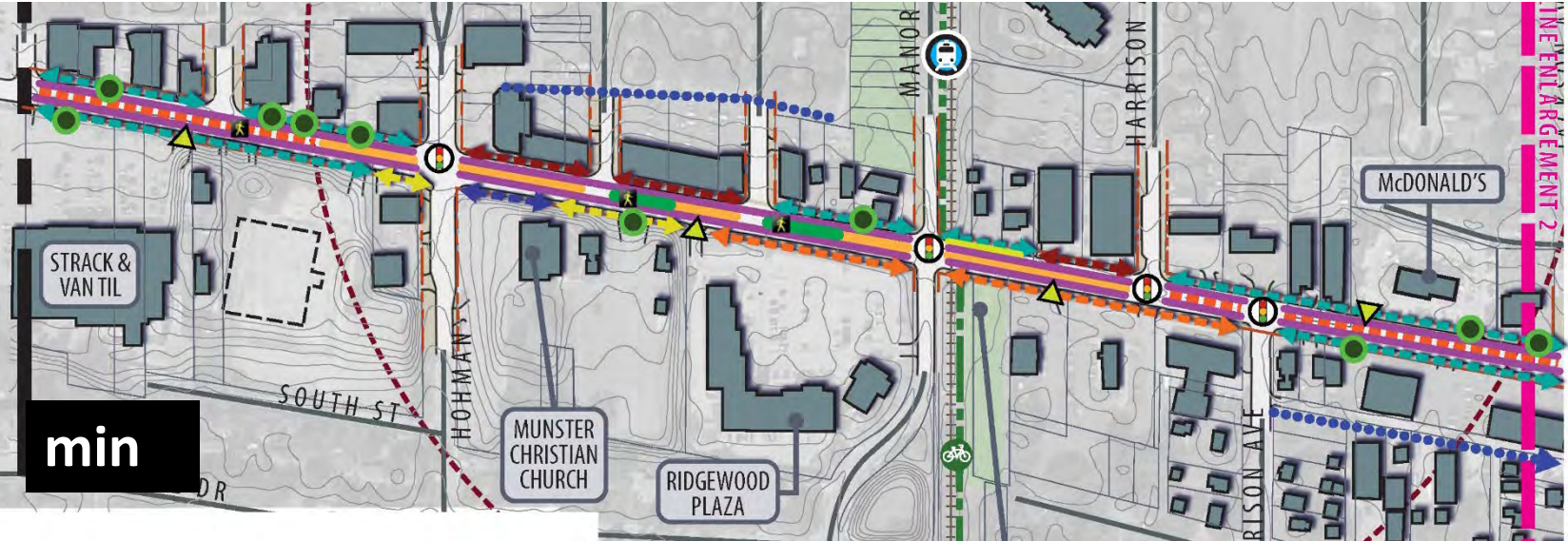
Enhanced
crosswalk striping

Improved traffic signal enhancements include black poles and mast arms,
enhanced pedestrian signalization and timing

Accessible curb ramps with detectable warnings



CONCEPT PLAN PRESENTATION | Min vs Max - west



ROADWAY

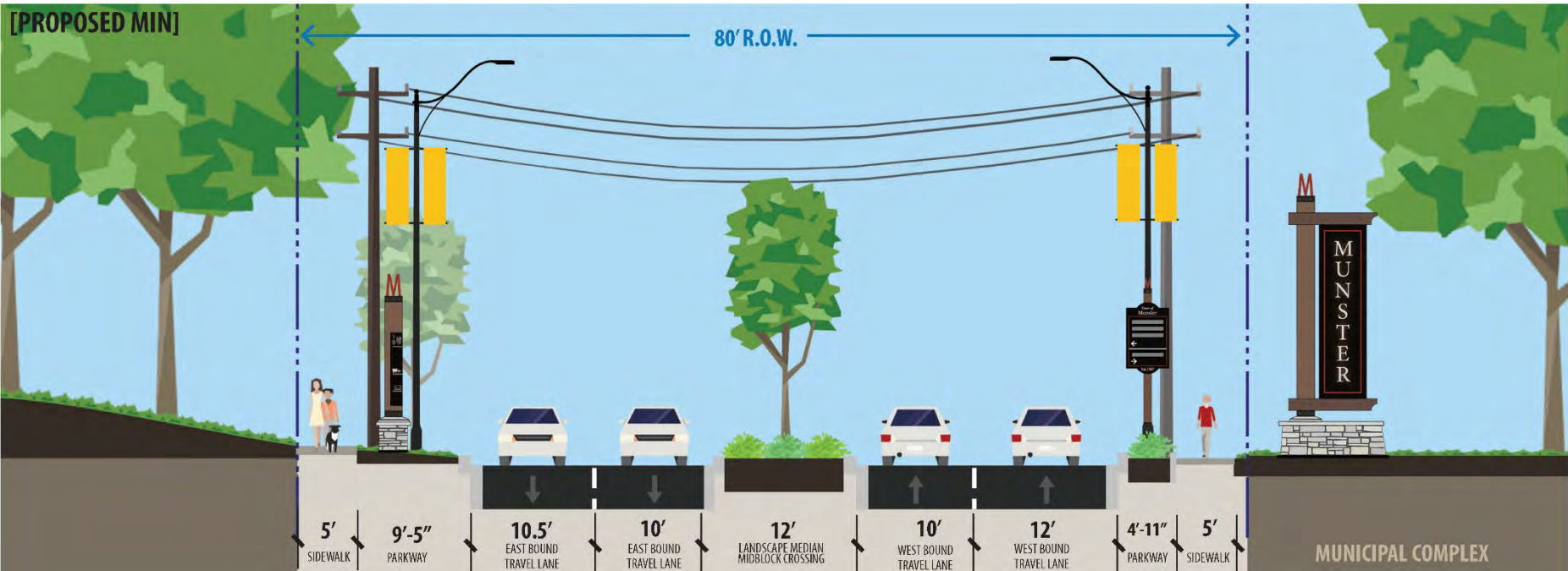
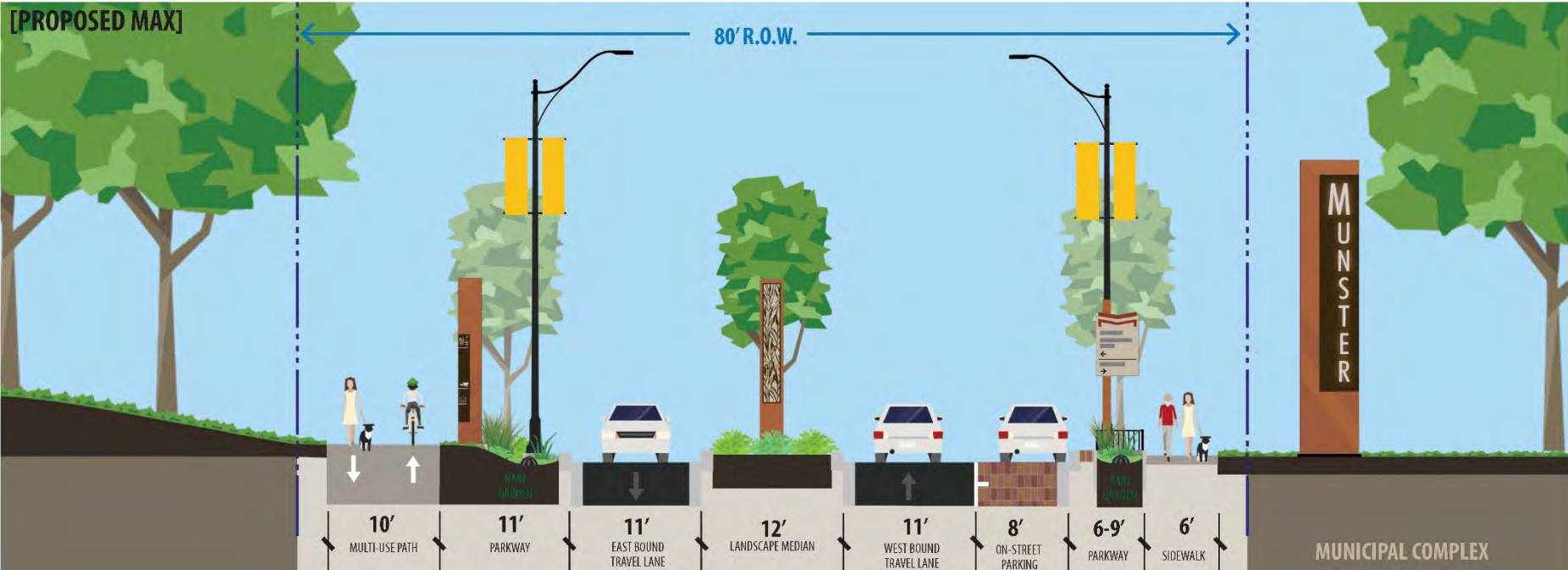
- (2) TRAVEL LANES
- (1) TRAVEL LANE
- 2-WAY LEFT TURN LANE
- DEDICATED LEFT TURN LANE
- DEDICATED RIGHT TURN LANE
- LANDSCAPE MEDIAN
- ON-STREET PARKING
- MID-BLOCK CROSSING
- RIGHT IN/RIGHT OUT
- MODIFIED CURB-CUT
- CLOSED CURB-CUT
- NEW CURB-CUT

RIGHT OF WAY TO CURB

- DOWNTOWN STREETScape
(WIDE SIDEWALKS 11'-16' WIDTH, TREES IN GRATES/PLANTERS, DECORATIVE PAVING)
- 6' SIDEWALKS W/ LANDSCAPE PARKWAY
- 10' to 12' SIDEWALK
- 7'-6" to 8'-6" SIDEWALK
- 5'-6" to 6' SIDEWALK
- 10' MULTI-USE PATH (PED/BICYCLE)

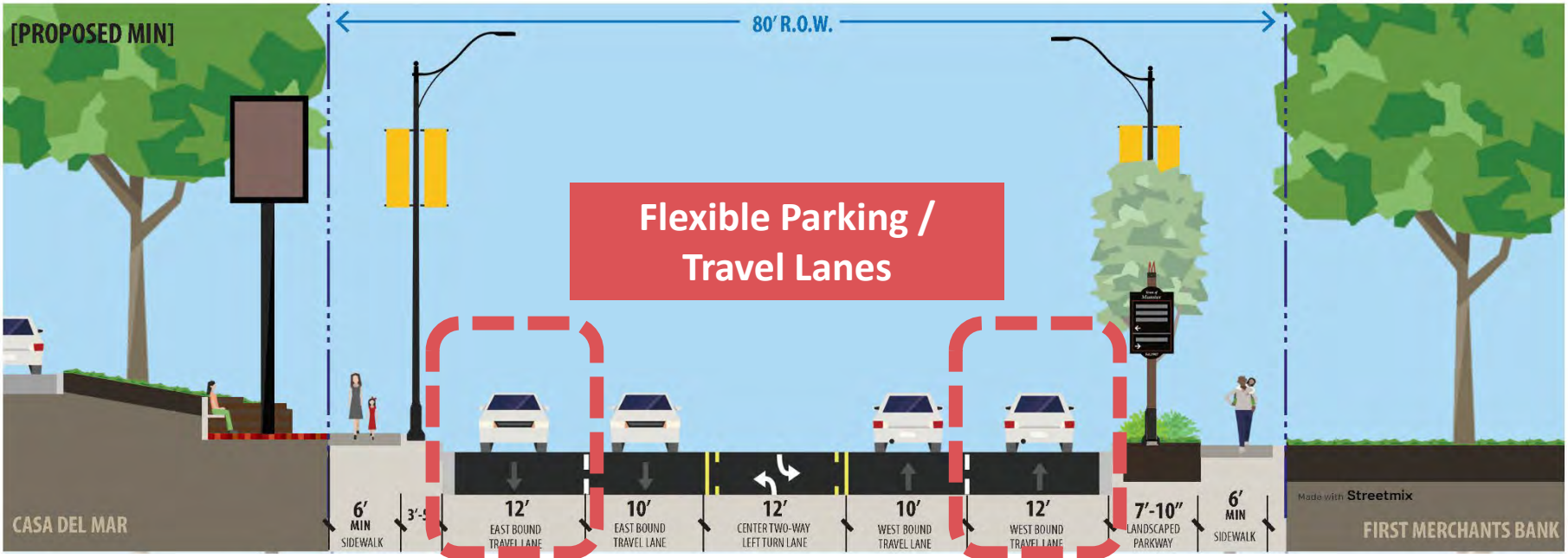
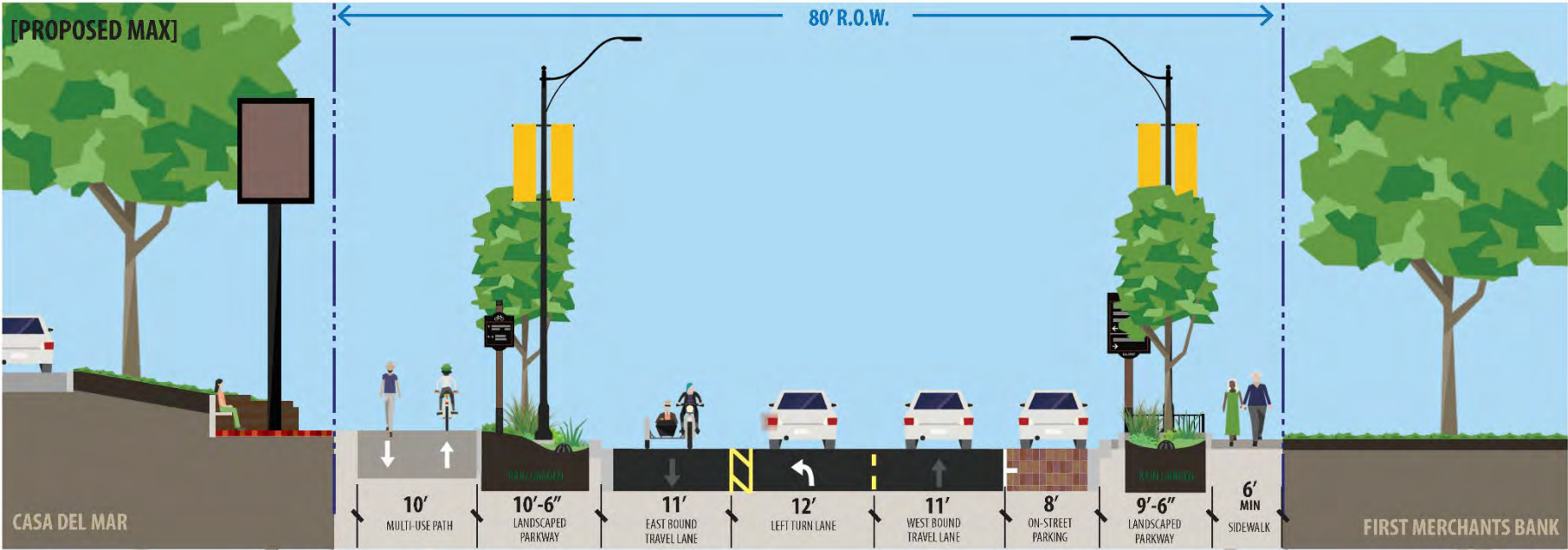
Ridge Road Sections

East of
Tapper Ave
(Town Hall)



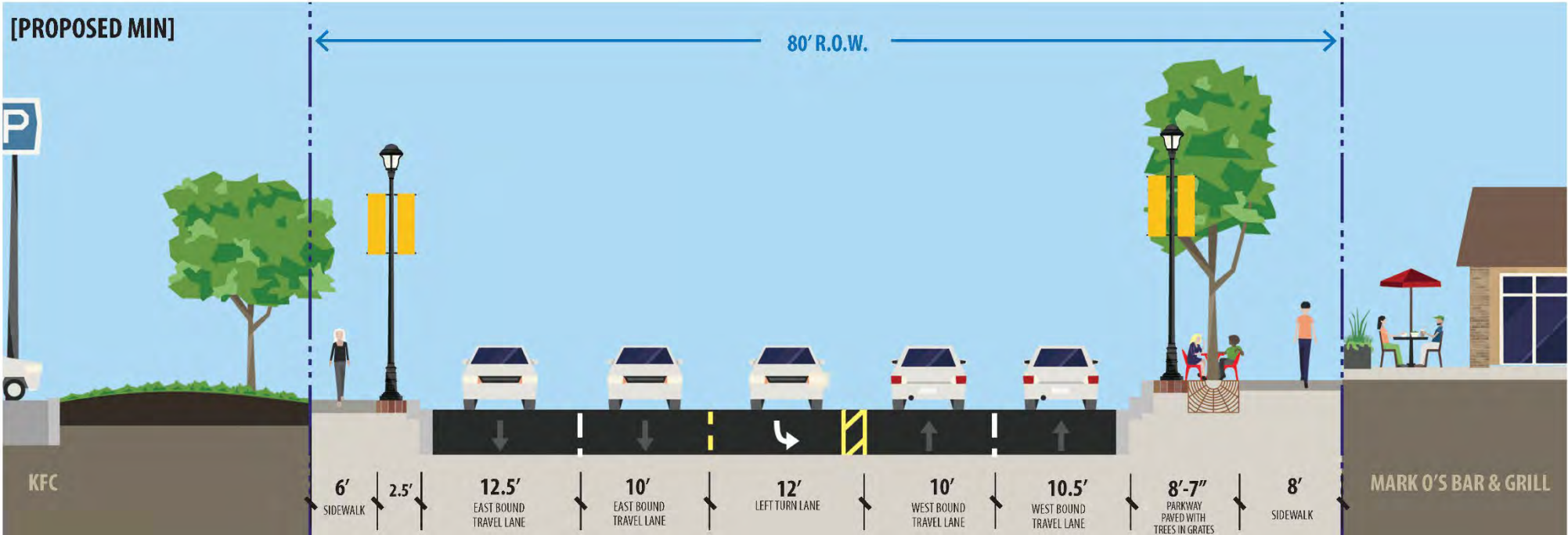
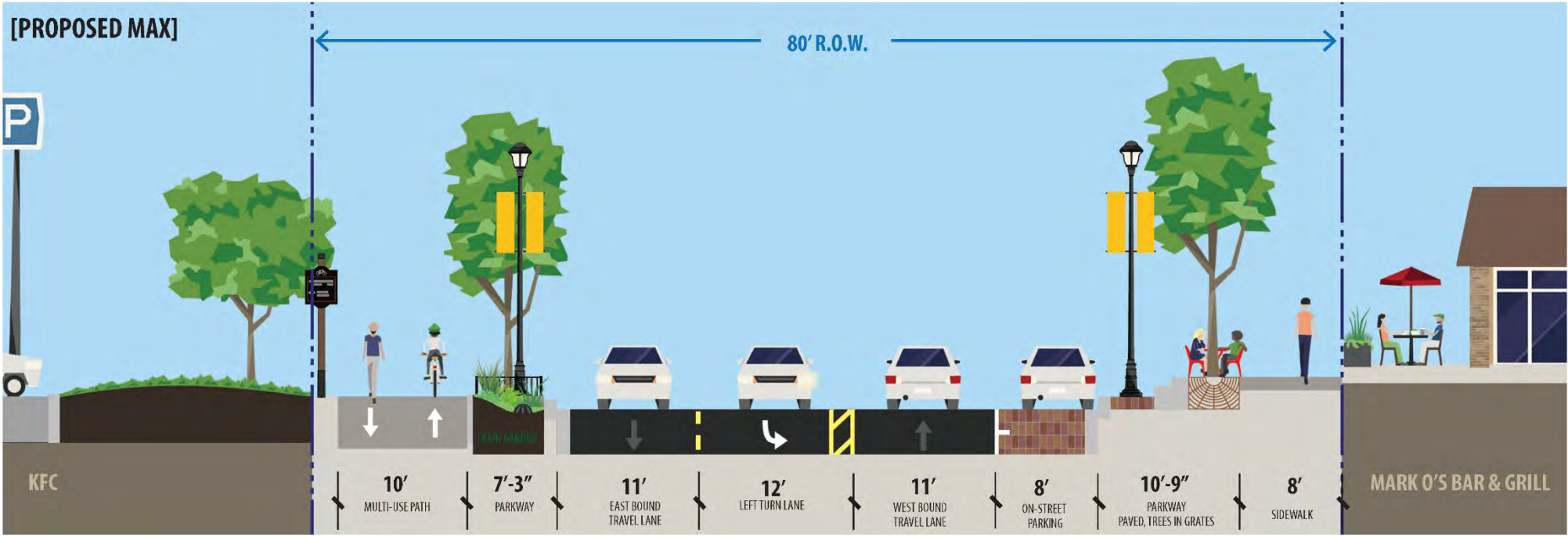
Ridge Road Sections

West of Calumet Ave



Ridge Road Sections

West of Harrison Ave (west)



CONCEPT PLAN PRESENTATION | Photovisualizations



Formalized parking with curb bump outs

Mural (requires coordination with property owner)

Decorative / painted pavement and access to power for fests and events

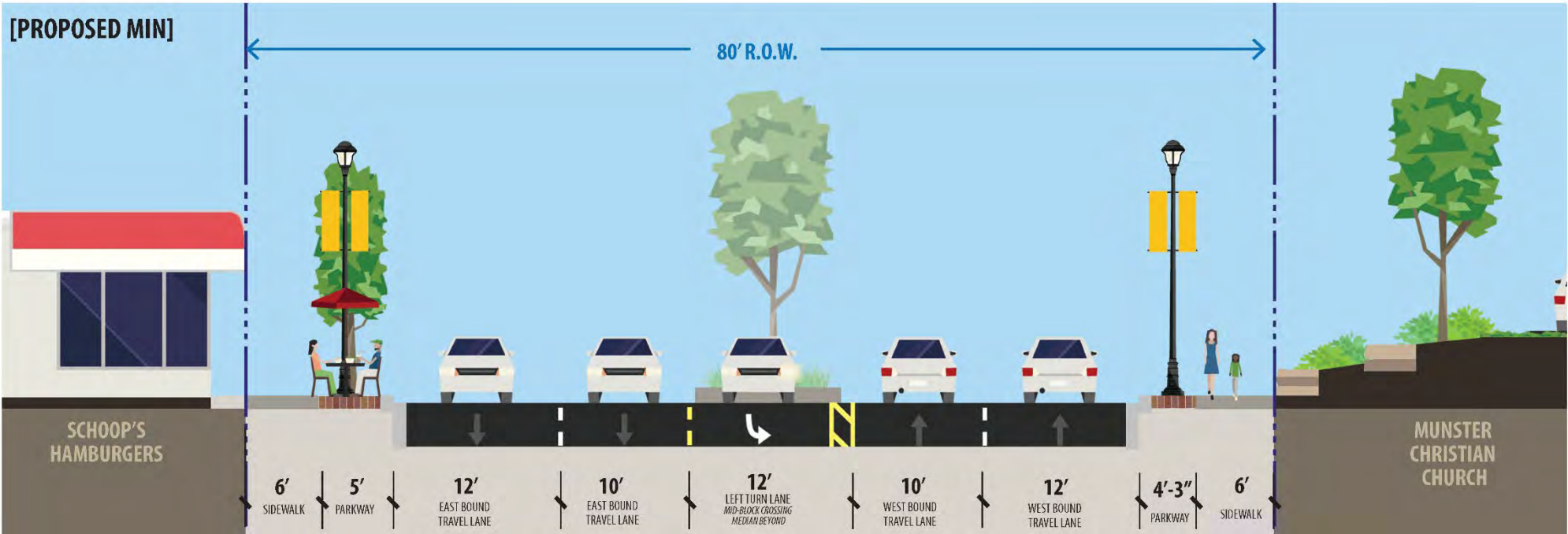
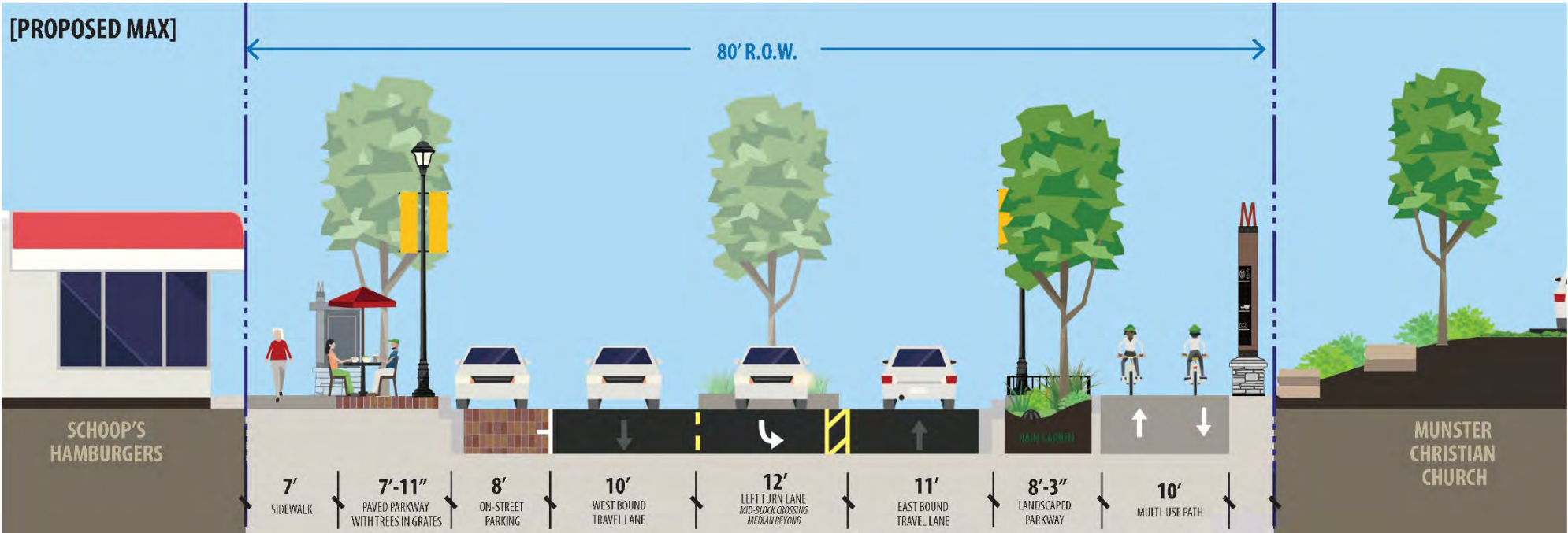


Streetscape enhancements



Ridge Road Sections

East of Hohman Ave
(west of Meadow Lane)



CONCEPT PLAN PRESENTATION | Enlargements



CONCEPT PLAN PRESENTATION | Enlargements



CONCEPT PLAN PRESENTATION | Photovisualizations

Rail crossing improvements (overhead + gates)



Streetscape improvements



PILOT PROJECTS | Options



NORTH CALUMET AVE GATEWAY

- Timber railings
- Gateway sign
- Evergreen tree screening



MEADOW LANE PARKING PLAZA

- Pavement / building wall murals
- Dedicated staff for events programming
- Electrical access, movable furnishings

METRICS | IMPERVIOUS VS PERVIOUS SPACE

RIDGE ROAD			
	EXISTING	MIN	MAX
IMPERVIOUS SPACE	100%	89%	75%
PERVIOUS SPACE	0%	11%	25%

CALUMET AVENUE IMPERVIOUS VS PERVIOUS SPACE			
	EXISTING	MIN	MAX
IMPERVIOUS SPACE	100%	90%	86%
PERVIOUS SPACE	0%	10%	14%

METRICS | PARKWAY WIDTHS + TREES

RIDGE ROAD			
	EXISTING	MIN	MAX
PARKWAY WIDTH	4'-6" to 9'-2"	3'-0" to 9'-2"	5'-0" to 17'-0"
TREES	0	123	255

CALUMET AVENUE			
	EXISTING	MIN	MAX
PARKWAY WIDTH	5'-0" - 12'-0"	3'-6" - 12'-0"	3'-6" - 12'-0"
TREES	8	132	132

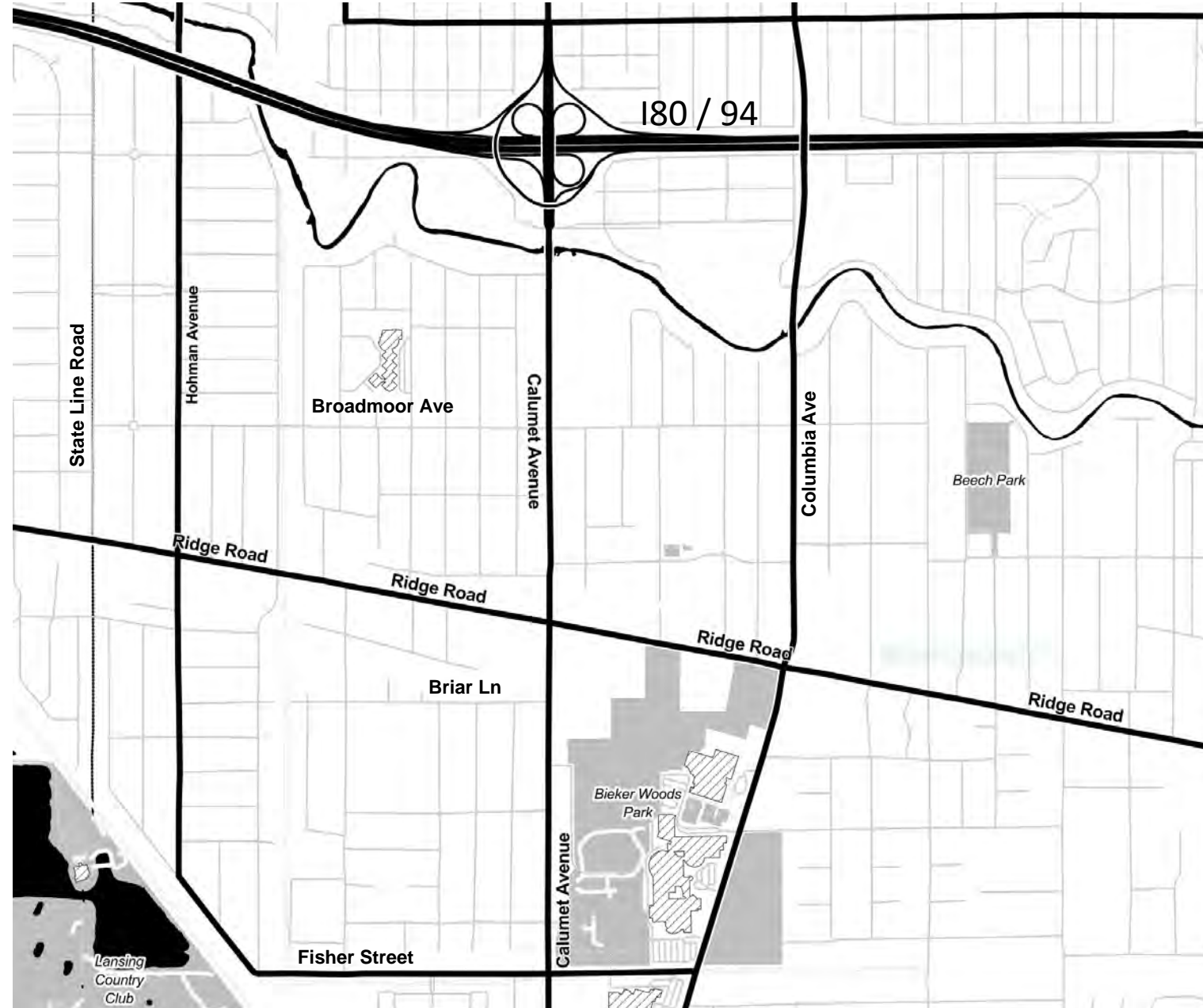
METRICS | PEDESTRIAN CROSSINGS

PEDESTRIAN CROSSING DISTANCE (TYPICAL)			
	EXISTING	MIN	MAX
Ridge Road	55-70'	55-70'	35-70'
Calumet Avenue	55-75'	55-75'	55-75'

SIDEWALK WIDTH (TYPICAL)			
	EXISTING	MIN	MAX
Ridge Road	4'	5-6'	6-8' along north side 10' multiuse path along south side
Calumet Avenue	4'	5'	5'

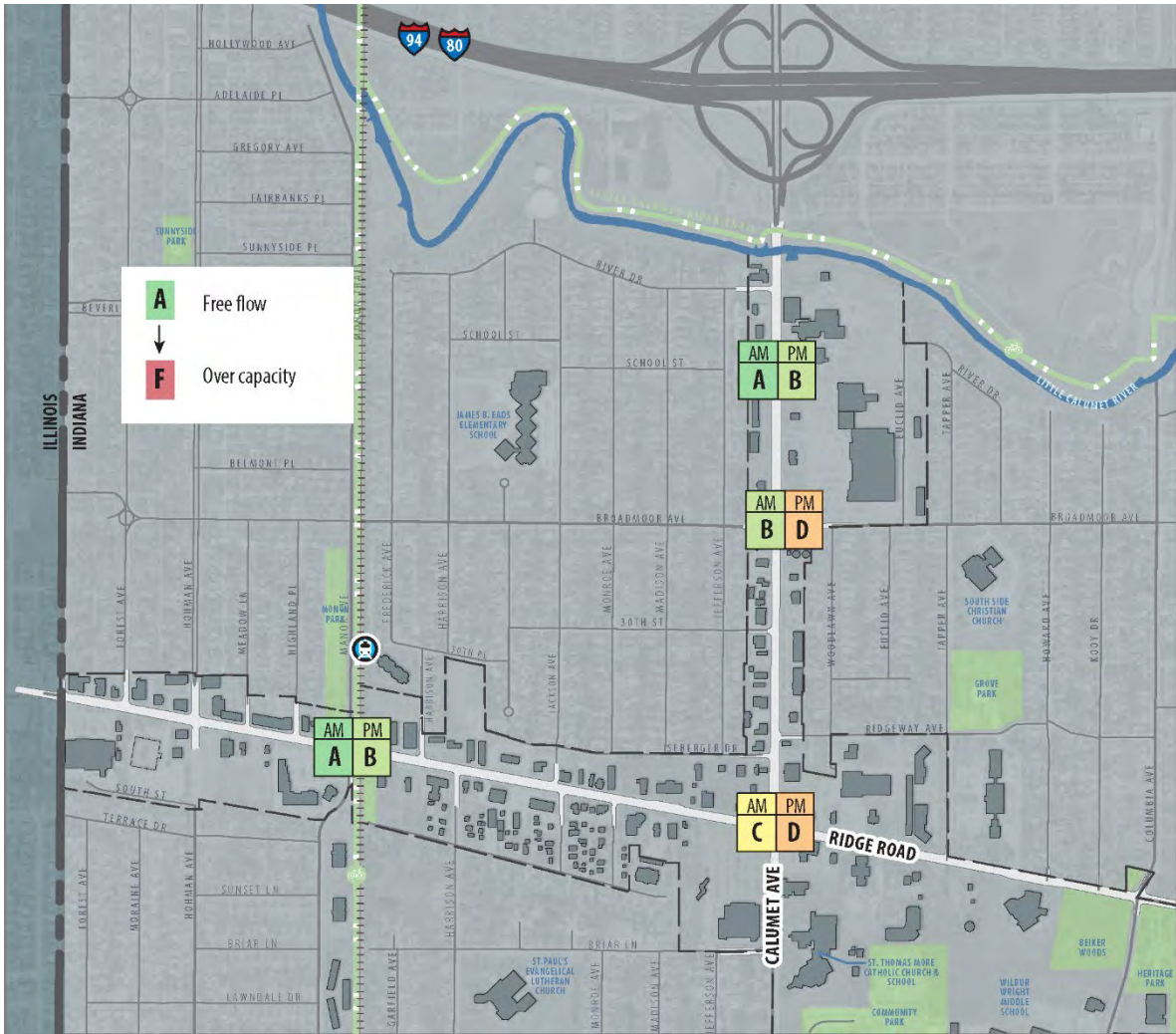
APPROACH TO FUTURE TRAFFIC ANALYSIS

- Build on 2014 conditions (Town-provided data)
- Extrapolate to 2020 based on INDOT growth trends
- Apply NIRPC projections reflecting area infrastructure improvements
- Add RDA development projections
- Further engineering study to be performed when design begins

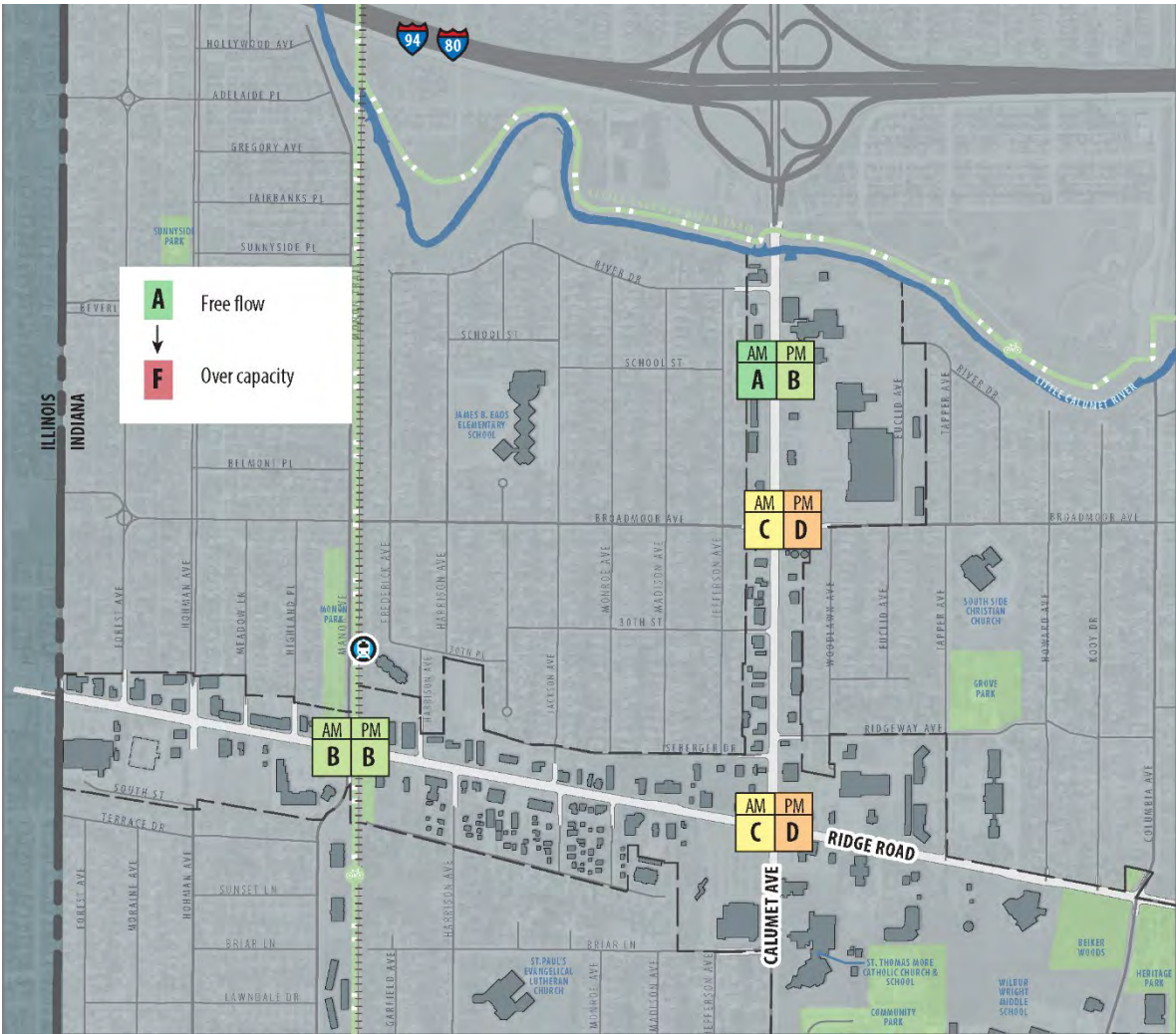


INTERSECTION LEVELS OF SERVICE

Future Min Scenario

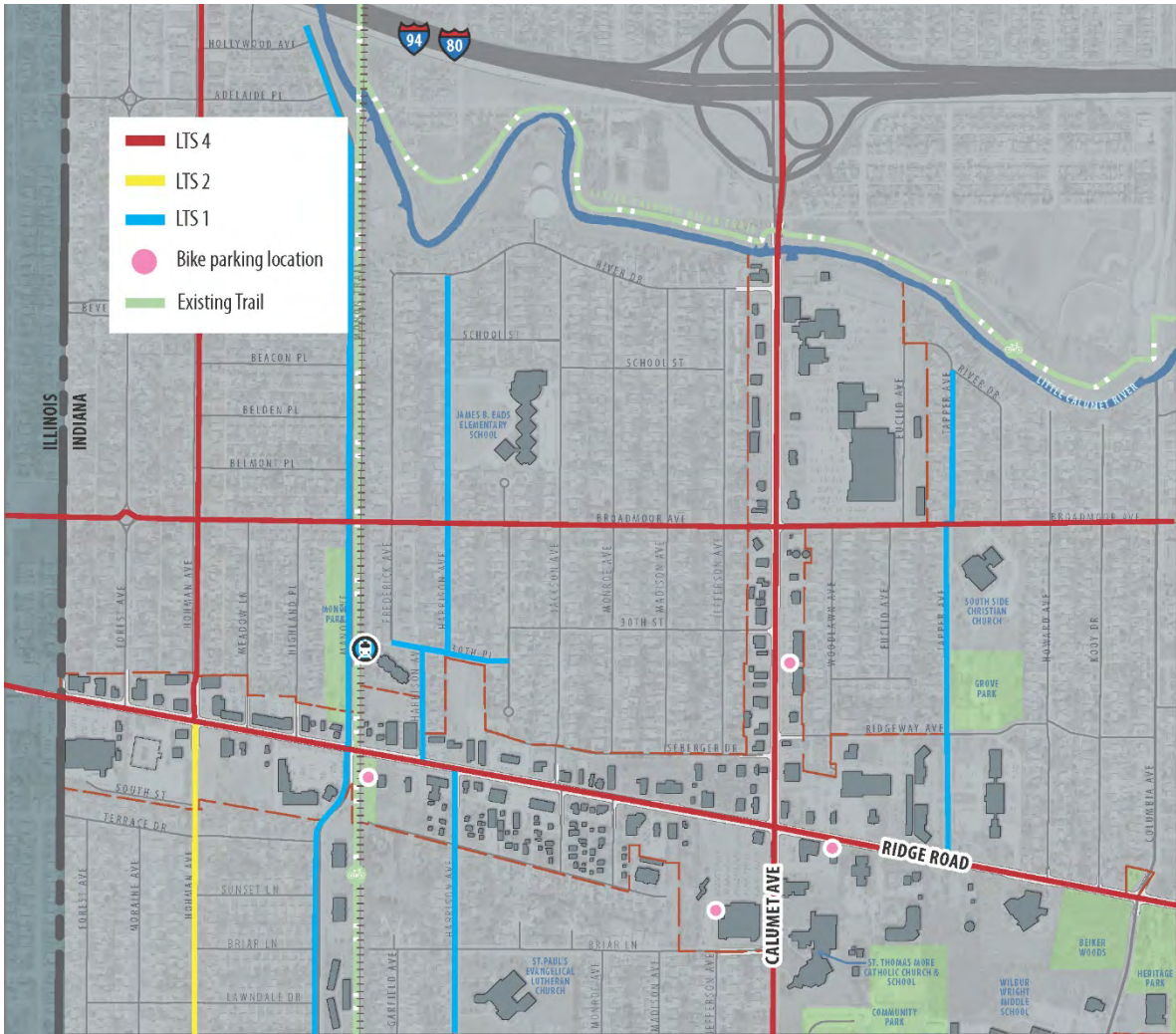


Future Max Scenario

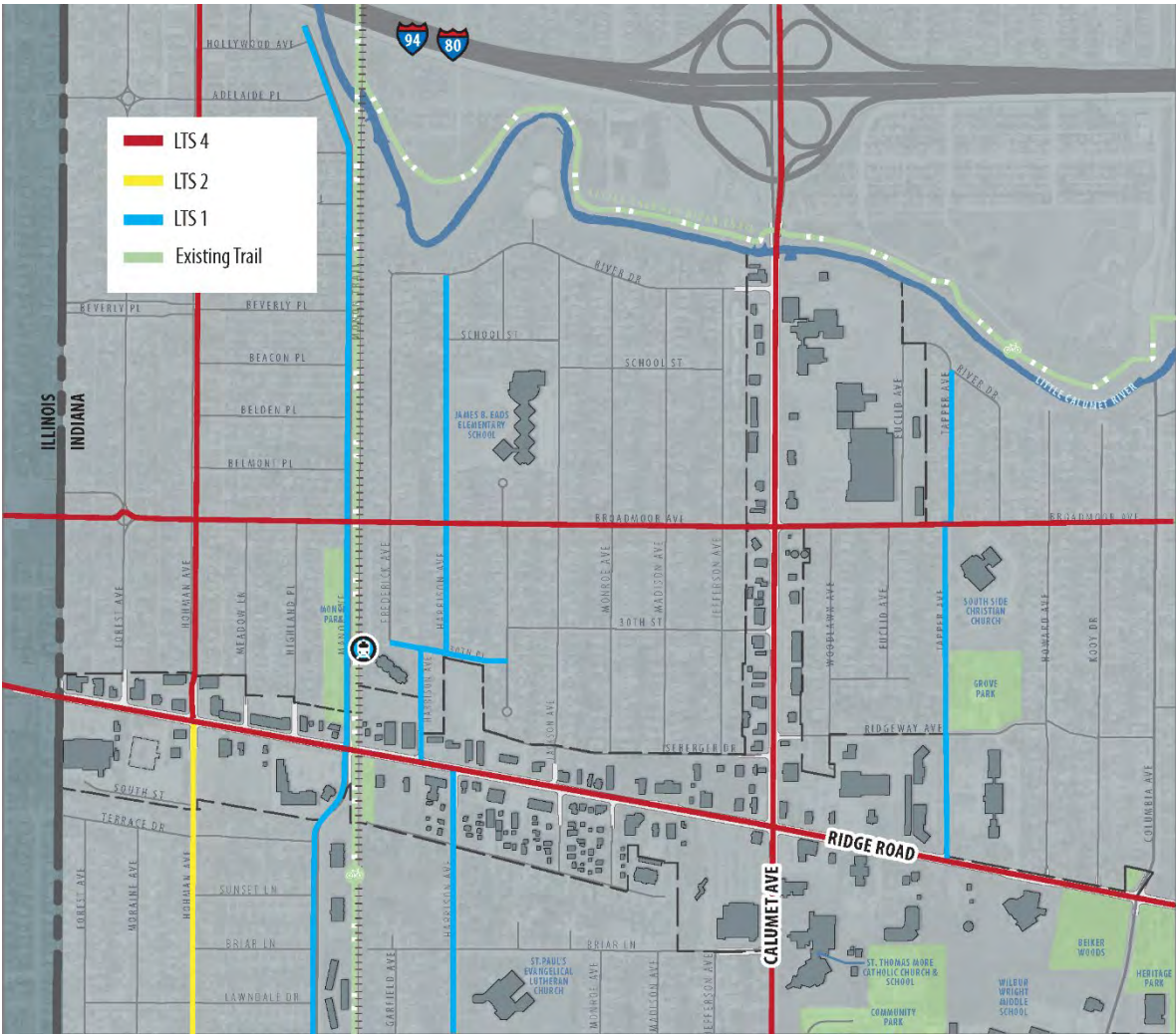


BICYCLIST LEVEL OF TRAFFIC STRESS (LTS)

Existing

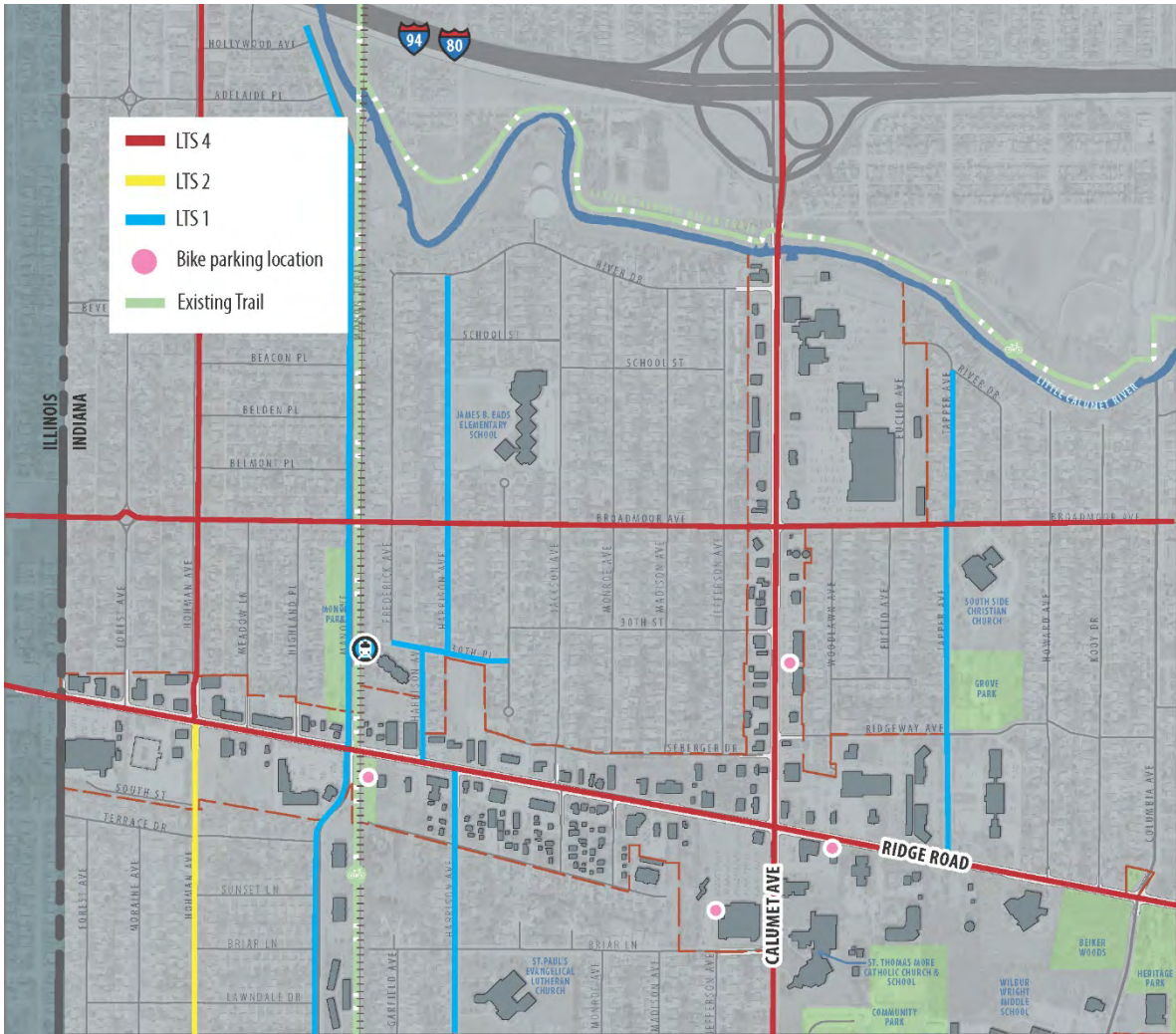


Future Min Scenario

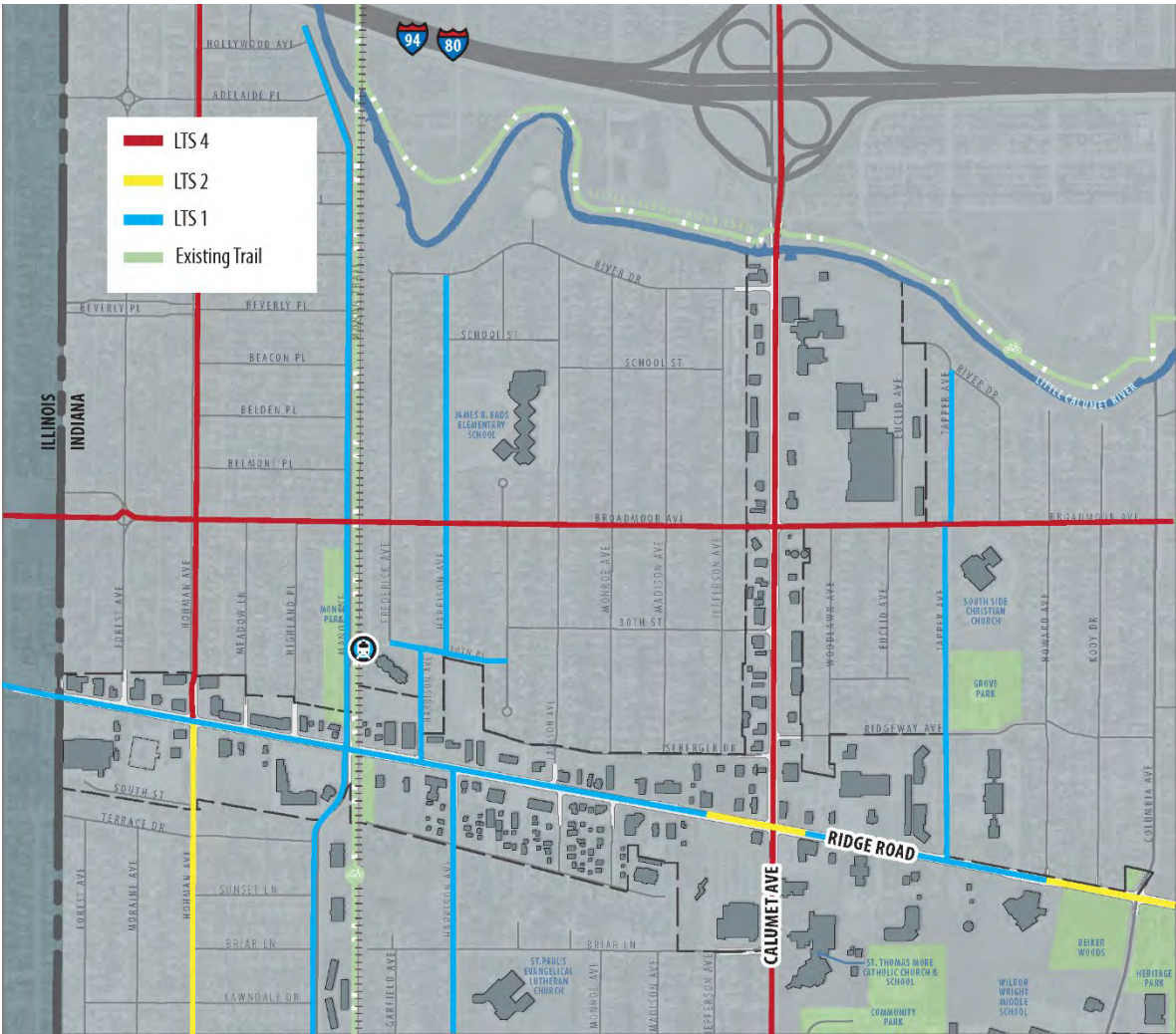


BICYCLIST LEVEL OF TRAFFIC STRESS (LTS)

Existing



Future Max Scenario



METRICS | TRAFFIC

DISTANCE BETWEEN PEDESTRIAN CROSSINGS			
	EXISTING	MIN	MAX
Ridge Road	300'-2,300'	275'-1,200'	275'-1,200'
Calumet Avenue	860'-1,820'	390'-1,340'	390'-800'

NUMBER OF CURB CUTS			
	EXISTING	MIN	MAX
Ridge Road	59 total (~9 per 1,000 ft) <ul style="list-style-type: none">58 full access1 limited access	56 total (~8 per 1,000 ft) <ul style="list-style-type: none">50 full access6 limited access	56 total (~8 per 1,000 ft) <ul style="list-style-type: none">44 full access12 limited access
Calumet Avenue	56 total (~13 per 1,000 ft) <ul style="list-style-type: none">56 full access0 limited access	54 (~12 per 1,000 ft) <ul style="list-style-type: none">54 full access0 limited access	55 total (~13 per 1,000 ft) <ul style="list-style-type: none">36 full access19 limited access

METRICS | TRAFFIC

NUMBER OF PARKING SPACES			
	EXISTING	MIN	MAX
Ridge Road	0	0 during peak hours, 58 during off-peak hours	58
<i>* Additional on-street parking at Highland Pl, Meadow Ln and Forest Ave. Approx 10 spaces per street = 30 spaces</i>			
Calumet Avenue	0	0	0
<i>* Additional on-street parking at Seberger Dr (2) 30th St (4) = 6 spaces</i>			

METRICS | TRAFFIC

VEHICLE DELAY (BY INTERSECTION)			
	EXISTING	MIN	MAX
Ridge/Calumet	30.9 AM	31.3 AM	32.8 AM
	41.1 PM	45.0 PM	51.6 PM
Ridge/Manor	12.8 AM	8.9 AM	11.9 AM
	18.0 PM	10.8 PM	19.9 PM
Calumet/Broadmoor	24.5 AM	16.8 AM	24.8 AM
	42.5 PM	38.8 PM	43.8 PM
VEHICLE QUEUES			
	EXISTING	MIN	MAX
Ridge Road	126-237' AM	93-229' AM	105-227' AM
	240-434' PM	83-270' PM	194-544' PM
Calumet Avenue	80-593' AM	330-706' AM	318-657' AM
	115-572' PM	453-851' PM	446-837' PM

AGENCY OUTREACH + CONSIDERATIONS

NICTD	<ul style="list-style-type: none">• Station area plans at 30%• Anticipated construction completion by 2025
NRPC	<ul style="list-style-type: none">• Support complete streets approach• Funding opportunities for streetscape: <i>Next Level Trails; Transportation Enhancement Funds (INDOT); Green Streets Funds</i>• NRPC could fund a Transportation Master Plan
Little Calumet River Basin Development	<ul style="list-style-type: none">• Funding opportunities for streetscape: <i>The Tree Grant; Plantings associated with north Calumet gateway.</i>
Indiana DNR	<ul style="list-style-type: none">• Potential funding programs: <i>FEMA BRIC (Building Resilient Infrastructure and Communities); GLRI (Great Lakes Restoration Initiative); DNR Small Grants (wayfinding, green infrastructure)</i>
NIPSCO	<ul style="list-style-type: none">• Calumet Ave is a transmission corridor• Ridge Rd is mostly distribution• Opportunities to consolidate aerial crossings at Ridge Rd and to consolidate utilities as part of the station development.

NEXT STEPS + QUESTIONS?

1. Community Poll #2
2. Public meeting, *mid December*
3. Next Committee Meeting: Draft Streetscape Plan, *after the new year*

INPUT ACTIVITY

Log on to: MENTI.COM