



# **CALUMET AVENUE & RIDGE ROAD STREETScape**

## **TOWN OF MUNSTER**

**COMMITTEE MEETING #1 | JULY 15, 2020 | MUNSTER TOWN HALL**



**Sam  
Schwartz**

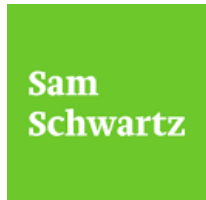
# INTRODUCTIONS + PROJECT TEAM



## **Teska Associates | Community Planning + Landscape Architecture**

Jodi Mariano, PLA, Principal Landscape Architect

Heather Faivre, PLA, Associate Landscape Architect



## **Sam Schwartz Consulting | Transportation + Traffic Planning**

Sara Disney Haufe, PE, PTOE, Associate + Deputy Director of Traffic Engineering

# PROJECT GOAL

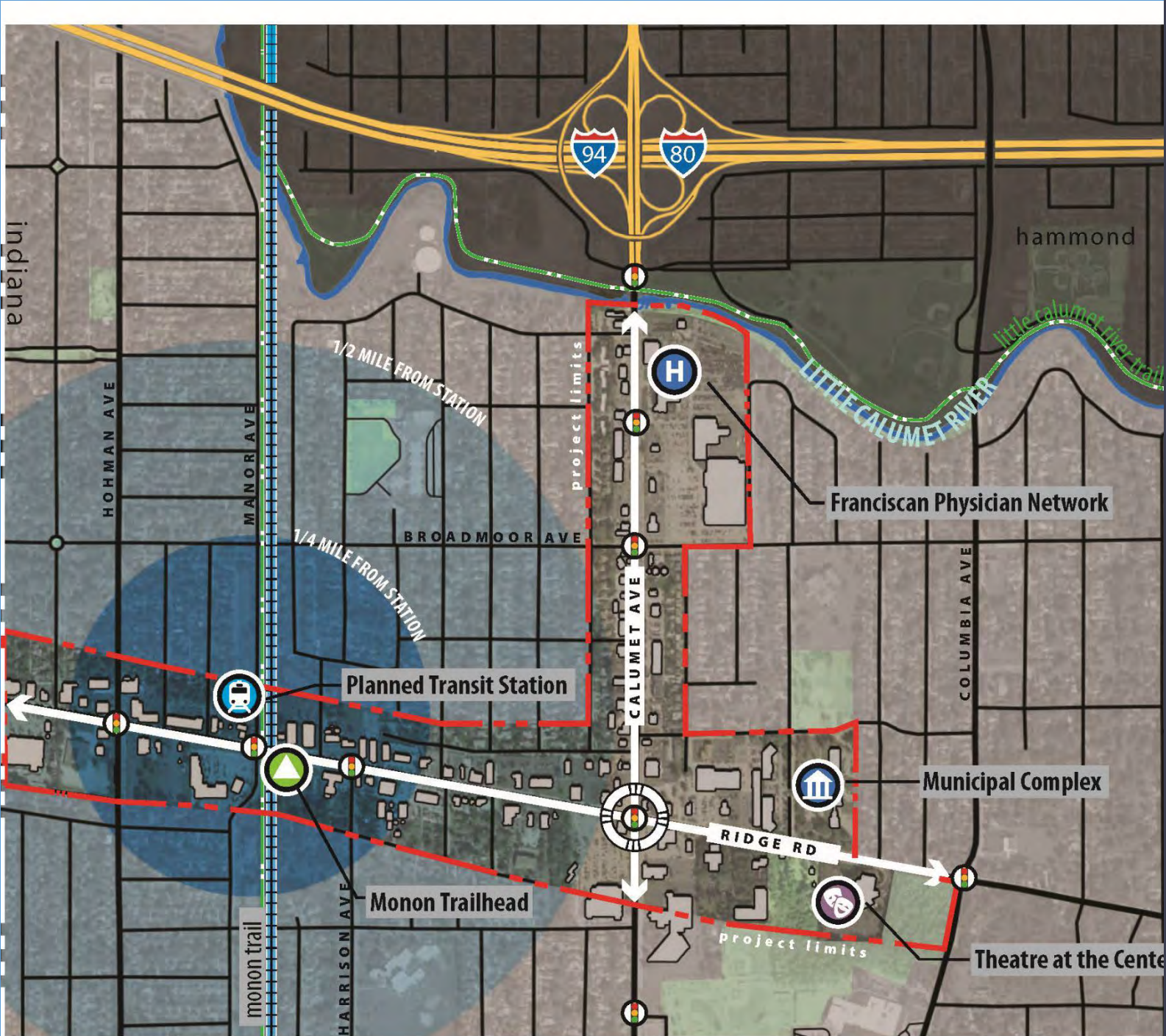
The goal of this project is to develop **a more welcoming environment for walking, biking, to reinforce a sense of place in our community, and to enhance the ability to absorb stormwater and reduce flooding.**

# KEY THEMES

- A **safe and comfortable** pedestrian environment
- A functional streetscape providing **stormwater benefits**
- A consistent and **beautiful public realm**
- A **sense of arrival** and identity
- A multimodal system that balances **access and mobility**

# FUNDING FOR THE STREETSCAPE PLAN

National Oceanic and Atmospheric Administration + the Indiana Department of Natural Resources Lake Michigan Coastal Program. **“The Coastal Grant”**



# STUDY AREA

## **Phase 1**

**Outreach +  
Analysis**

**MAY – JULY 2020**

**Analysis / project website  
Staff meeting**

**Committee meeting #1**

**Neighborhood poll #1**

**Stakeholder interviews**

**Farmers market pop up**

## **Phase 2**

**Concepts +  
Alternatives**

**AUG – NOV 2020**

**Concept development**

**Committee meeting #2**

**Neighborhood poll #2**

**Agency meetings**

**Public open house**

## **Phase 3**

**Final Plan +  
Adoption**

**DEC 2020 – MARCH 2021**

**Final plan + pilot project**

**Committee meetings #3-4**

**Public meeting**

**Town Council meeting**

# OUTREACH

---

- Project website:  
[munster-streetscape.org](https://munster-streetscape.org)
- Stakeholder interviews
- (2) Neighborhood polls
- (3) Public meetings / events
- Town and Agency coordination



## CALUMET-RIDGE STREETSCAPE PLAN

RENEW · RECONNECT · REIMAGINE

### Public Realm

"A consistent and beautiful "public realm"... there needs to be improved safety for bikes/walkers. The look-n-feel should represent our area in terms of prairie and the dunes... Studies show that bikers/walkers are more likely to shop than motorists."

### Sense of Arrival

"Potentially a big water feature (that can use stormwater run off) look at the Village of Rosemont signage at the corner of Higgins Rd. and North River Rd. Themes that are uniquely Munster: Prairie, Dunes, Art (Art Center)."

### Bike Lanes + Sidewalks

"More bike lanes that our kids can ride on around town. Add sidewalks on 45th extension going to Westlakes & south of centennial part going to dunkin/cvs corner."

# PAST PLANNING STUDIES

**Westlake Corridor Transit-Oriented Development (ongoing)**

**Livable Munster Character Based Code (2019)**

**Munster Parks and Recreation Plan (2018)**

**Comprehensive Plan (2010)**

**The Appearance Plan for Munster, Indiana (1986)**



*Establish a new direction from an auto-oriented community to a community of walkable, mixed use centers, connected by complete streets. (excerpt from Comprehensive Plan)*

*Calumet and Ridge is defined as a Main Street Crossroads. Recommendations include consolidating curb cuts, incorporating landscaped medians at Calumet and redeveloping new buildings close to the street to promote a more walkable environment. (excerpt from Comprehensive Plan)*





# EXISTING CONDITIONS – CALUMET AVENUE



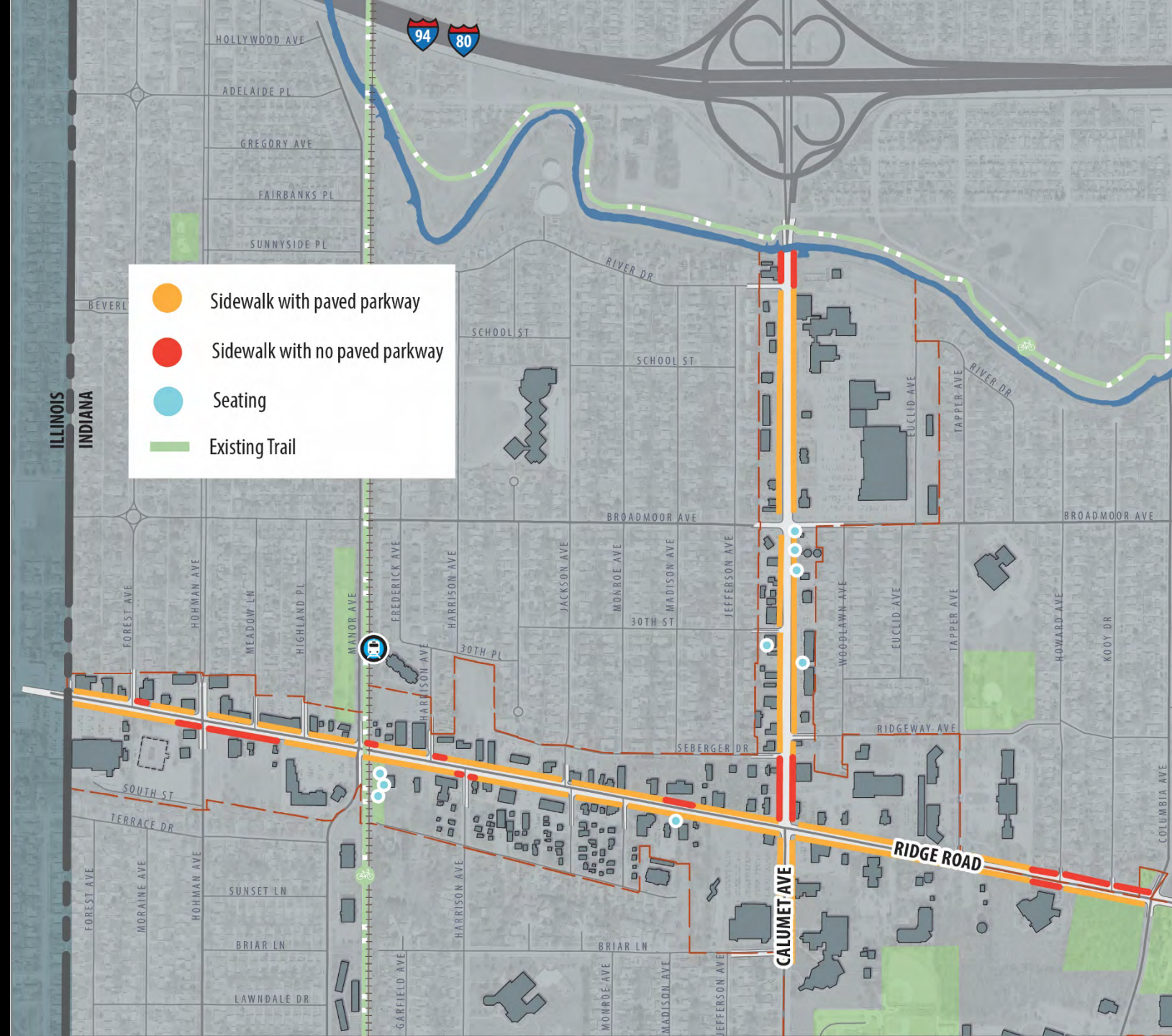
# TRANSPORTATION LEVEL OF SERVICE

- All intersections operate acceptably (2014 conditions)
- Daily traffic trends:
  - Ridge Road down by 10-21% since 2012
  - Calumet Ave up 13% since 2009
- Evidence of cut-through traffic on Seberger Drive



# PEDESTRIAN FACILITIES

- Sidewalk widths of 4 to 6 feet
- Buffers present, but often slanted
- Utility poles create pinch points
- Sparse seating, connections between sidewalk network and land uses



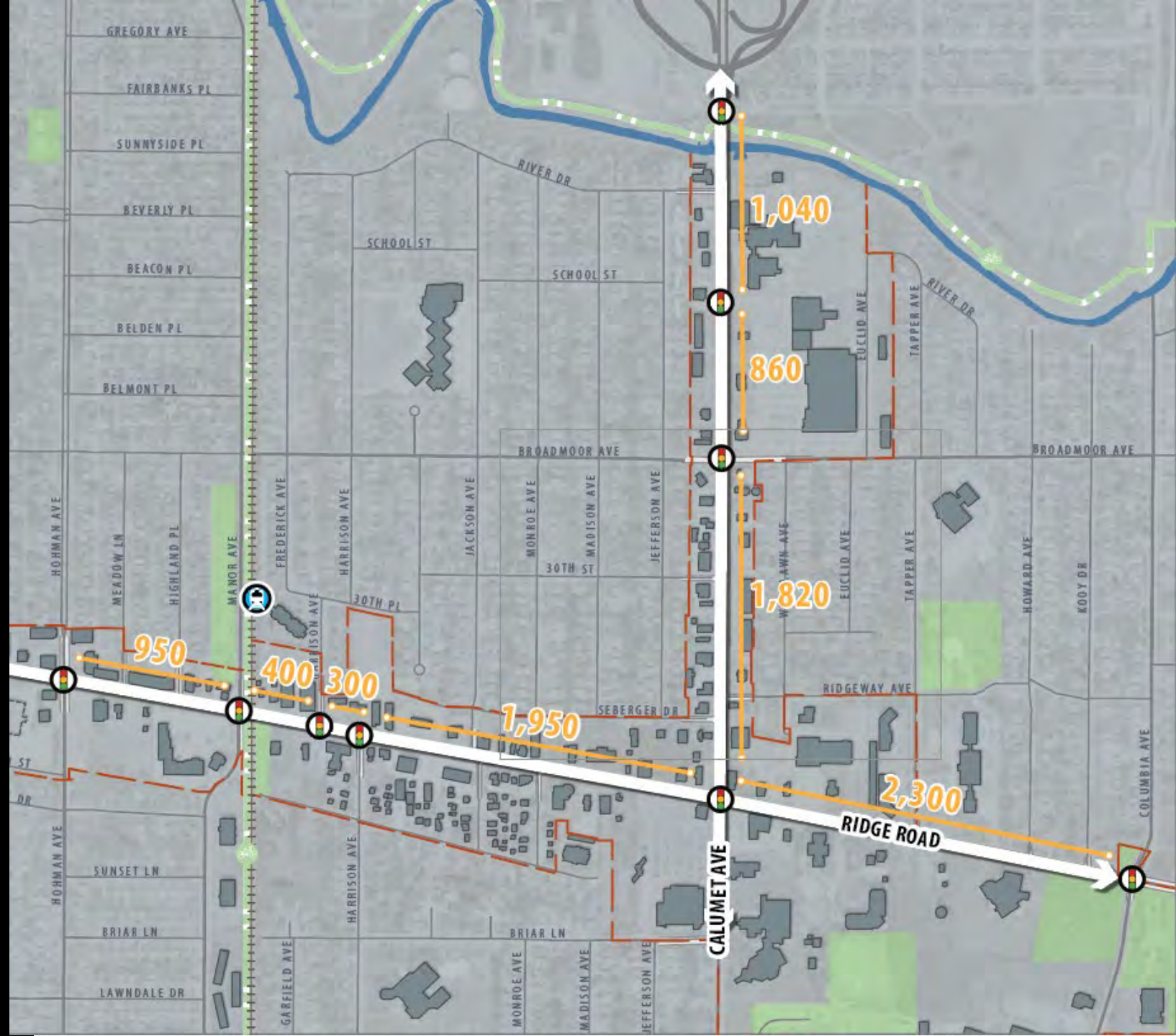
# CURB CUT FREQUENCY

- Create conflict points between vehicles & active transportation users
- Important to continue good access management practices



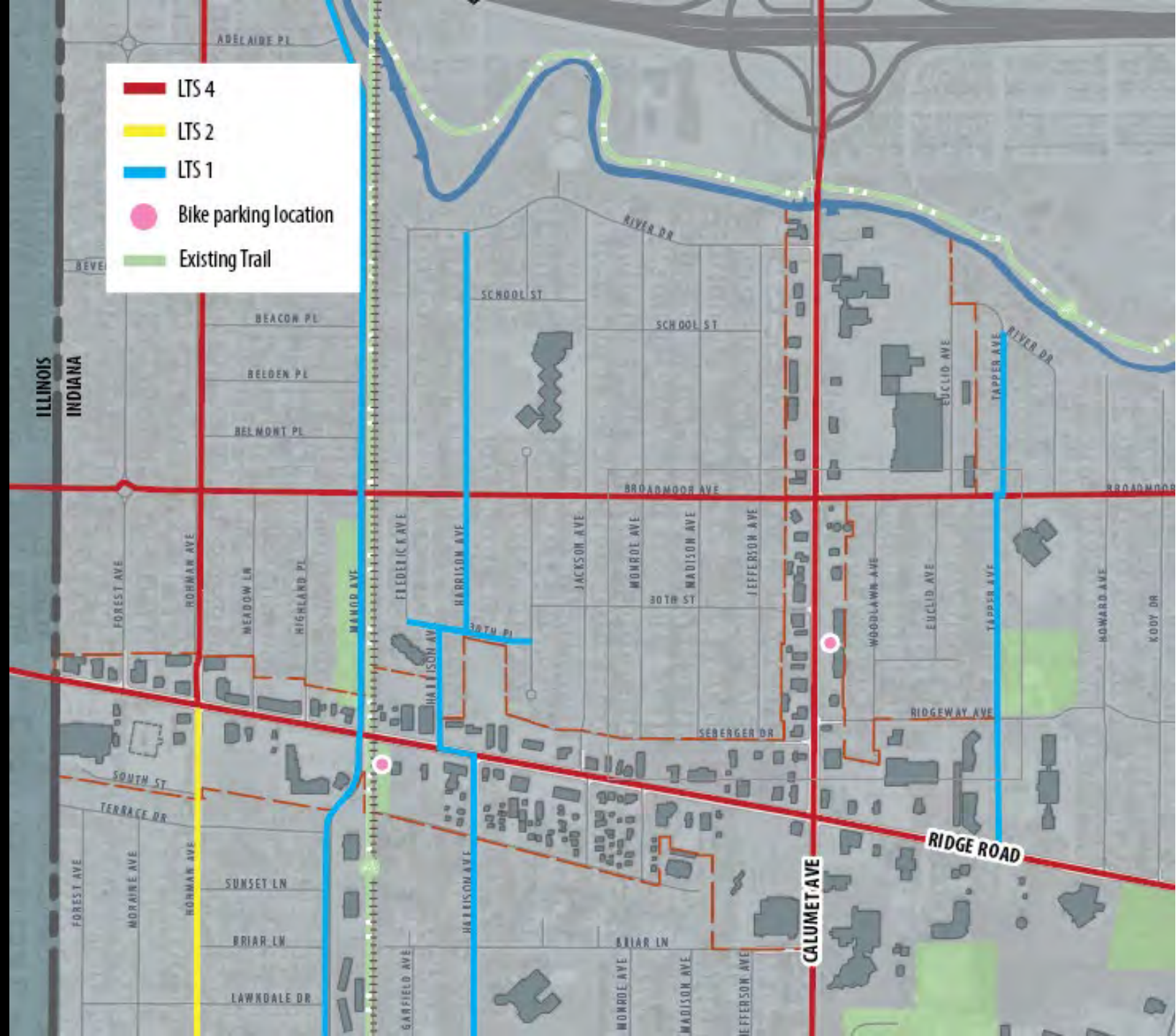
# DISTANCE BETWEEN PEDESTRIAN CROSSINGS

- Target distance 200-600 feet
- Crossings available at signalized intersections only
- Enhance pedestrian comfort with adjusted signal timings, high-visibility crosswalks



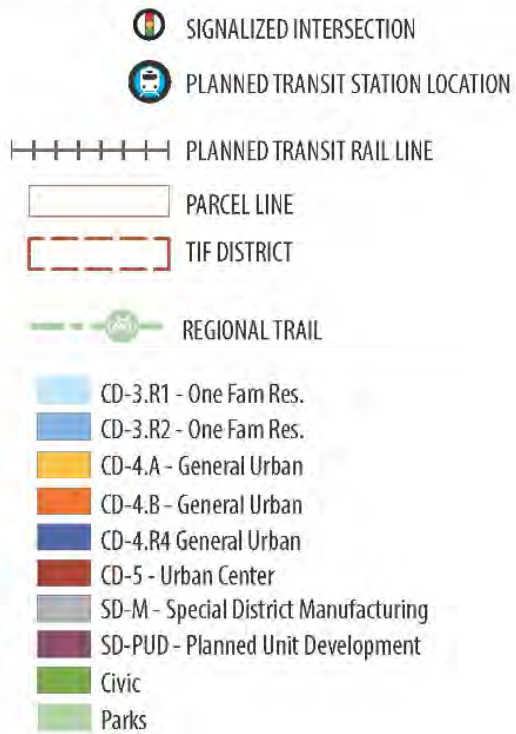
# BICYCLE FACILITIES + LEVEL OF TRAFFIC STRESS

- Opportunity to extend trail network into study area
- High Level of Traffic Stress (LTS) on many streets
- Lack of facilities & parking disincentivizes stopping on corridors

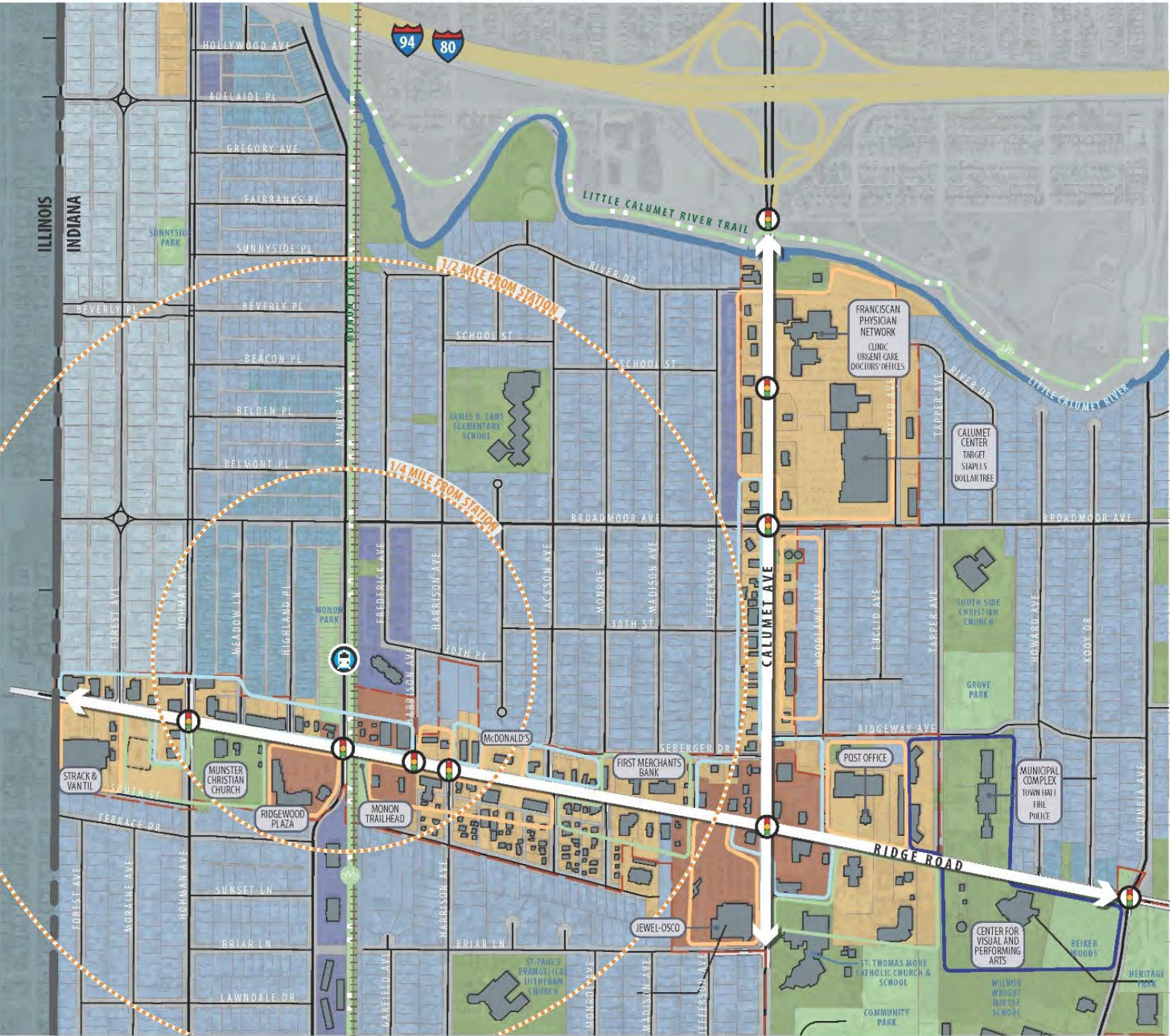


# ZONING + FRONTAGE TYPES

## LEGEND










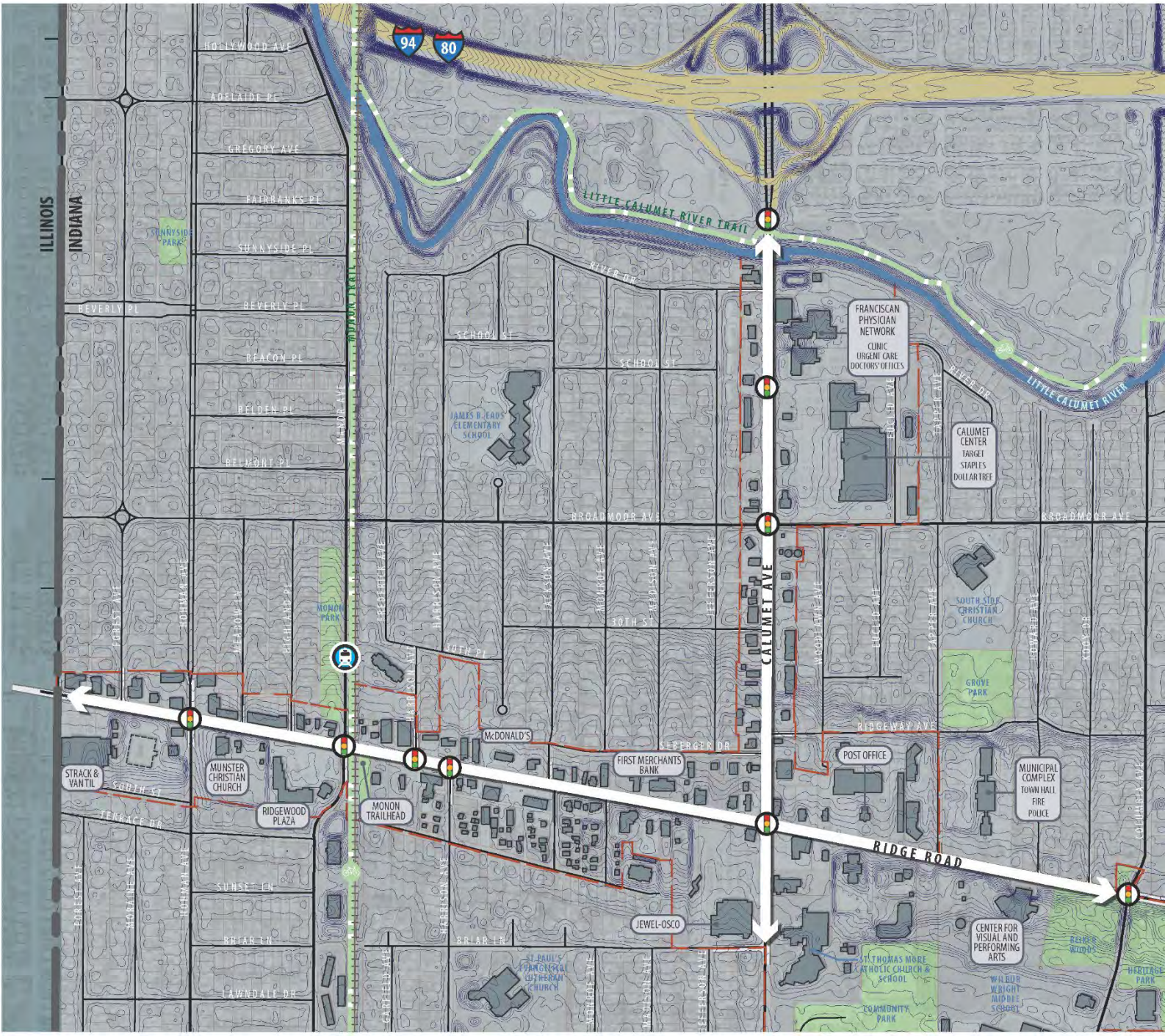
## TYPICAL SITE LAYOUTS



# TOPOGRAPHY


## LEGEND


-  SIGNALIZED INTERSECTION
-  PLANNED TRANSIT STATION LOCATION
-  PLANNED TRANSIT RAIL LINE
-  PARCEL LINE
-  TIF DISTRICT
-  REGIONAL TRAIL
-  CONTOUR LINE





# ENLARGEMENT AREA 1


LEGEND


 SIGNALIZED INTERSECTION


 PLANNED TRANSIT STATION LOCATION

 PLANNED TRANSIT RAIL LINE


 PARCEL LINE


 RIGHT OF WAY


 CONTOUR LINE


 REGIONAL TRAIL

ROADWAY


 2-WAY LEFT TURN LANE


 DEDICATED LEFT TURN LANE


 DEDICATED RIGHT TURN LANE

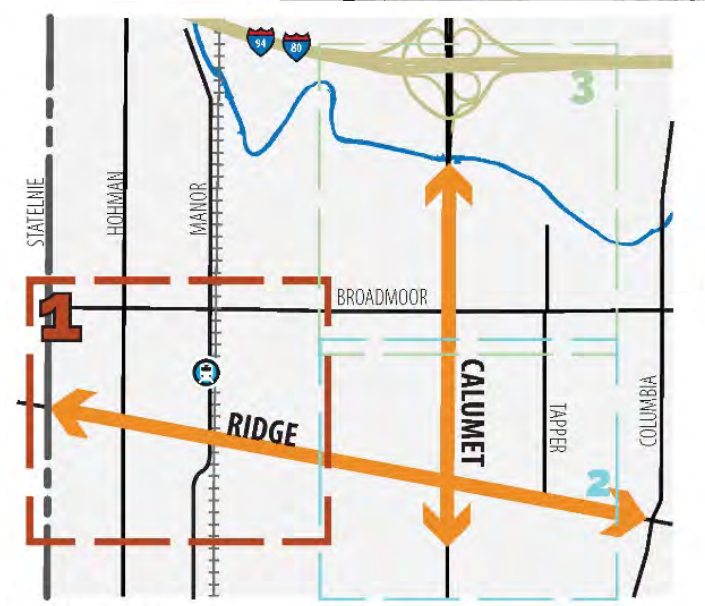
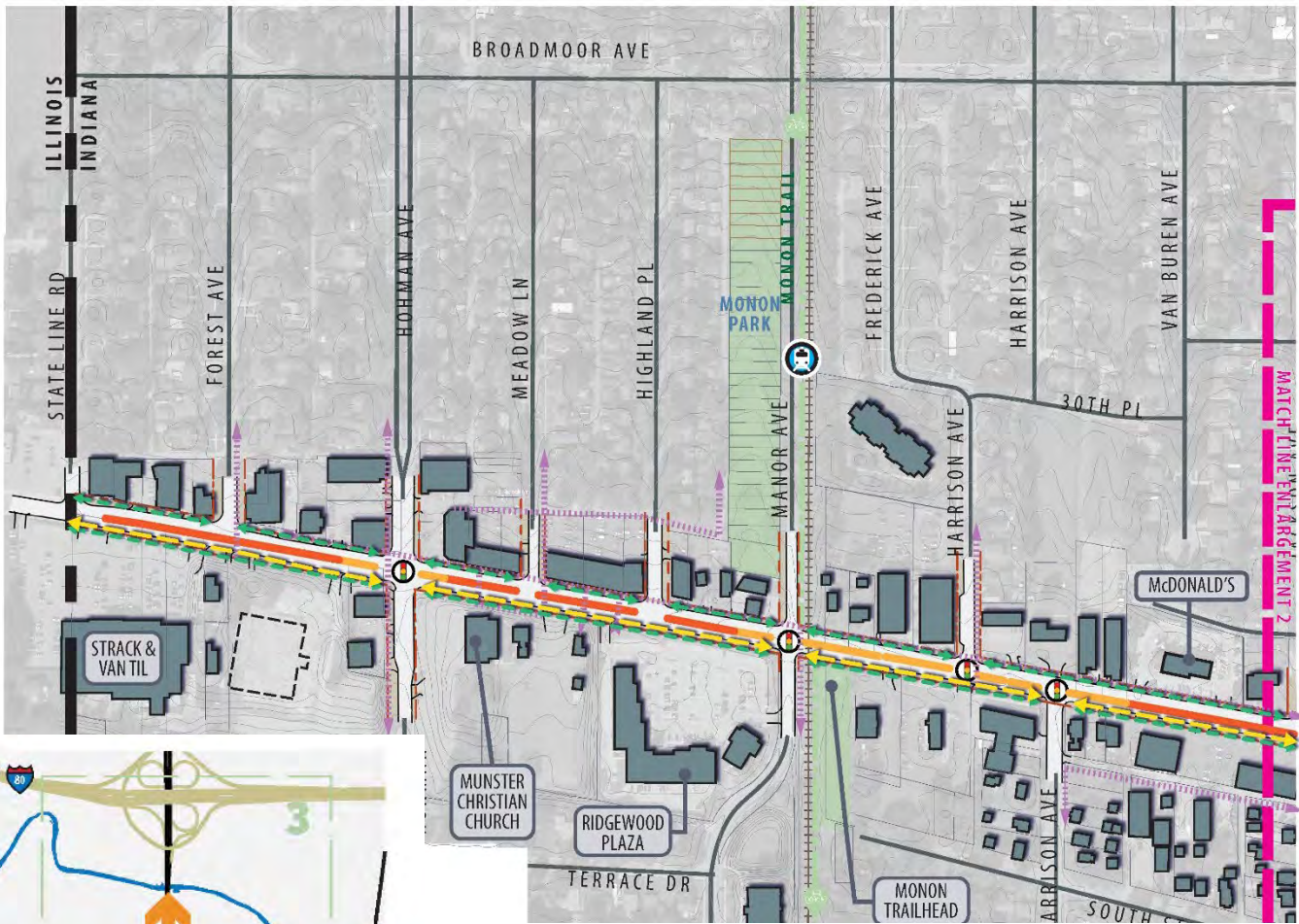
 PAINTED MEDIAN

RIGHT OF WAY

 ROADWAY LIGHTING

 PEDESTRIAN LIGHTING - DECORATIVE POLES















 OVERHEAD POWER LINES

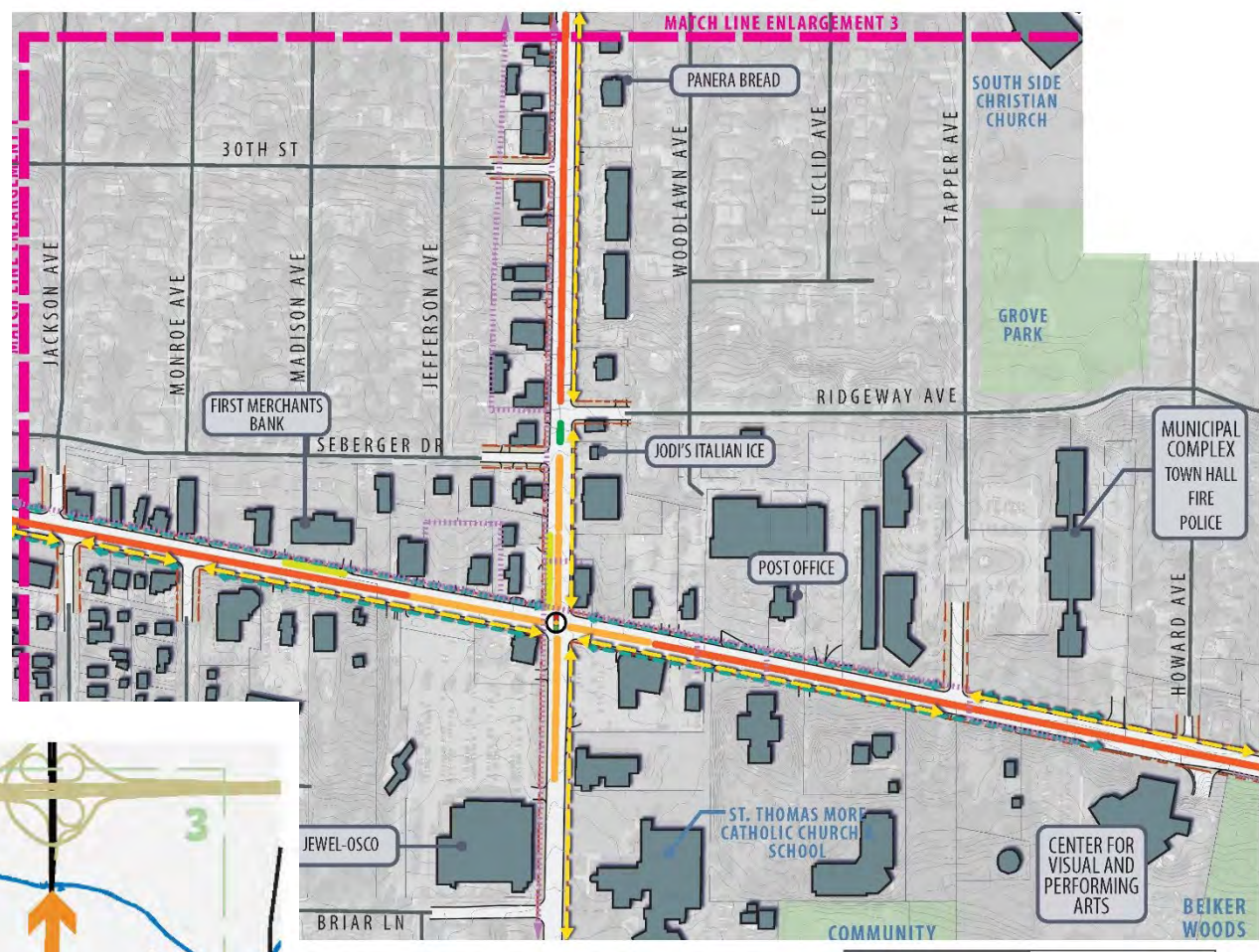


KEY MAP

# ENLARGEMENT AREA 2


## LEGEND


-  SIGNALIZED INTERSECTION
-  PLANNED TRANSIT STATION LOCATION
-  PLANNED TRANSIT RAIL LINE
-  PARCEL LINE
-  RIGHT OF WAY
-  CONTOUR LINE
-  REGIONAL TRAIL
- ROADWAY**
  -  2-WAY LEFT TURN LANE
  -  DEDICATED LEFT TURN LANE
  -  DEDICATED RIGHT TURN LANE
  -  PAINTED MEDIAN
- RIGHT OF WAY**
  -  ROADWAY LIGHTING
  -  PEDESTRIAN LIGHTING - DECORATIVE POLES
  -  OVERHEAD POWER LINES





# ENLARGEMENT AREA 3


**LEGEND**


 SIGNALIZED INTERSECTION


 PLANNED TRANSIT STATION LOCATION

 PLANNED TRANSIT RAIL LINE


 PARCEL LINE


 RIGHT OF WAY


 CONTOUR LINE


 REGIONAL TRAIL

**ROADWAY**


 2-WAY LEFT TURN LANE


 DEDICATED LEFT TURN LANE


 DEDICATED RIGHT TURN LANE

 PAINTED MEDIAN

**RIGHT OF WAY**

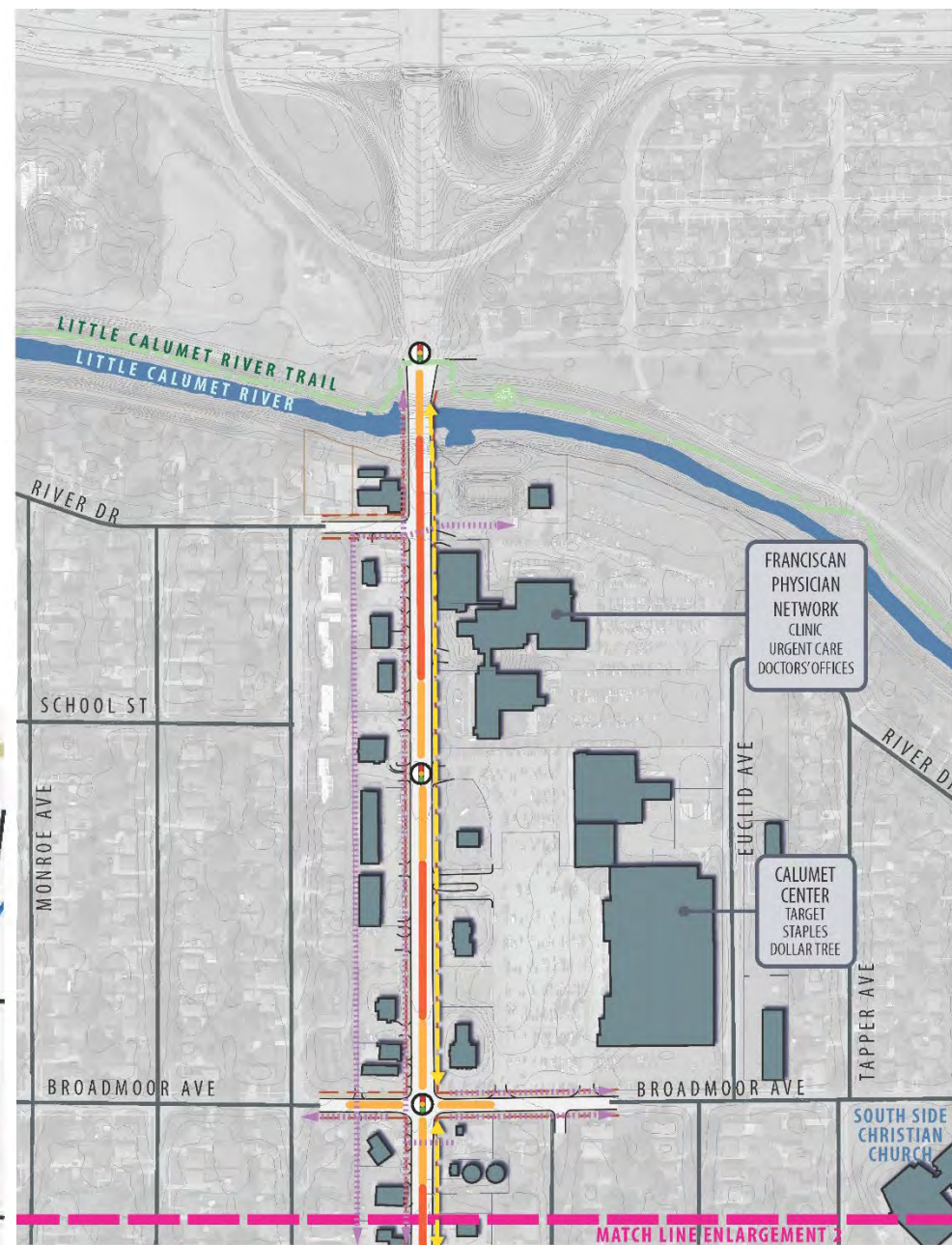
 ROADWAY LIGHTING

 PEDESTRIAN LIGHTING - DECORATIVE POLES

 OVERHEAD POWER LINES



KEY MAP





Designated bike lane + mixed use development



Landscaped median



Landscaped median + mid block crossing

# Connectivity + Landscaped Thoroughfares

---



On-street bike lanes + streetscape amenities

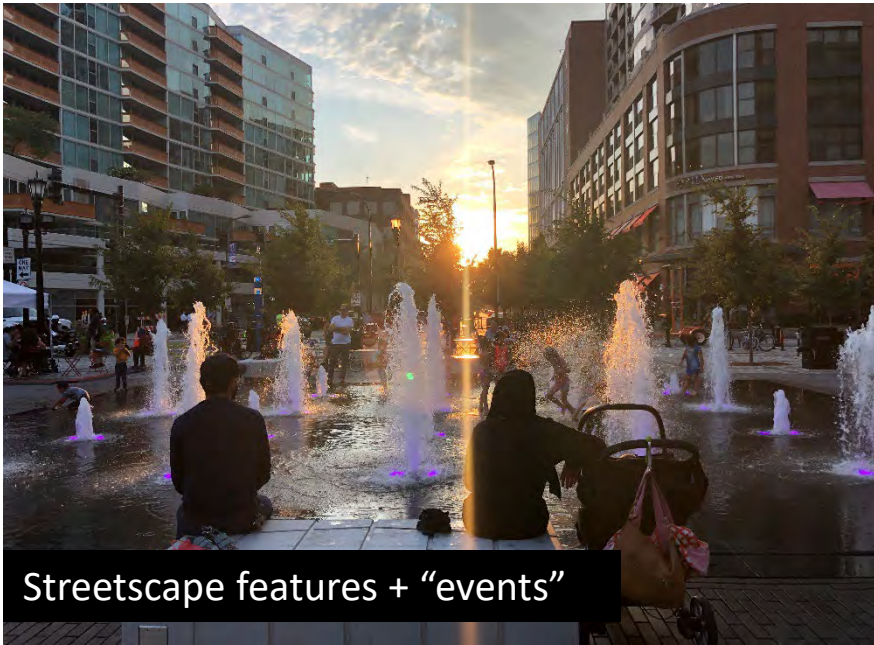


Specialty lighting effects



# Complete Streets + Business Vitality

---



Streetscape features + “events”



Temporary street closures + flexible outdoor spaces



Flexible outdoor seating + dining

# Plazas + Flex Spaces

---



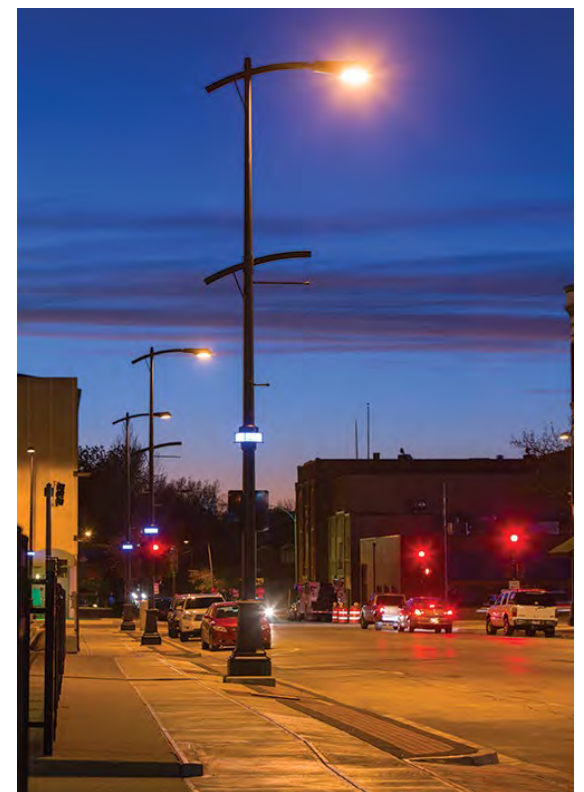
# Intersections + Crossings

---



# Protected Bikeways

---



# Lighting + Banners

---



Corridor landscaping +  
sustainable treatments

---



# Signage + Branding

---



Low Cost, High Return

# NEXT STEPS + QUESTIONS?

1. Share the website: Help us spread the word! <https://munster-streetscape.org/>
2. Farmers Market: *Bring your friends! August 4<sup>th</sup>, Community Park, 3-8pm*
3. Stakeholder interviews: *Who should we be talking to?*
4. Next Committee Meeting: *Streetscape Concepts + Alternatives*

## INPUT ACTIVITY

Log on to: MENTI.COM

Input code: 15 03 42