











SELF STORAGE  
FACILITY

W 45TH STREET AT FRAN-LIN PKWY  
MUNSTER, IN 46321

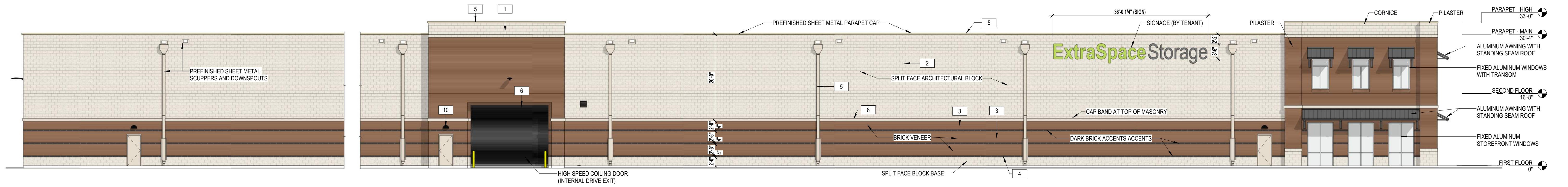




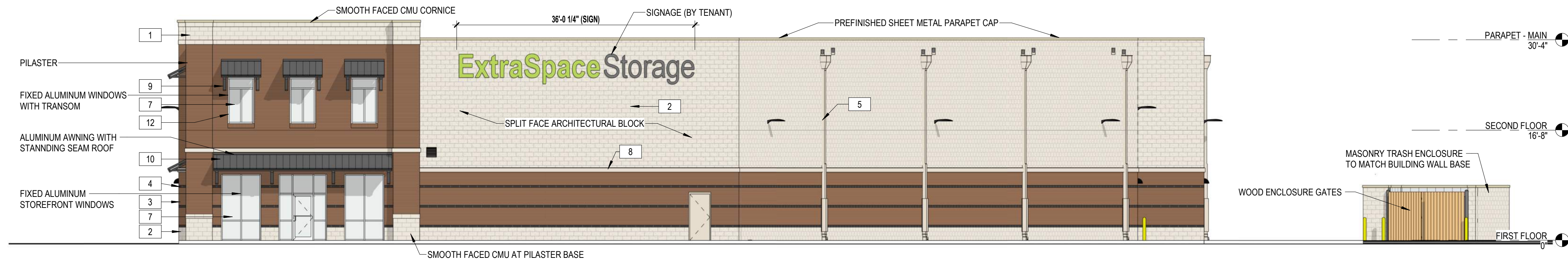
SELF STORAGE  
FACILITY

W 45TH STREET AT FRAN-LIN PKWY  
MUNSTER, IN 46321

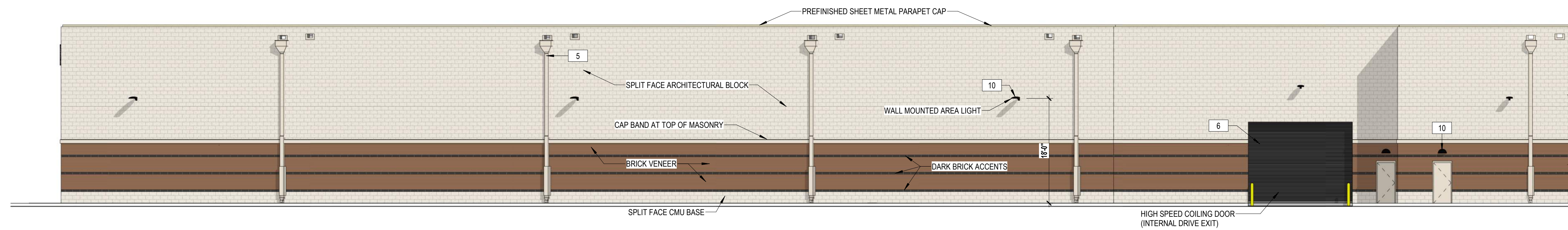




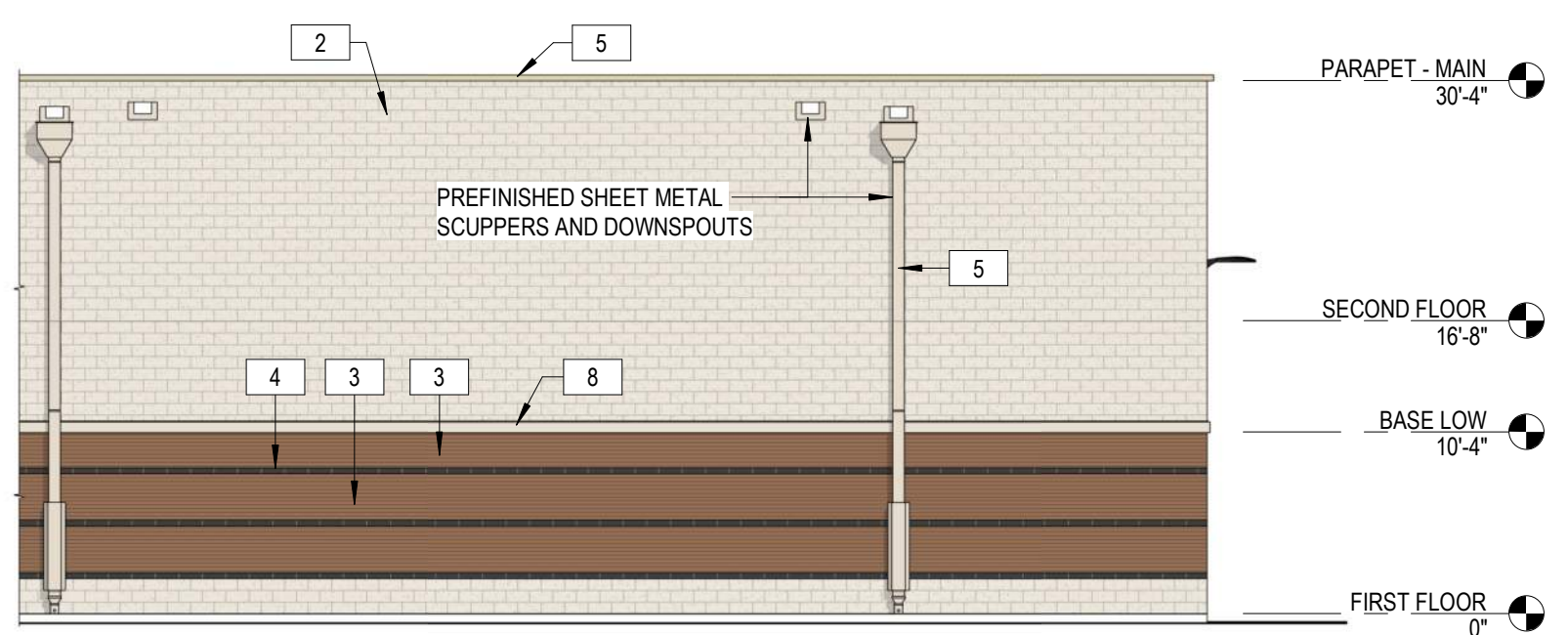
① NORTH ELEVATION (SHOPPING CENTER REAR DRIVE)  
3/32" = 1'-0"



② WEST ELEVATION - FRAN-LIN PKWY  
3/32" = 1'-0"



③ SOUTH ELEVATION (RAILROAD R.O.W.)  
3/32" = 1'-0"



④ EAST ELEVATION (EASTWOOD MALL SIDE)  
3/32" = 1'-0"

EXTERIOR FINISHES SCHEDULE		
1	DECORATIVE SMOOTH FACED CMU - INTEGRAL COLOR	RUNNING BOND 4" VENEER
2	DECORATIVE SPLIT FACED CMU - INTEGRAL COLOR	RUNNING BOND 4" VENEER
3	FACE BRICK	RUNNING BOND MODULAR VENEER
4	FACE BRICK ACCENT	RUNNING BOND MODULAR VENEER
5	COPING, SCUPPERS, DOWNSPOUTS, LOUVERS AND TRIM	PREFINISHED KYNAR COATED METAL
6	INSULATED OVERHEAD COILING DOOR	HIGH SPEED
7	GLAZING	SHERWIN WILLIAMS SW 7069 "IRON ORE"
8	SYNTHETIC STUCCO (E.I.F.S.) ACCENT	SAND FINISH
9	PREFINISHED ALUMINUM AWNING	STANDING SEAM ROOF
10	PREFINISHED AWNING BRACKETS	TO MATCH SHERWIN WILLIAMS SW 7069 "IRON ORE"
11	WALL MOUNTED LIGHT FIXTURES	MANUFACTURERS "BLACK" OR APPROVED EQUAL
12	STOREFRONT AND WINDOW SYSTEMS	CLEAR ANODIZED ALUMINUM OR APPROVED EQUAL

**SELF STORAGE  
FACILITY**  
W 45TH STREET AT FRAN-LIN PKWY  
MUNSTER, IN 46321

EXTERIOR ELEVATIONS - COLOR

A9.03



REFERENCE KEYNOTES			
03 21 00 B4	(3) #4 REBAR CONTINUOUS		
03 21 00 B22	(4) #6 REBAR CONTINUOUS WITH #3 TIES @ 16" O.C.		
03 21 00 F2	8" SLAB WITH #4 @ 10" EACH WAY; SEE CIVIL FOR SLOPES & ELEVATIONS		
04 05 19 E7	ADJUSTABLE BRICK TIES 16" O.C. HORIZONTALLY MAX		
04 20 00 A1	CAST STONE CAP		
04 22 00 A22	8" X 8" X 16" CMU; REF: STRUCTURAL FOR REINFORCING		
04 22 00 A32	4" X 8" X 16" SPLIT FACE CMU; REF: STRUCTURAL FOR REINFORCING		
07 62 00 F3	FLASHING, MORTAR NET, WEEPS @ 2'-8" AND END DAMS		
34 71 00 A1	BOLLARD		
34 71 00 A10	6" DIA GATE POSTS, 2" DIA LINE POSTS (TYPICAL)		

Jared Ducote  
ARCHITECT  
382 Gulf Breeze Parkway, PMB 125  
Gulf Breeze, Florida 32563  
850.438.1552 (P)

REGISTERED  
STATE OF FLORIDA  
No. AR12100088  
Jared Ducote  
ARCHITECT

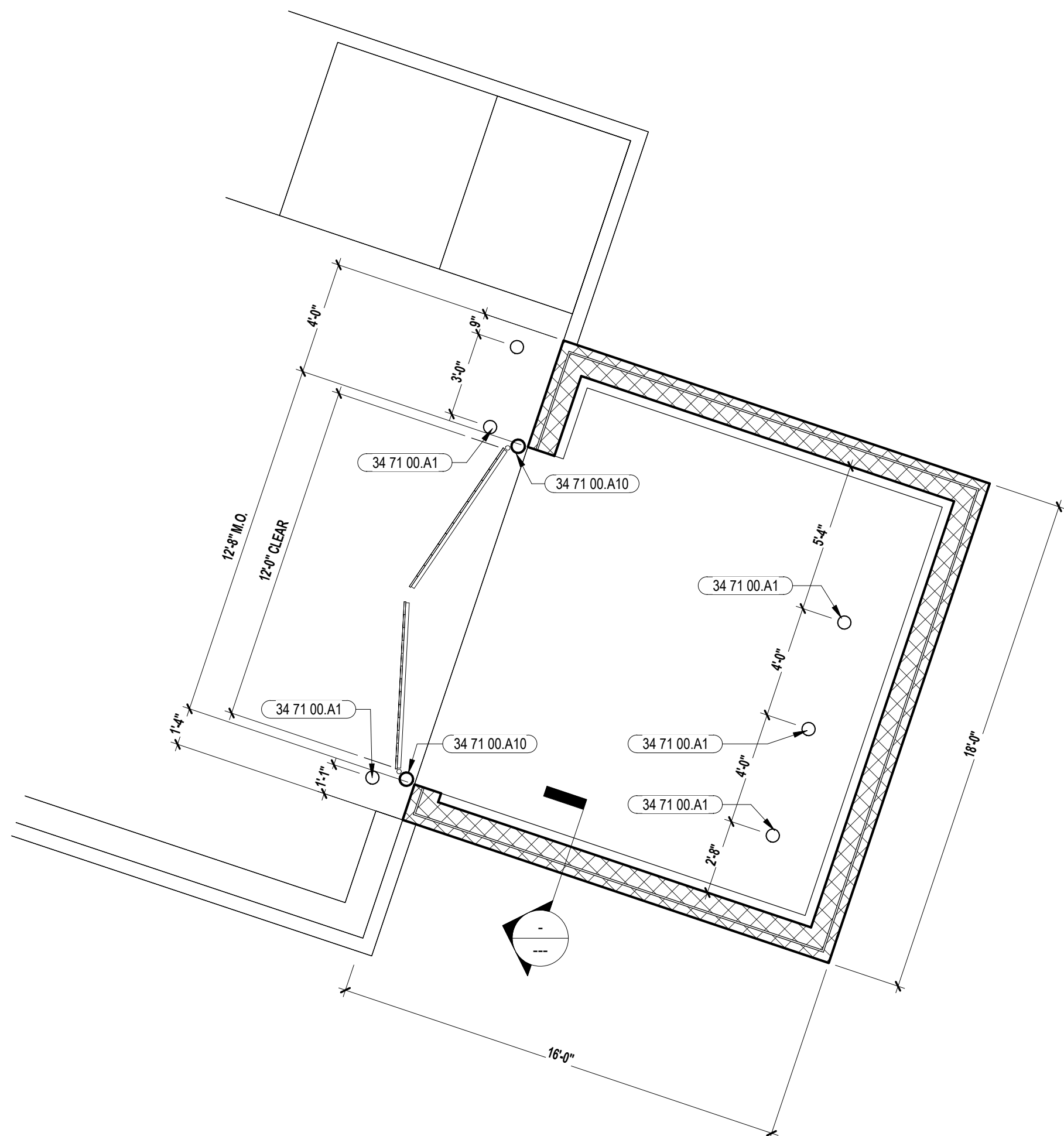
HEREBY CERTIFY THAT  
THIS DOCUMENT WAS  
PREPARED BY ME OR  
UNDER MY CLOSE  
SUPERVISION AND THAT  
I AM A LICENSED  
ARCHITECT OR ENGINEER  
UNDER THE LAWS OF THE  
STATE OF FLORIDA.  
AS SIGNED BY ME:  
DATE: 08/15/2025

REVISIONS			
REV	DATE	BY	DESCRIPTION
1			
2			
3			
4			
5			
6			
7			
8			
9			
10			
11			
12			
13			
14			
15			
16			
17			
18			
19			
20			
21			
22			
23			
24			
25			
26			
27			
28			
29			
30			
31			
32			
33			
34			
35			
36			
37			
38			
39			
40			
41			
42			
43			
44			
45			
46			
47			
48			
49			
50			
51			
52			
53			
54			
55			
56			
57			
58			
59			
60			
61			
62			
63			
64			
65			
66			
67			
68			
69			
70			
71			
72			
73			
74			
75			
76			
77			
78			
79			
80			
81			
82			
83			
84			
85			
86			
87			
88			
89			
90			
91			
92			
93			
94			
95			
96			
97			
98			
99			
100			

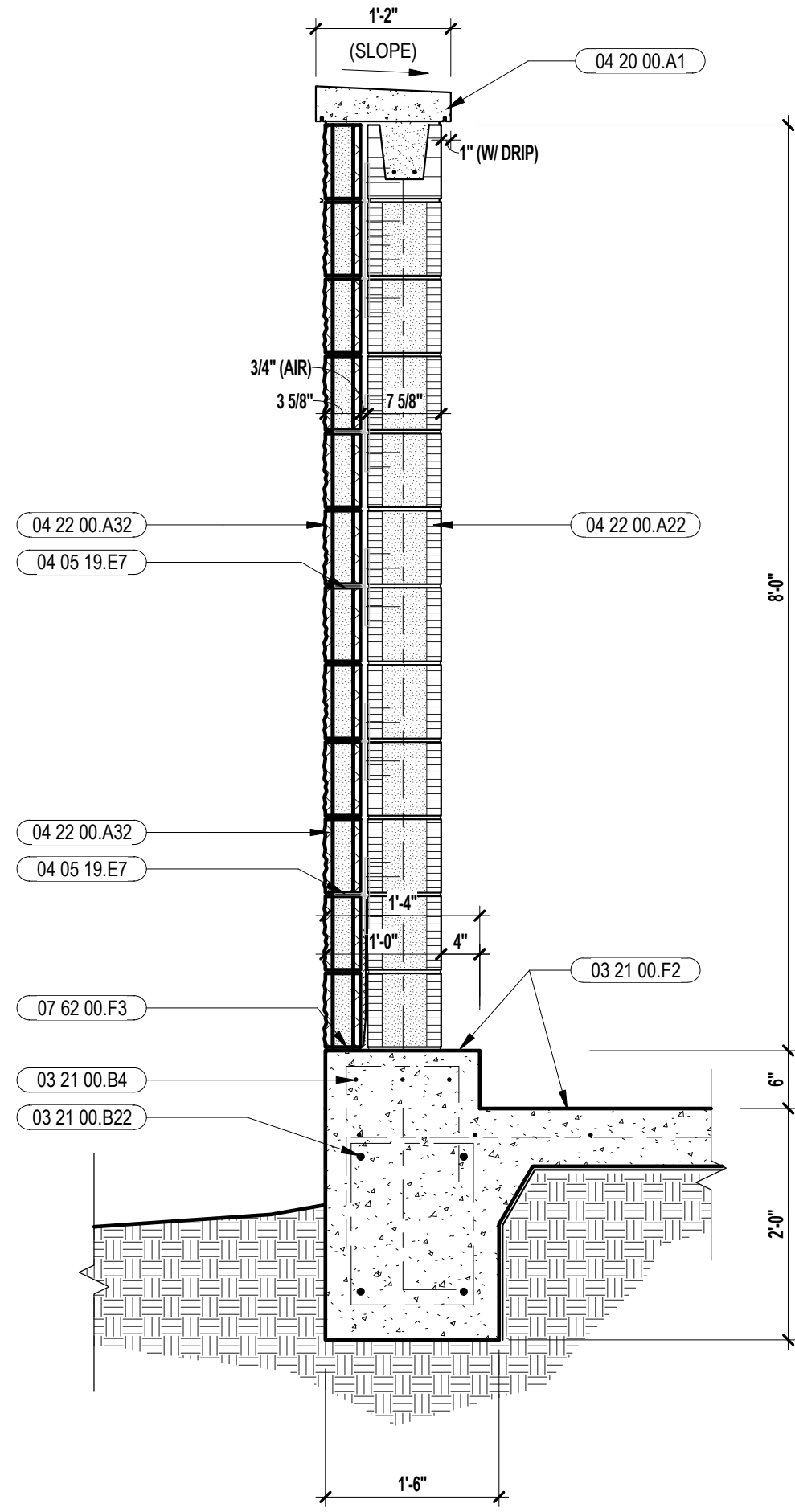
GENERAL NOTES			
1.	SEE CIVIL DRAWINGS FOR ALL CURB, PAVING, SIDEWALK, AND ADDITIONAL SITE INFORMATION NOT SHOWN		
2.	ALL BOLLARDS TO RECEIVE POLYETHYLENE BOLLARD COVER (SAFETY YELLOW)		

SITE DETAILS			
CADD PLOT:	SELF STORAGE FACILITY		
DRAWN BY:	(Fully Conditioned)		
BLW	W 45TH STREET AT FRANKLIN PKWY		
DATE:	MUNSTER, IN 46321		
DATE:	08/15/2025		
REVIEWED:			
UPD			

A0.02



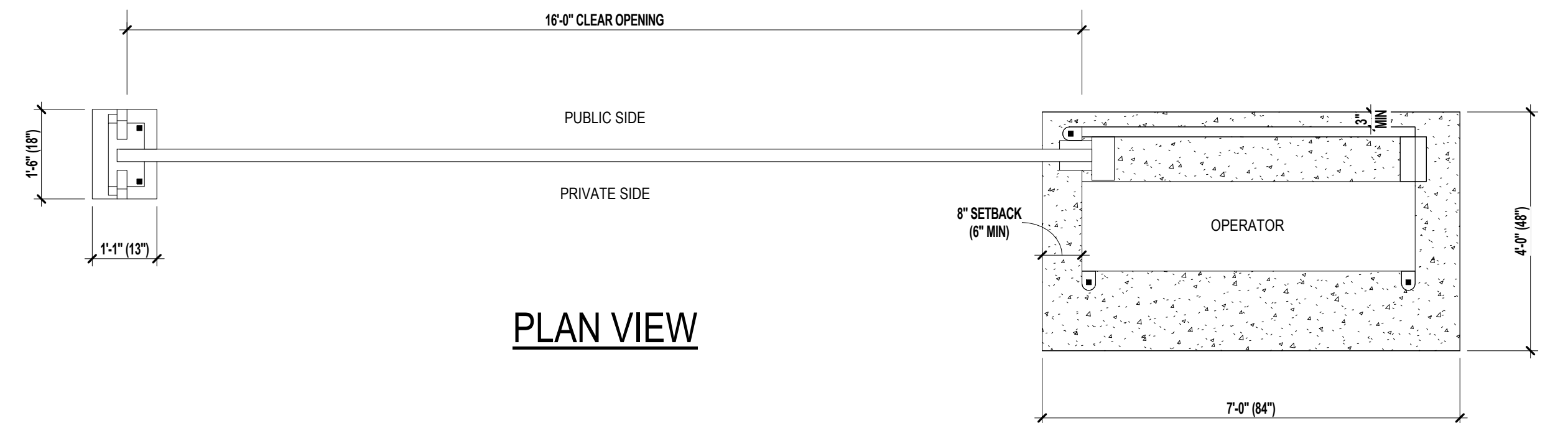
1 DUMPSTER ENCLOSURE - PLAN  
1/4" = 1'-0"



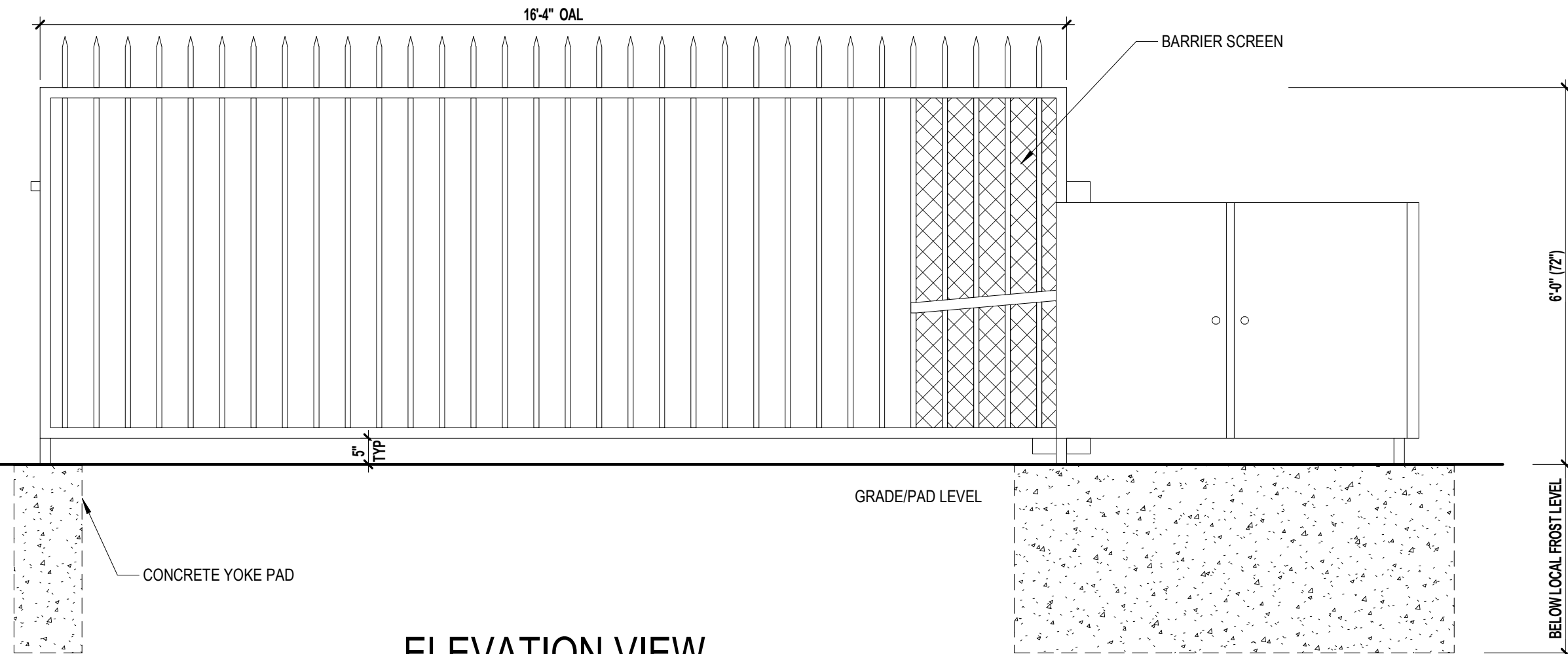
2 DUMPSTER ENCLOSURE  
3/4" = 1'-0"

SECURITY GATE TO BE SUPPLIED BY AUTOGATE, INC.  
ADDITIONAL INFORMATION/DETAILS TO BE PROVIDED  
BY GATE MANUFACTURER.

AUTOGATE, INC.  
7300 DRIVER ROAD, P.O. BOX 50  
BETHUN HEIGHTS, OH 44814  
TOLL FREE: 1-800-944-4283  
PHONE: (419) 588-2266  
FAX: (419) 588-3514  
WWW.AUTOGATE.COM

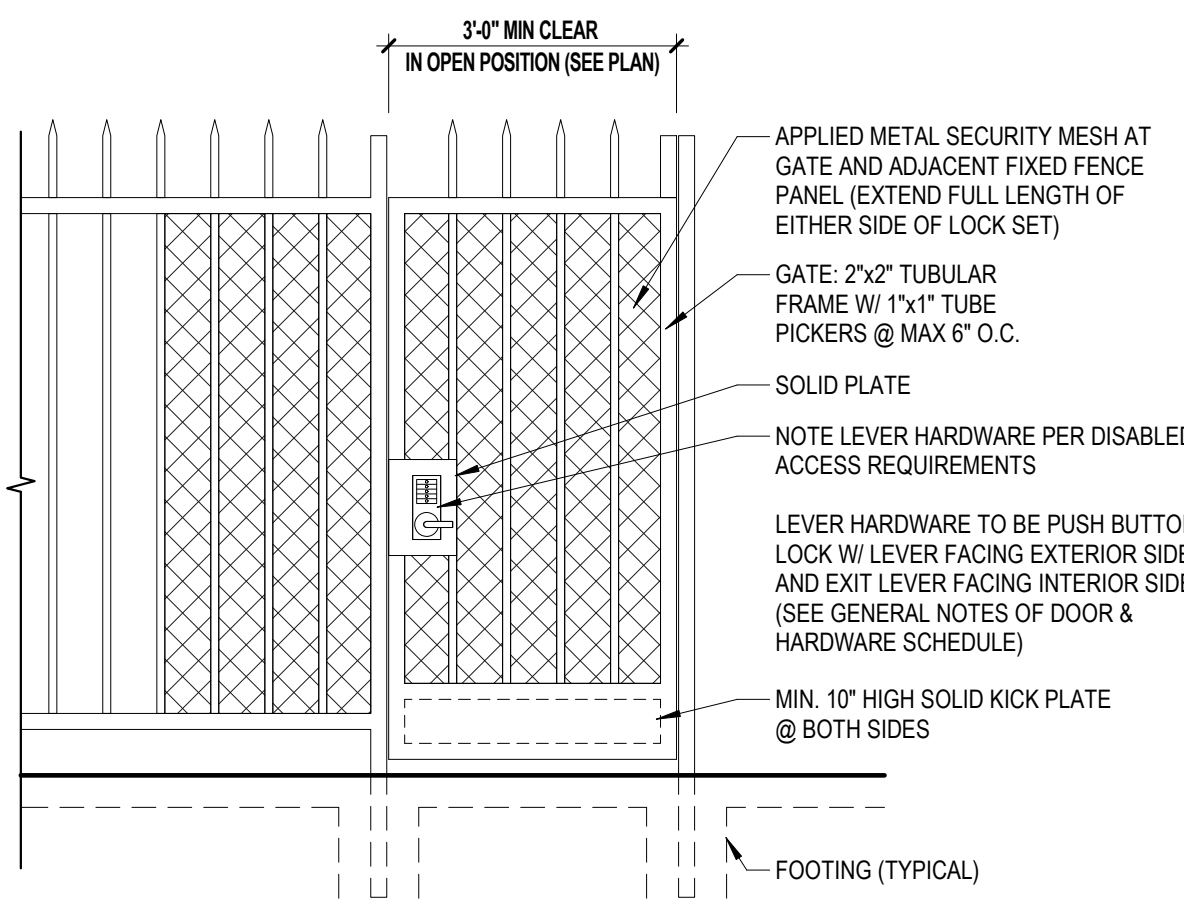


PLAN VIEW

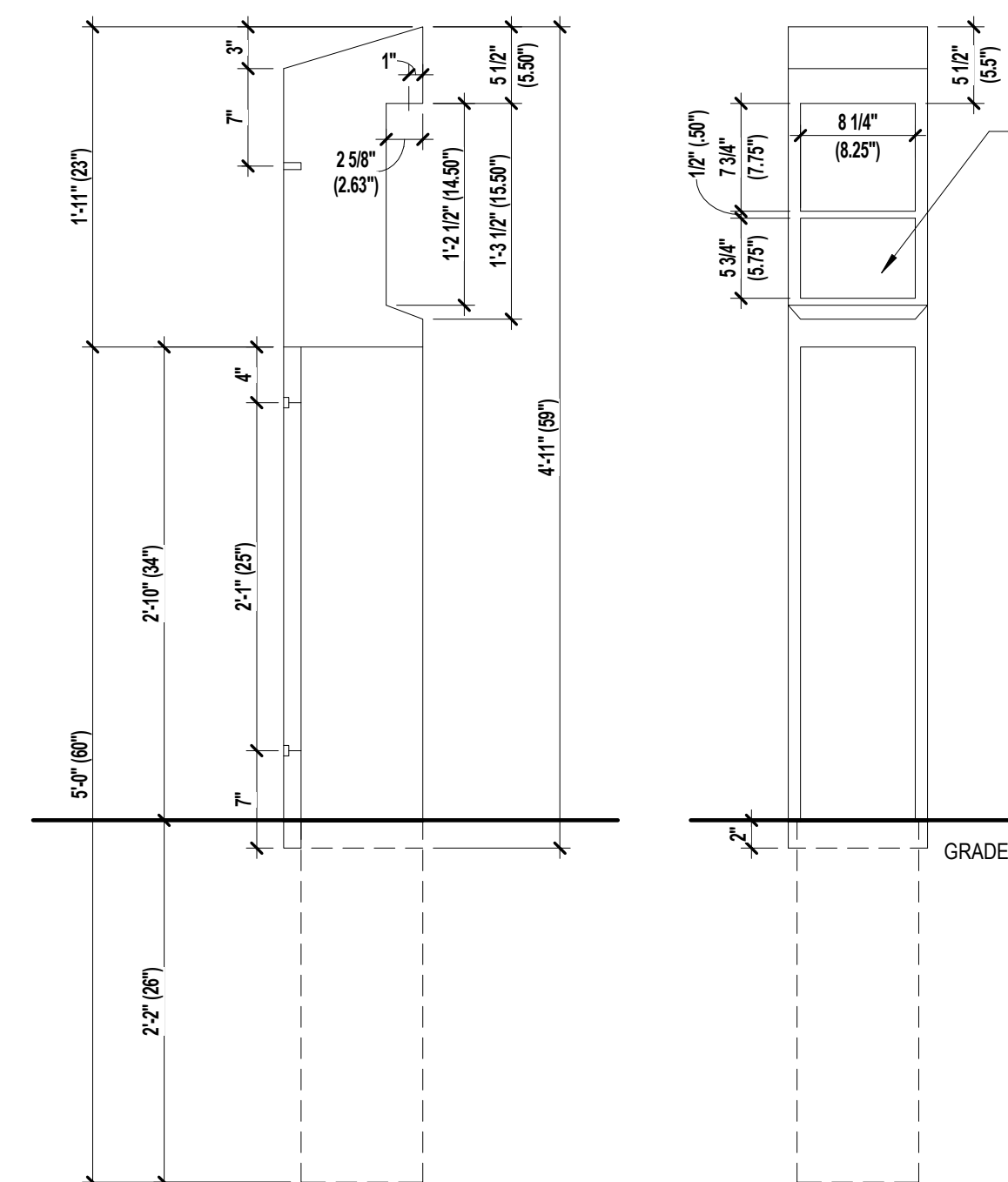


ELEVATION VIEW

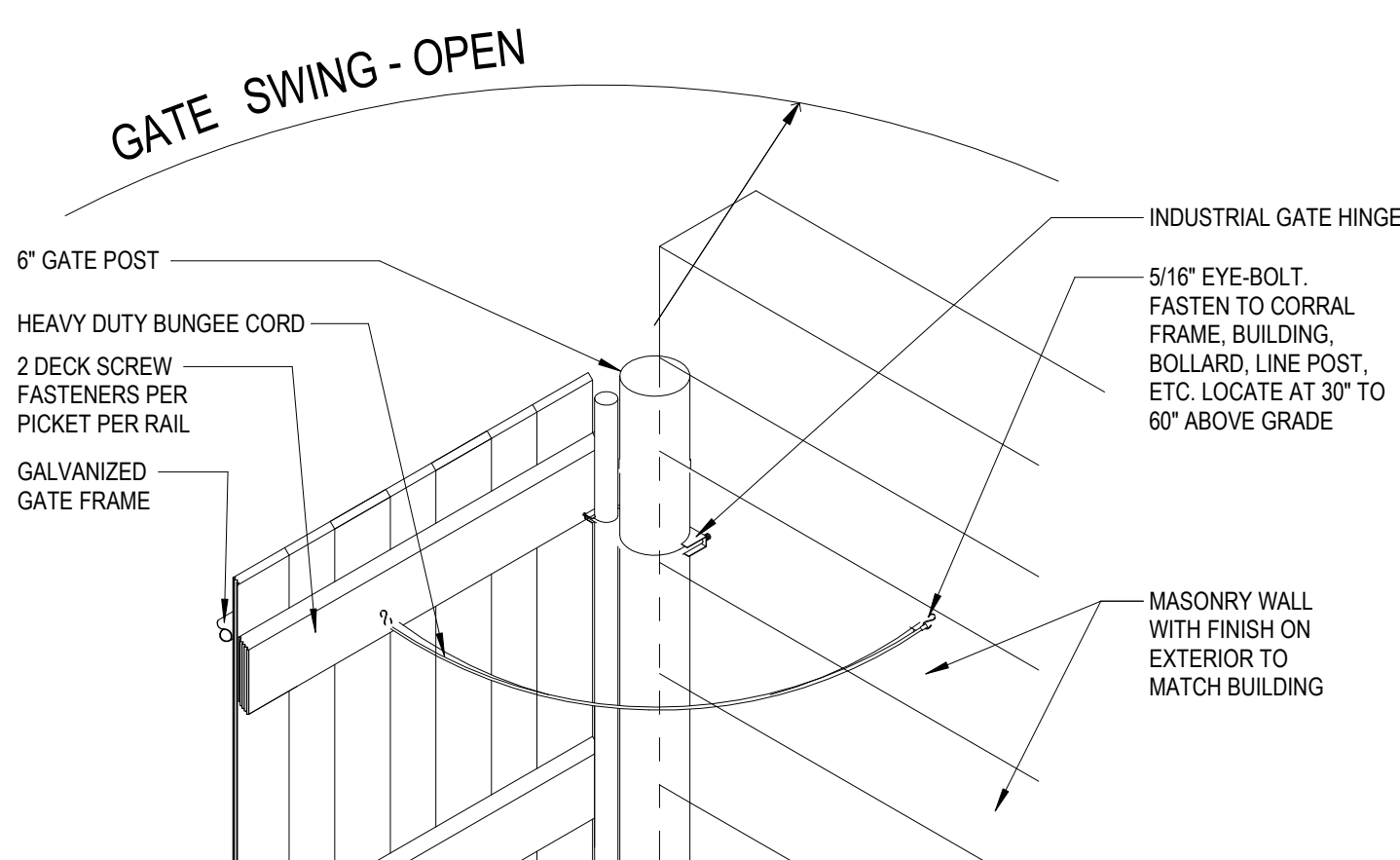
3 TYPICAL SECURITY GATE DETAILS  
1/2" = 1'-0"



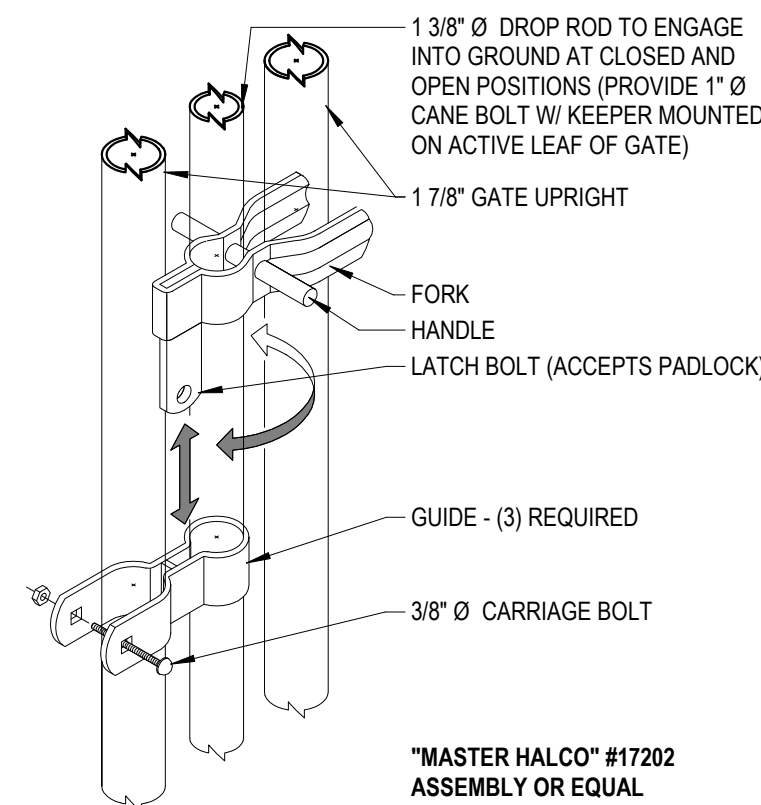
4 TYPICAL MAN GATE ELEVATION  
1/2" = 1'-0"



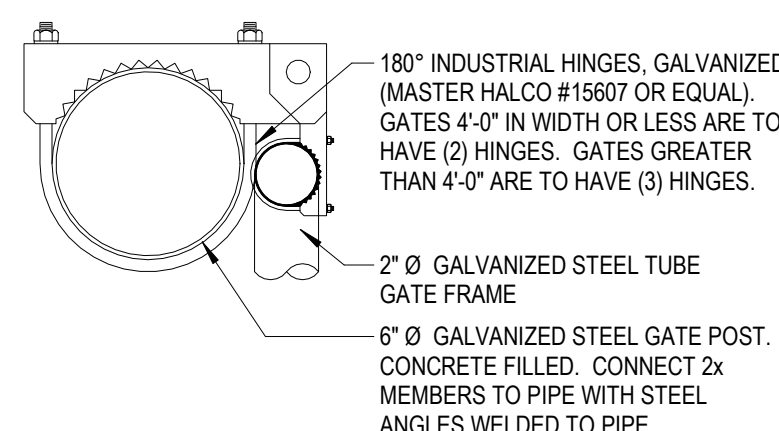
5 GATE KEY PAD - KEY PAD BOLLARD  
1" = 1'-0"



6 GATE HOLD-OPEN DETAIL  
3/4" = 1'-0"



7 INDUSTRIAL LATCH WITH DROP ROD & GATE HINGE  
1/2" = 1'-0"



8 INDUSTRIAL HINGE DETAIL  
1/2" = 1'-0"