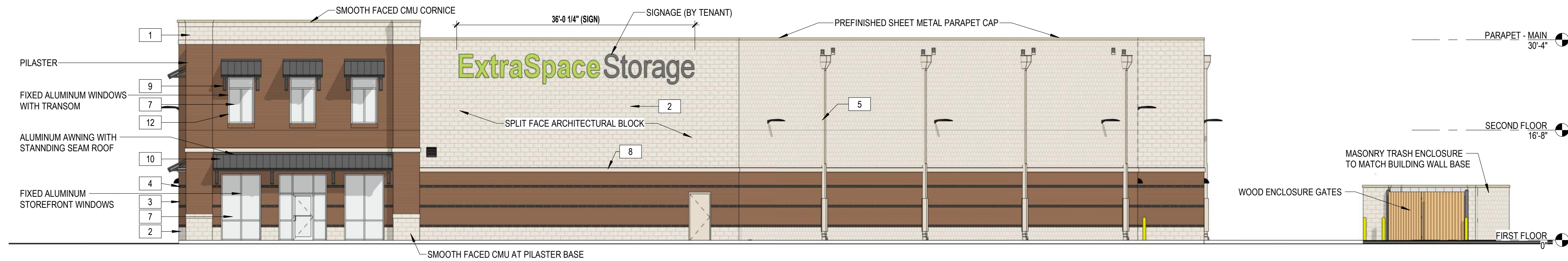
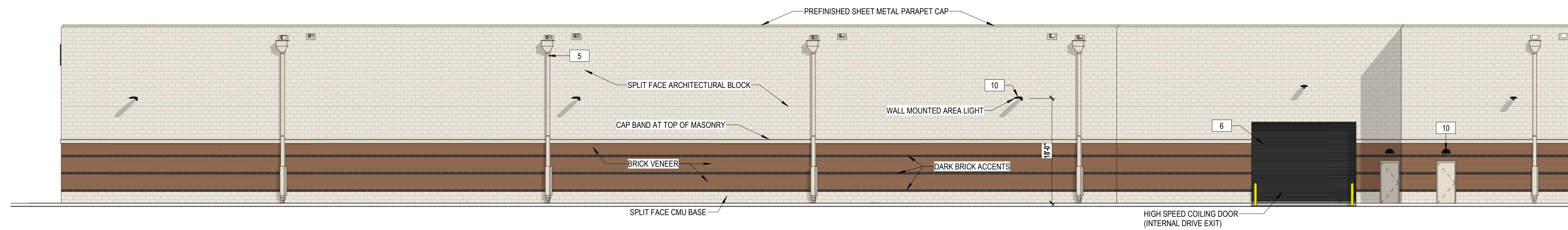


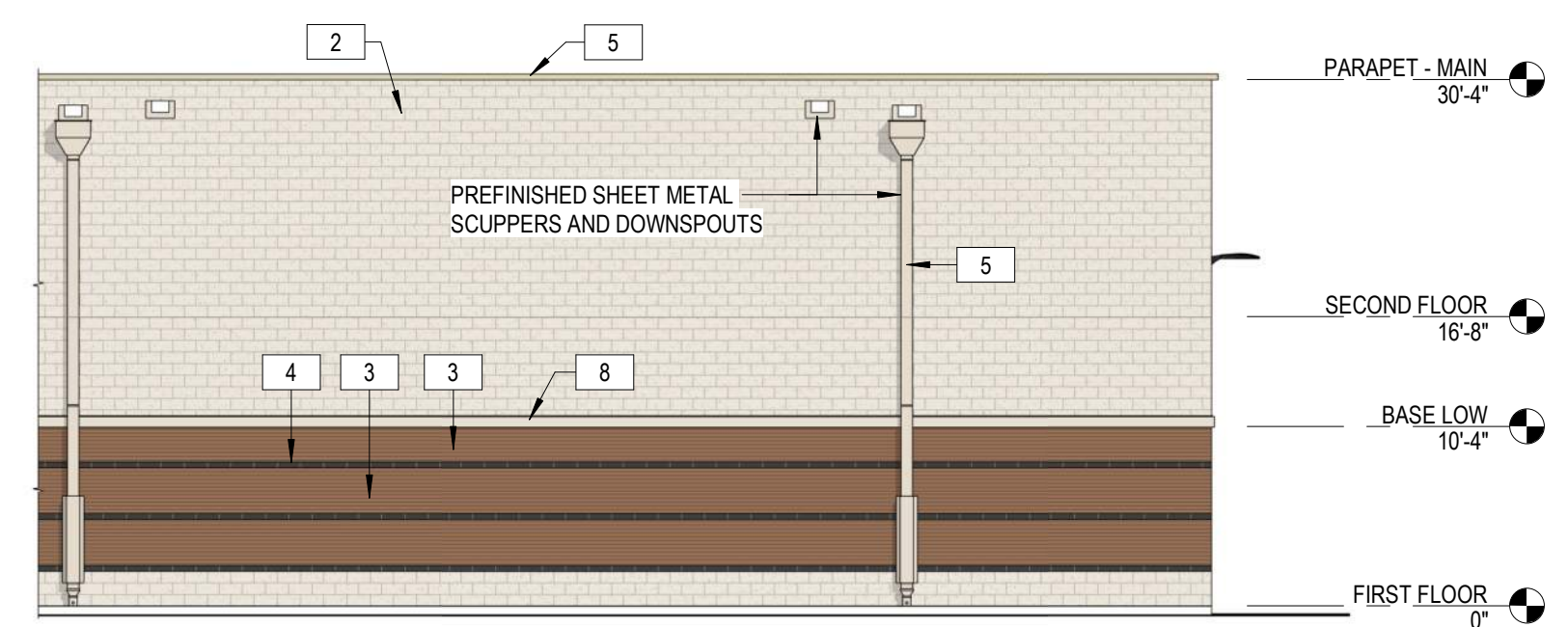
① NORTH ELEVATION (SHOPPING CENTER REAR DRIVE)
3/32" = 1'-0"



② WEST ELEVATION - FRAN-LIN PKWY
3/32" = 1'-0"



③ SOUTH ELEVATION (RAILROAD R.O.W.)
3/32" = 1'-0"



④ EAST ELEVATION (EASTWOOD MALL SIDE)
3/32" = 1'-0"

EXTERIOR FINISHES SCHEDULE		
1	DECORATIVE SMOOTH FACED CMU - INTEGRAL COLOR	RUNNING BOND 4" VENEER
2	DECORATIVE SPLIT FACED CMU - INTEGRAL COLOR	RUNNING BOND 4" VENEER
3	FACE BRICK	RUNNING BOND MODULAR VENEER
4	FACE BRICK ACCENT	RUNNING BOND MODULAR VENEER
5	COPING, SCUPPERS, DOWNSPOUTS, LOUVERS AND TRIM	PREFINISHED KYNAR COATED METAL
6	INSULATED OVERHEAD COILING DOOR	HIGH SPEED
7	GLAZING	SHERWIN WILLIAMS SW 7069 "IRON ORE"
8	SYNTHETIC STUCCO (E.I.F.S.) ACCENT	SAND FINISH
9	PREFINISHED ALUMINUM AWNING	STANDING SEAM ROOF
10	PREFINISHED AWNING BRACKETS	TO MATCH SHERWIN WILLIAMS SW 7069 "IRON ORE"
11	WALL MOUNTED LIGHT FIXTURES	MANUFACTURERS "BLACK" OR APPROVED EQUAL
12	STOREFRONT AND WINDOW SYSTEMS	CLEAR ANODIZED ALUMINUM OR APPROVED EQUAL

**SELF STORAGE
FACILITY**
W 45TH STREET AT FRAN-LIN PKWY
MUNSTER, IN 46321

EXTERIOR ELEVATIONS - COLOR

A9.03