



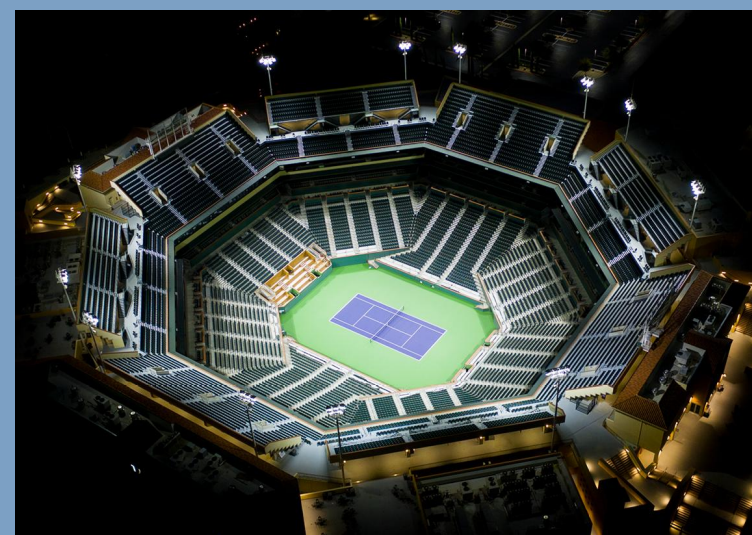
Temple ISD, Temple, Texas, USA



Riverdale Ridge High School, Thornton, Colorado, USA



Mt. San Antonio College, Walnut, California, USA



Indian Wells Tennis Garden, Indian Wells, California, USA

Munster HS Tennis



Sales Representative: Brent Castle · Designed By: Colin Baldwin · Design No.: 235780A · July 30, 2025

Munster HS Tennis

LIGHTING SYSTEM

Structure/Fixture Summary						
Structure ID	Structure Height	Fixt. Attachment Ht.	Fixture Qty	Fixture Type	Design Load	Circuit
T1	50'	50'	2	TLC-LED-1200	2.33 kW	A
T2	50'	50'	2	TLC-LED-1200	2.33 kW	A
		50'	2	TLC-LED-550	1.05 kW	B
T3	50'	50'	2	TLC-LED-1200	2.33 kW	A
		50'	4	TLC-LED-550	2.11 kW	B
T4	50'	50'	2	TLC-LED-1200	2.33 kW	A
T5	40'	40'	4	TLC-LED-550	2.11 kW	B
T6-T8	40'	40'	2	TLC-LED-550	1.05 kW	B
T9	50'	50'	8	TLC-LED-550	4.22 kW	B
T10-T11	50'	50'	4	TLC-LED-550	2.11 kW	B
11			40		26.18 kW	

*Fixtures in this design have dimmed output values to meet design specific needs.

Circuit Summary			
Circuit	Description	Design Load	Fixture Qty
A	West Courts	9.32 kW	8
B	Championship Courts	16.86 kW	32

Fixture Type Summary								
Type	Circuit	Source	Avg. Wattage	Avg. Lumens	L90	L80	L70	Quantity
TLC-LED-1200	A	LED 5700K - 75 CRI	1165W	148,838	>120,000	>120,000	>120,000	8
TLC-LED-550	B	LED 5700K - 75 CRI	527W	65,418	>120,000	>120,000	>120,000	32

Single Fixture Amperage Draw Chart							
Driver Specifications (.90 min power factor)	Line Amperage Per Fixture (max draw)						
Single Phase Voltage	208 (60)	220 (60)	240 (60)	277 (60)	347 (60)	380 (60)	480 (60)
TLC-LED-1200	6.9	6.5	6.0	5.2	4.2	3.8	3.0
TLC-LED-550	3.2	3.0	2.8	2.4	1.9	1.8	1.4

*Amp draw based on 100% fixture output, consult design specific datasheet for adjusted amperage draw chart

Light Level Summary

Calculation Grid Summary								
Grid Name	Calculation Metric	Illumination Ave					Circuits	Fixture Qty
		Ave	Min	Max	Max/Min	Ave/Min		
Championship Tennis	Horizontal Illuminance	50.52	38	62	1.66	1.34	B	32
Project Spill @ 3.00ft.	Horizontal Illuminance	0.0006	0.00	0.01	-	-	A	8
Project Spill @ 5.00ft.	Max Candela Metric	69.2191	0.00	884.76	-	-	A	8
Project Spill @ 5.00ft.	Max Vertical Illuminance Metric	0.0015	0.00	0.02	-	-	A	8
Project Spill @ 5.00ft.	True Max Vert Illuminance Metric	0.0014	0.00	0.02	-	-	A	8
West Courts	Horizontal Illuminance	48.25	32	71	2.21	1.49	A	8

Guaranteed Performance: The ILLUMINATION described above is guaranteed per your Musco Warranty document.

Field Measurements: Individual field measurements may vary from computer-calculated predictions.

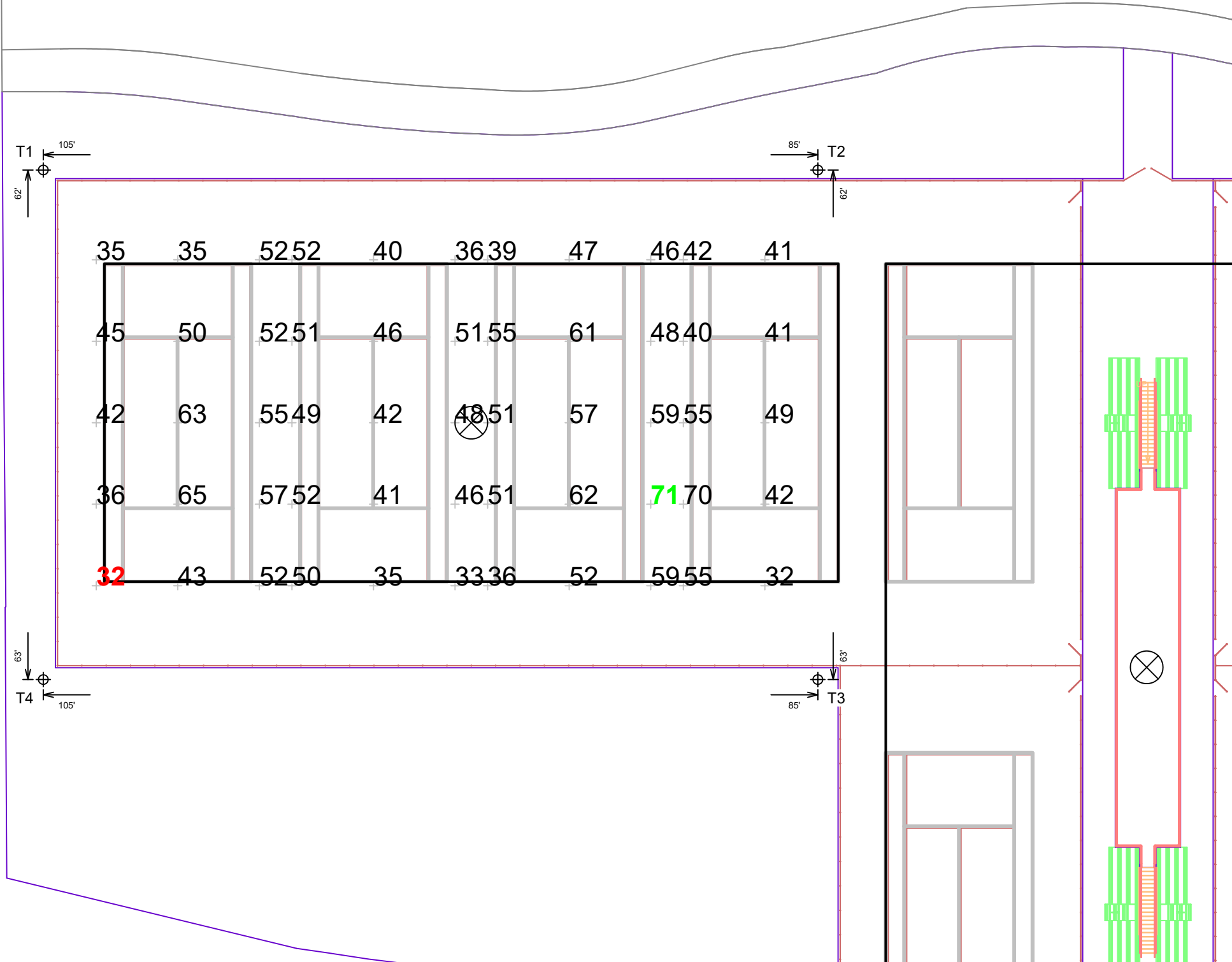
Electrical System Requirements: Refer to Amperage Draw Chart and/or the "Musco Control System Summary" for electrical sizing.

Installation Requirements: Results assume ± 3% nominal voltage at line side of the driver and structures located within 3 feet (1m) of design locations.



Equipment List For Areas Shown								
Structure				Fixtures				
QTY	STRUCTURE ID	SIZE	GRADE ELEVATION	ABOVE FIELD LEVEL	FIXTURE TYPE	QTY/POLE	THIS GRID	OTHER GRIDS
2	T1 T4	50'	-	50'	TLC-LED-1200	2	2	0
1	T2	50'	-	50'	TLC-LED-1200	2	2	0
				50'	TLC-LED-550	2	0	2
1	T3	50'	-	50'	TLC-LED-1200	2	2	0
				50'	TLC-LED-550	1/3*	0	4
4	Totals					14	8	6

Above Field Level is height of fixtures above area shown
*This structure utilizes a back-to-back mounting configuration



Munster HS Tennis

Grid Summary

Name: West Courts
Size: 4 Court - 12' Spacing
Spacing: 20.0' x 20.0'
Height: 3.0' above grade

Illumination Summary

	MAINTAINED HORIZONTAL FOOTCANDLES
	Entire Grid
Guaranteed Average:	40
Scan Average:	48.25
Maximum:	71
Minimum:	32
Avg/Min:	1.49
Guaranteed Max/Min:	2.5
Max/Min:	2.21
UG (adjacent pts):	0.00
CU:	0.89
No. of Points:	55
FIXTURE INFORMATION	
Applied Circuits:	A
No. of Fixtures:	8
Total Load:	9.32 kW

Guaranteed Performance: The ILLUMINATION described above is guaranteed per your Musco Warranty document.

Field Measurements: Individual field measurements may vary from computer-calculated predictions.

Electrical System Requirements: Refer to Amperage Draw Chart and/or the "Musco Control System Summary" for electrical sizing.

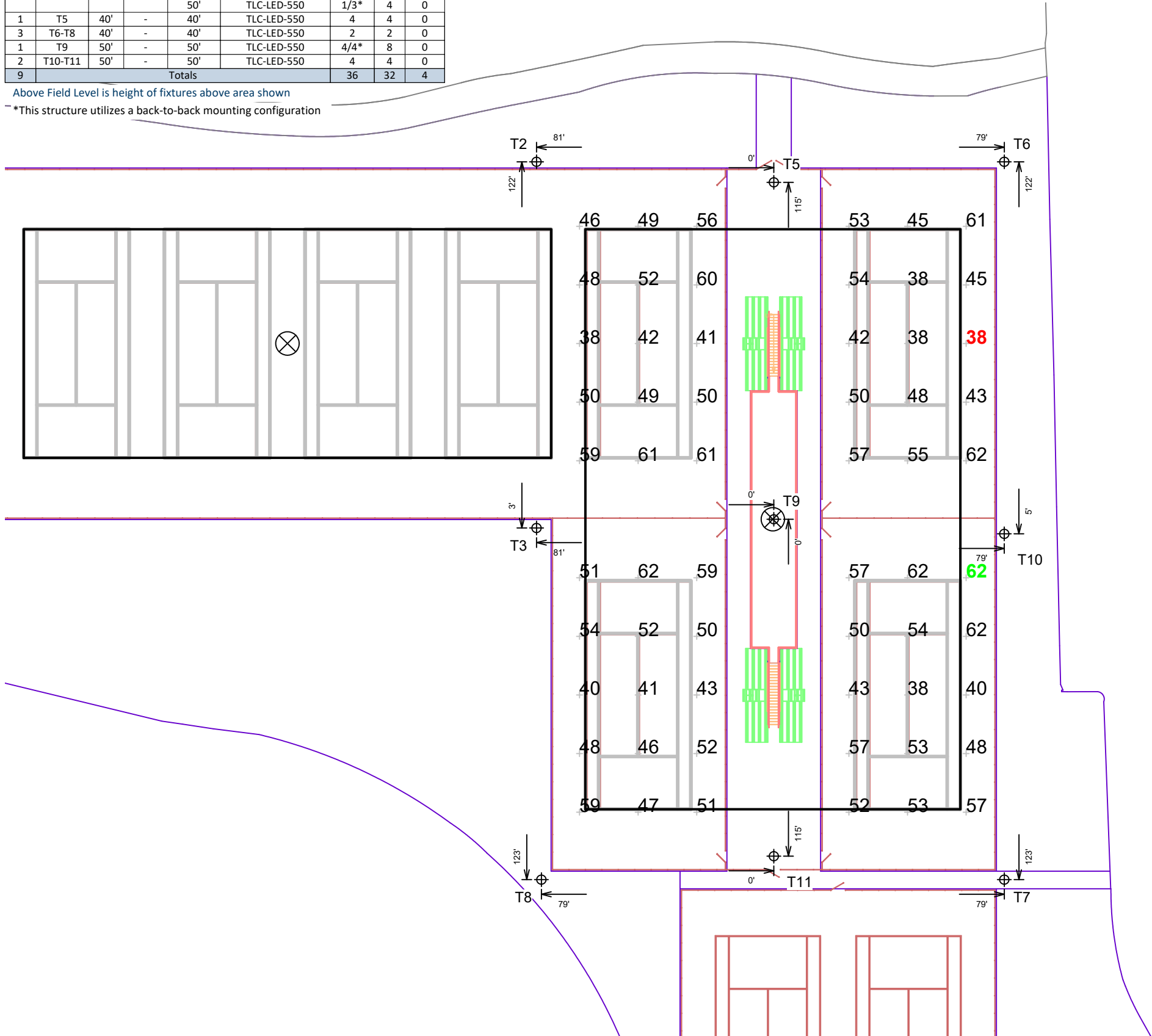
Installation Requirements: Results assume ± 3% nominal voltage at line side of the driver and structures located within 3 feet (1m) of design locations.

Not to be reproduced in whole or part without the written consent of Musco Sports Lighting, LLC.
©1981, 2025 Musco Sports Lighting, LLC.

ILLUMINATION SUMMARY

Equipment List For Areas Shown								
Structure				Fixtures				
QTY	STRUCTURE ID	SIZE	GRADE ELEVATION	ABOVE FIELD LEVEL	FIXTURE TYPE	QTY/POLE	THIS GRID	OTHER GRIDS
1	T2	50'	-	50'	TLC-LED-1200	2	0	2
				50'	TLC-LED-550	2	2	0
1	T3	50'	-	50'	TLC-LED-1200	2	0	2
				50'	TLC-LED-550	1/3*	4	0
1	T5	40'	-	40'	TLC-LED-550	4	4	0
3	T6-T8	40'	-	40'	TLC-LED-550	2	2	0
1	T9	50'	-	50'	TLC-LED-550	4/4*	8	0
2	T10-T11	50'	-	50'	TLC-LED-550	4	4	0
9	Totals					36	32	4

Above Field Level is height of fixtures above area shown
*This structure utilizes a back-to-back mounting configuration



Munster HS Tennis

Grid Summary		
Name:	Championship Tennis	
Size:	4 Court - 56' Spacing	
Spacing:	20.0' x 20.0'	
Height:	3.0' above grade	

Illumination Summary	
	MAINTAINED HORIZONTAL FOOTCANDLES
	Entire Grid
Guaranteed Average:	50
Scan Average:	50.52
Maximum:	62
Minimum:	38
Avg/Min:	1.34
Guaranteed Max/Min:	2
Max/Min:	1.66
UG (adjacent pts):	0.00
CU:	0.58
No. of Points:	60
FIXTURE INFORMATION	
Applied Circuits:	B
No. of Fixtures:	32
Total Load:	16.86 kW

Guaranteed Performance: The ILLUMINATION described above is guaranteed per your Musco Warranty document.

Field Measurements: Individual field measurements may vary from computer-calculated predictions.

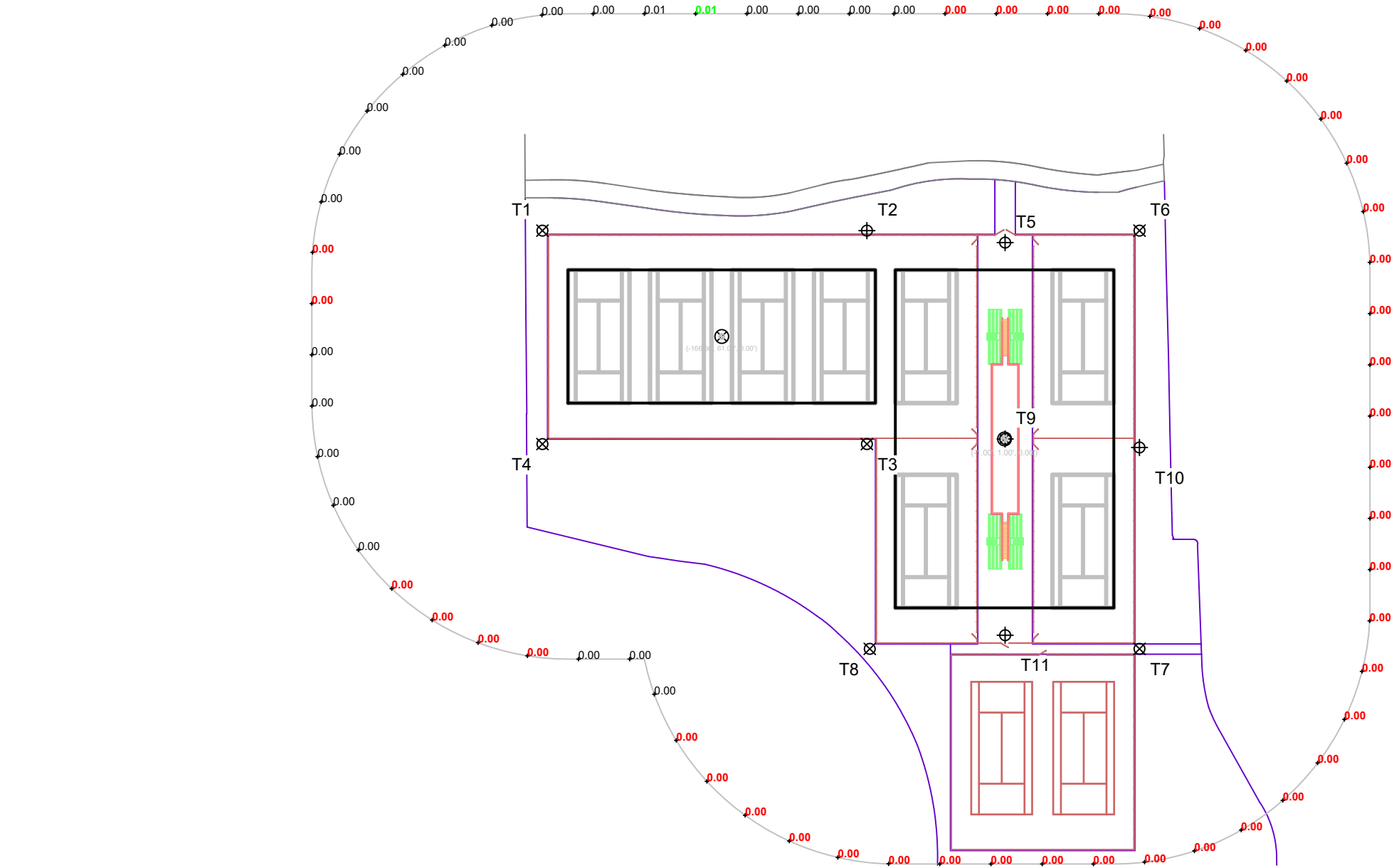
Electrical System Requirements: Refer to Amperage Draw Chart and/or the "Musco Control System Summary" for electrical sizing.

Installation Requirements: Results assume ± 3% nominal voltage at line side of the driver and structures located within 3 feet (1m) of design locations.



Equipment List For Areas Shown								
Structure				Fixtures				
QTY	STRUCTURE ID	SIZE	GRADE ELEVATION	ABOVE FIELD LEVEL	FIXTURE TYPE	QTY/POLE	THIS GRID	OTHER GRIDS
2	T1 T4	50'	-	50'	TLC-LED-1200	2	2	0
1	T2	50'	-	50'	TLC-LED-1200	2	2	0
				50'	TLC-LED-550	2	0	2
1	T3	50'	-	50'	TLC-LED-1200	2	2	0
				50'	TLC-LED-550	1/3*	0	4
4	Totals					14	8	6

Above Field Level is height of fixtures above area shown
*This structure utilizes a back-to-back mounting configuration



Munster HS Tennis

Grid Summary	
Name:	Project Spill @ 3.00ft.
Spacing:	30.0'
Height:	3.0' above grade

Illumination Summary	
	INITIAL HORIZONTAL FOOTCANDLES
Scan Average:	Entire Grid 0.0006
Maximum:	0.01
Minimum:	0.00
CU:	0.00
No. of Points:	64
FIXTURE INFORMATION	
Applied Circuits:	A
No. of Fixtures:	8
Total Load:	9.32 kW

Guaranteed Performance: The ILLUMINATION described above is guaranteed per your Musco Warranty document.

Field Measurements: Individual field measurements may vary from computer-calculated predictions.

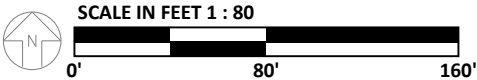
Electrical System Requirements: Refer to Amperage Draw Chart and/or the "Musco Control System Summary" for electrical sizing.

Installation Requirements: Results assume ± 3% nominal voltage at line side of the driver and structures located within 3 feet (1m) of design locations.



Structure				Fixtures				
QTY	STRUCTURE ID	SIZE	GRADE ELEVATION	ABOVE FIELD LEVEL	FIXTURE TYPE	QTY/POLE	THIS GRID	OTHER GRIDS
2	T1 T4	50'	-	50'	TLC-LED-1200	2	2	0
1	T2	50'	-	50'	TLC-LED-1200	2	2	0
				50'	TLC-LED-550	2	0	2
1	T3	50'	-	50'	TLC-LED-1200	2	2	0
				50'	TLC-LED-550	1/3*	0	4
4				Totals		14	8	6

*This structure utilizes a back-to-back mounting configuration



ENGINEERED DESIGN By: Colin Baldwin • File #235780A • 30-Jul-25

Grid Summary	
	Name: Project Spill @ 5.00ft. Spacing: 30.0' Height: 5.0' above grade

INITIAL CANDELA (PER FIXTURE)	
Entire Grid	
Scan Average:	69.2191
Maximum:	884.76
Minimum:	0.00
CU:	0.00
No. of Points:	64
FIXTURE INFORMATION	
Applied Circuits:	A
No. of Fixtures:	8
Total Load:	9.32 kW

Field Measurements: Individual field measurements may vary from computer-calculated predictions.

Electrical System Requirements: Refer to Amperage Draw Chart and/or the **"Musco Control System Summary"** for electrical sizing.

Installation Requirements: Results assume $\pm 3\%$ nominal voltage at line side of the driver and structures located within 3 feet (1m) of design locations.

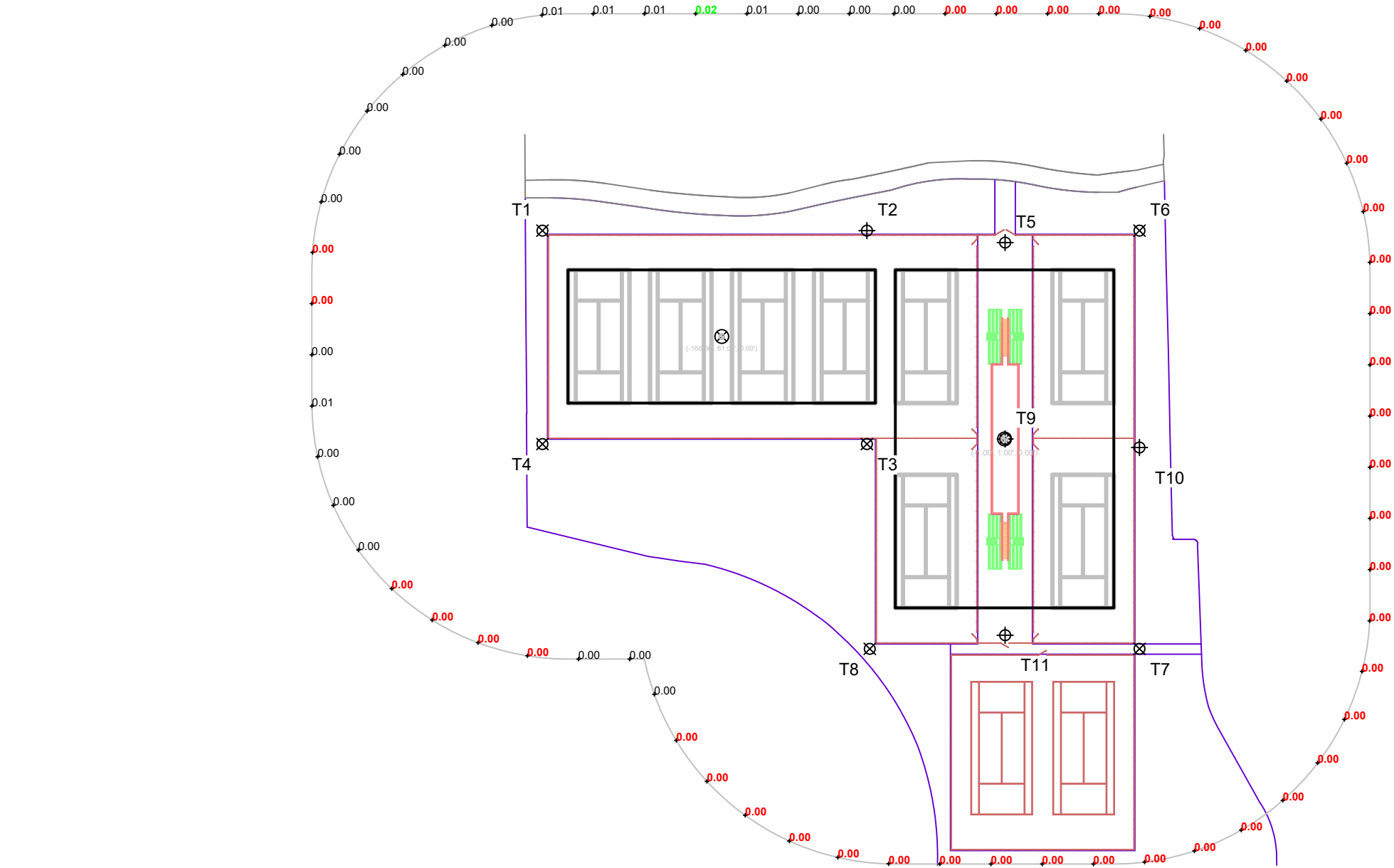


Not to be reproduced in whole or part without the written consent of Musco Sports Lighting, LLC.
©1981, 2025 Musco Sports Lighting, LLC.

ILLUMINATION SUMMARY

Equipment List For Areas Shown								
Structure				Fixtures				
QTY	STRUCTURE ID	SIZE	GRADE ELEVATION	ABOVE FIELD LEVEL	FIXTURE TYPE	QTY/POLE	THIS GRID	OTHER GRIDS
2	T1 T4	50'	-	50'	TLC-LED-1200	2	2	0
1	T2	50'	-	50'	TLC-LED-1200	2	2	0
				50'	TLC-LED-550	2	0	2
1	T3	50'	-	50'	TLC-LED-1200	2	2	0
				50'	TLC-LED-550	1/3*	0	4
4	Totals					14	8	6

Above Field Level is height of fixtures above area shown
*This structure utilizes a back-to-back mounting configuration



Munster HS Tennis

Grid Summary	
Name:	Project Spill @ 5.00ft.
Spacing:	30.0'
Height:	5.0' above grade

Illumination Summary	
INITIAL MAX VERTICAL FOOTCANDLES	
Entire Grid	
Scan Average:	0.0015
Maximum:	0.02
Minimum:	0.00
CU:	0.00
No. of Points:	64
FIXTURE INFORMATION	
Applied Circuits:	A
No. of Fixtures:	8
Total Load:	9.32 kW

Guaranteed Performance: The ILLUMINATION described above is guaranteed per your Musco Warranty document.

Field Measurements: Individual field measurements may vary from computer-calculated predictions.

Electrical System Requirements: Refer to Amperage Draw Chart and/or the "Musco Control System Summary" for electrical sizing.

Installation Requirements: Results assume ± 3% nominal voltage at line side of the driver and structures located within 3 feet (1m) of design locations.



Munster HS Tennis

Equipment Layout

INCLUDES:

- Championship Tennis
- West Courts

Electrical System Requirements: Refer to Amperage Draw Chart and/or the "Musco Control System Summary" for electrical sizing.

Installation Requirements: Results assume ± 3% nominal voltage at line side of the driver and structures located within 3 feet (1m) of design locations.

Equipment List For Areas Shown						
Structure				Fixtures		
QTY	STRUCTURE ID	SIZE	GLOBAL ELEVATION	ABOVE GLOBAL LEVEL	FIXTURE TYPE	QTY/POLE
2	T1 T4	50'	-	50'	TLC-LED-1200	2
1	T2	50'	-	50'	TLC-LED-1200	2
				50'	TLC-LED-550	2
1	T3	50'	-	50'	TLC-LED-1200	2
				50'	TLC-LED-550	1/3*
1	T5	40'	-	40'	TLC-LED-550	4
3	T6-T8	40'	-	40'	TLC-LED-550	2
1	T9	50'	-	50'	TLC-LED-550	4/4*
2	T10-T11	50'	-	50'	TLC-LED-550	4
11	Totals					40

*This structure utilizes a back-to-back mounting configuration
Above Global Level is height of fixtures above design (0,0,0)

Single Fixture Amperage Draw Chart							
Driver Specifications (.90 min power factor)		Line Amperage Per Fixture (max draw)					
Single Phase Voltage		208 (60)	220 (60)	240 (60)	277 (60)	347 (60)	480 (60)
TLC-LED-1200		6.9	6.5	6.0	5.2	4.2	3.8
TLC-LED-550		3.2	3.0	2.8	2.4	1.9	1.4

*Amp draw based on 100% fixture output, consult design specific datasheet for adjusted amperage draw chart

