



Shown: Silver

# Rustic Face

## SHOTBLASTED CMU

Our Rustic Face CMU features a textured-face block generated by blasting small pellets at the surface of the unit. This shot blasting produces a final product that leaves the larger pieces of aggregate in place while the very fine sandy portion of the surface is removed. This effect provides a weathered, rustic appearance to a building envelope.

Rustic Face masonry units are manufactured in the same variety of sizes and shapes as our other architectural block and comes in fifteen standard and fifteen neutral colors.

### **BIM – Revit® Design Files:**

We provide Revit® design files for our common unit shapes & sizes, including the family of finishes and colors– by shape. They are free to download from our website.



950 Smile Way, York, PA 17404  
800.673.2408 | [www.yorkbuilding.com](http://www.yorkbuilding.com)



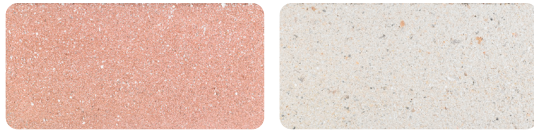
# Rustic Face Color Options

## PREMIUM:



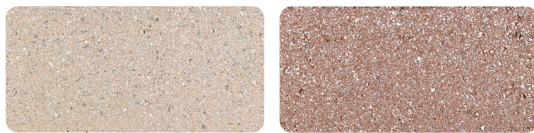
Arctic White

Kodiak



Bermuda

Parchment



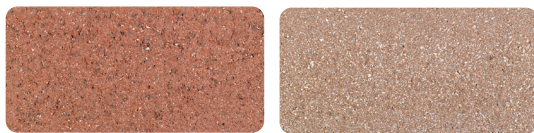
Camel

Port



Chamois

Putty



Crimson

Saddle



Gingerbread

Sahara



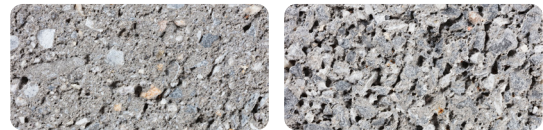
Graphite

Silver



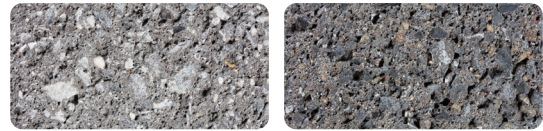
Terracotta

## NEUTRAL:



Ash

Mineral



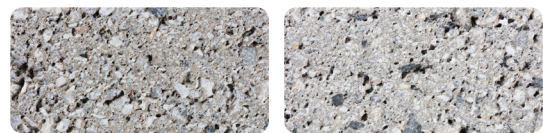
Charcoal

Mink



Flint

Mist



Fossil

Oyster



Glacier

Peppercorn



Gunmetal

Shadow



Midnight

Slate



Tundra

### Notes:

- Matching Type-S masonry cement is available for all colors shown.
- Due to the limitations of the printing process, colors shown may vary slightly from actual product. Please refer to our color sample box for accurate representation.