

SITE DATA (BUILDING A-SPROUTS)

- USE: GROCERY
- LOT AREA: 2.27 AC
- BUILDING AREA: 23,299 SQ. FT.
- PARKING REQUIRED: 76 SPACES (3.25 SPACES PER 1,000SF GROSS FLOOR AREA)
- PARKING PROVIDED: 116 SPACES (INCLUDES 5 ADA SPACES)

SITE DATA (BUILDING A.1-CHASE BANK)

- USE: BANK
- LOT AREA: 0.931 AC
- BUILDING AREA: 4,270 SQ. FT.
- PARKING REQUIRED: 14 SPACES (3.25 SPACES PER 1,000SF GROSS FLOOR AREA)
- PARKING PROVIDED: 9 SPACES DESIGNED TO BANK PARKING ONLY DURING BANK HOURS & 51 SPACES TOTAL (INCLUDES 2 ADA SPACES)

SITE DATA (BUILDING A.2)

- USE: RETAIL
- LOT AREA: 1.176 AC
- BUILDING AREA: 9,856 SQ. FT.
- PARKING REQUIRED: 32 SPACES (3.25 SPACES PER 1,000SF GROSS FLOOR AREA)
- PARKING PROVIDED: 63 SPACES (INCLUDES 3 ADA SPACES)

SITE DATA (BUILDING A.3)

- USE: 2 OR 3 STORY OFFICE
- LOT AREA: 1.91 AC
- BUILDING AREA: 28,800 SQ. FT.
- PARKING REQUIRED: 115 SPACES (4 SPACES PER 1,000SF GROSS FLOOR AREA)
- PARKING PROVIDED: 110 SPACES (INCLUDES 5 ADA SPACES)

SITE DATA (TOTAL-ALL FOUR BUILDINGS)

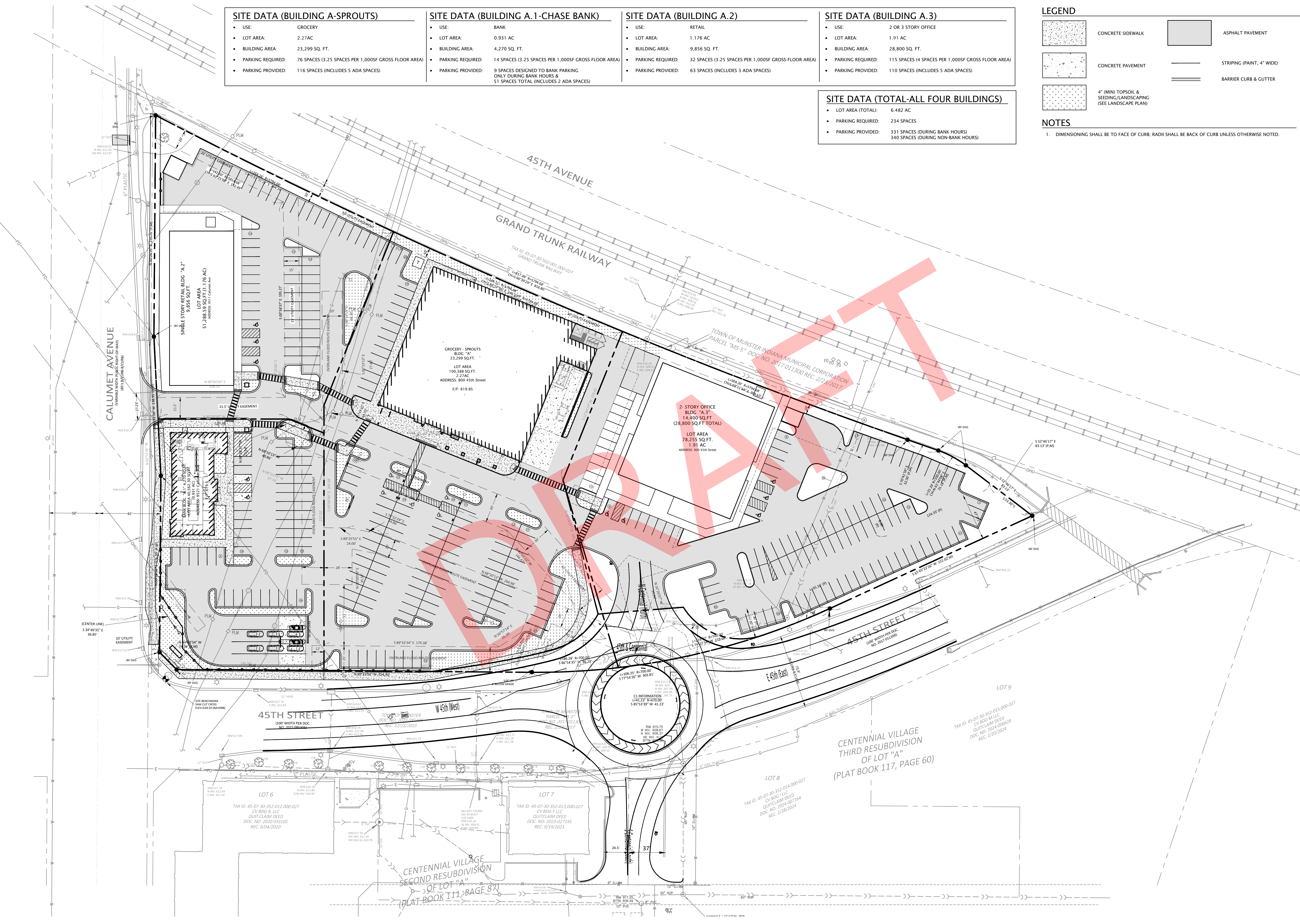
- LOT AREA (TOTAL): 6.482 AC
- PARKING REQUIRED: 234 SPACES
- PARKING PROVIDED: 331 SPACES (DURING BANK HOURS) & 340 SPACES (DURING NON-BANK HOURS)

LEGEND

- CONCRETE SIDEWALK
- CONCRETE PAVEMENT
- 4" (MIN) TOPSOIL & SEEDING/LANDSCAPING (SEE LANDSCAPE PLAN)
- ASPHALT PAVEMENT
- STRIPING (PAINT, 4" WIDE)
- BARRIER CURB & CUTTER

NOTES

- DIMENSIONING SHALL BE TO FACE OF CURB; RADII SHALL BE BACK OF CURB UNLESS OTHERWISE NOTED.



1155 Troutwine Road
Crown Point, IN 46307
P: (219) 662-7710
F: (219) 662-2740
www.dvgteam.com

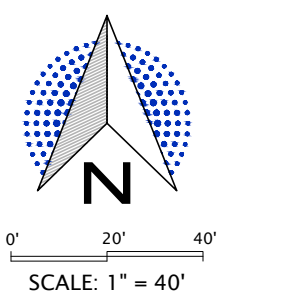
NOT FOR CONSTRUCTION

10/07/25

CV BDG A LLC
631 Killarney Drive
Dyer, IN 46311

| DATE: | REVISIONS AND NOTES: |
|-------|----------------------|
| | |
| | |
| | |
| | |
| | |

Centennial Village - Lot 11
Bldg. A-Sprouts
PUD Overall Site Plan w/ Roundabout



© COPYRIGHT 2017 DVG TEAM, INC

DESIGN BY: GMPF DATE: 10/07/25

PROJECT NO. 25-0081

C103.2

NOT FOR CONSTRUCTION