

Proposal

Reichelt
PLUMBING, INC.

P.O. Box 177

Schererville, IN 46375

Effective Date 10/7/2022

Page 1 of 2

To: Munster Public Works

Attn: Stephen Gunty

Email: sgunty@munster.org

Job Name

Job Site
508 Fisher Street
Munster, IN 46321

Estimator Lenny Witkowski

Proposal To Include:

Furnish and install all labor and materials for catch basins, trench drains, and sewer pipe per the notes and sketch

Sawcut and remove concrete to area designated by Owner

Sawcut concrete to be removed off site by Others

Patch concrete back at 7" thick

Proposal Does Not Include

Permits, meters, or fees

Excavation (Owner to Hydroexcavate)

Haul away of sawcut concrete

Granular fill (3/4" stone provided by Owner)

*Note: Please see attached spec sheet for proposed trench drain

Grates are class E rated for 134,800 pounds per foot

Section #1 Catch basin

Total of Proposal \$ 6,050.00

Initial to Accept _____

Section #2 Catch basin

Total of Proposal \$ 6,050.00

Initial to Accept _____

Section #3 Catch basin

Total of Proposal \$ 6,050.00

Initial to Accept _____

Section #4 Install cleanout

Total of Proposal \$ 1,900.00

Initial to Accept _____

Section #5 Remove existing trench drain. Install new trench drain

Total of Proposal \$ 12,400.00

Initial to Accept _____

Section #6 (Wash bay Alternate) Remove existing trench drain. Install new trench drain

Total of Proposal \$ 15,110.00

Initial to Accept _____

Voluntary Alternate #1 Install catch basin at location #5 in lieu of new trench drain

Total of Proposal \$ 6,050.00

Initial to Accept _____

One year warranty on defective material and workmanship

All work to be completed in a workmanlike manner according to standard practices. Any alteration or deviation from above specifications involving extra costs will be executed only upon written orders, and will become an extra charge over and above the estimate.

All agreements contingent upon strikes, accidents, or delays beyond our control. Owner to carry necessary insurance. Note: 1.5% interest will be added after 30 days of invoicing. Note: All above fixtures or equal will be installed. Any legal cost incurred will be paid for by the customer.

We do not include any work that is not written in this proposal.

WE PROPOSE hereby to furnish material and labor in accordance with the above specifications, for the sum of:

Payment Terms: As Job Progresses ☐ Upon Completion ☐

Authorized Signature: *Lenny Witkowski*

Signature: _____

Lenny Witkowski

Print: _____

This proposal may be withdrawn by contractor at any time prior to acceptance, and will

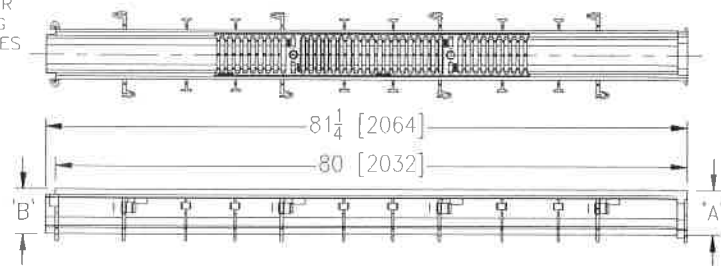
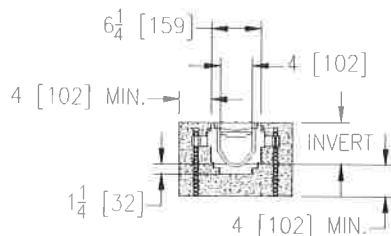
Date: _____

become void if above work is not performed within thirty (30) days of effective date.

Munster Public Works

**Z886****6-1/4 [159] WIDE REVEAL TRENCH DRAIN SYSTEM****SPECIFICATION SHEET****TAG** _____

Dimensional Data (inches and [mm]) are Subject to Manufacturing Tolerances and Change Without Notice

SPECIFYING ENGINEER IS RESPONSIBLE FOR
CONCRETE ENCASEMENT AND REINFORCING
BASED UPON APPLICATION AND LOCAL CODES

NOTE: + Actual Channel length is 81 1/4 [2064] to allow for overlap.

ENGINEERING SPECIFICATION: Zurn Z886 Channels are 80" [2032mm] long, 6-1/4" [159mm] wide reveal and have a 4" [102mm] throat. Modular channel sections are made of 0% water absorbent High Density Polyethylene (HDPE). Channels have a positive mechanical connection between channel sections that will not separate during the installation and mechanically lock into the concrete surround a minimum of every 10" [254mm]. Channels weigh less than 2.31 lbs. per linear foot [3.9 kg/m], have a smooth, 1-1/2" [38mm] radiused self cleaning bottom with a Manning's coefficient of .009 and .75% or neutral 0% built in slope. Channels have rebar clips standard to secure trench in its final location. Channels are provided with standard DGC grates that lock down with lockdown bars to the channel and is not intended for dynamic traffic loadings. Zurn 5-3/8" [137mm] wide reveal Ductile Iron Slotted Grate conforming to ASTM specification A536-84, Grade 80-55-06. Ductile Iron grate is rated class C per the DIN EN1433 top load classifications. Supplied in 20" [508mm] nominal lengths with 1/2" [13mm] wide slots, and 3/4" [19mm] bearing depth. Grate has an open area of 28.1 sq. in. per ft. [60,308 sq. mm per meter].

PREFIX OPTIONS (Check/specify appropriate options)

___ Z Six-foot, Eight-inch High Density Polyethylene (HDPE)*

SUFFIX OPTIONS (Check/specify appropriate options)**Outlet Adapters Add/Each**

___ -E1 Closed End Cap	___ -U2 2 [51] No-Hub Bottom Outlet
___ -E2 2 [51] No-Hub End Outlet	___ -U3 3 [76] No-Hub Bottom Outlet
___ -E3 3 [76] No-Hub End Outlet	___ -U4 4 [102] No-Hub Bottom Outlet
___ -E4 4 [102] No-Hub End Outlet	___ -U6 6 [152] No-Hub Bottom Outlet
___ -E6 6 [152] No-Hub End Outlet	

Frame Options

___ -AVB Aluminum Veneer Bronze Anodized Frame
___ -SVF Type 304 Stainless Steel Top Veneer Frame
___ -SW Sidewall Extension - 9 [229] High
___ -SW2 Sidewall Extension - 18 [457] High

Grate Options (Load Classifications are per DIN EN1433)

___ -BDC Black Acid Resistant Epoxy Coated Ductile Grate - Class C	___ -SWG-A Stainless Steel Wire Grate - Class A
___ -BG Galvanized Ductile Iron Bar Grate - Class C	___ -SWG-B Slip Resistant Stainless Steel Wire Grate - Class B
___ -DBG Ductile Iron Cast Bar Grate - Class C	___ -BDD Bronze Diagonal Decorative Grate - Class A
___ -DC Ductile Iron Solid Cover - Class C	___ -DCD Ductile Iron Circular Decorative Grate - Class C
___ -DGC Ductile Iron Slotted Grate - Class C *	___ -DDD Ductile Iron Diagonal Decorative Grate - Class A
___ -GDC Galvanized Ductile Slotted Grate - Class C	___ -DOG Ductile Iron Decorative Grate - Class A
___ -GG Fiberglass Grate - Class A	___ -DTW Ductile Iron Tidal Wave Grate - Class C
___ -GHPD Galvanized Heel-Proof Ductile Grate - Class B	___ -GMG Galvanized Steel Mesh Grate - Class A
___ -HPD Heel-Proof Ductile Slotted Grate - Class B	___ -HPB Heel-Proof Bronze Slotted Grate - Class A
___ -HPP Heel-Proof Polyethylene Grate - Class A	___ -HPS Heel-Proof Stainless Steel Slotted Grate - Class A
___ -LD Longitudinal Ductile ADA Grate - Class B	___ -SCD Stainless Steel Circular Decorative Grate - Class B
___ -RFG Reinforced Galvanized Steel Slotted Grate - Class B	___ -SDD Stainless Steel Diagonal Decorative Grate - Class B
___ -RPG Reinforced Galvanized Perforated Grate - Class B	___ -SMG Stainless Steel Steel Mesh Grate - Class A
___ -RFGC Reinforced Slotted Galvanized Grate - Class C	___ -SOG Stainless Steel Decorative Grate - Class B
___ -RFSC Reinforced Slotted Stainless Steel Grate - Class C	
___ -RPGC Reinforced Perforated Galvanized Grate - Class C	
___ -RPGR Reinforced Perforated Galvanized Reverse Punch Grate - Class B	
___ -RPGRC Reinforced Galvanized Perforated Reverse Punch Anti-Slip Grate - Class C	
___ -RPSC Reinforced Perforated Stainless Steel Grate - Class C	
___ -RPSRC Reinforced Perforated Stainless Steel Reverse Punch Grate - Class C	

Miscellaneous Options

___ -VP Vandal-Proof Lockdown
___ -JC Joint Connector

Decorative Grate Options (Load Classifications are per DIN EN1433)

___ -BCD Bronze Circular Decorative Grate - Class A

* Regularly furnished unless otherwise specified.

Trench No.	'A' Shallow Inv.	'B' Deep Inv.	Flow		
			(cfs)	(gpm)	(lps)
8601	3.50 [89]	4.10 [104]	0.21	93	6
8602	4.10 [104]	4.70 [119]	0.27	122	8
8603	4.70 [119]	5.30 [135]	0.34	152	10
8603N	5.30 [135]	5.30 [135]	-	-	-
8604	5.30 [135]	5.90 [150]	0.41	183	12
8605	5.90 [150]	6.50 [165]	0.48	214	13
8606	6.50 [165]	7.10 [180]	0.55	245	15
8606N	7.10 [180]	7.10 [180]	-	-	-
8607	7.10 [180]	7.70 [196]	0.62	276	17
8608	7.70 [196]	8.30 [211]	0.69	308	19
8609	8.30 [211]	8.90 [226]	0.76	339	21
8610	8.90 [226]	9.50 [241]	0.83	371	23
8611	9.50 [241]	10.10 [257]	0.90	403	25
8612	10.10 [257]	10.70 [272]	0.97	435	27
8612N	10.70 [272]	10.70 [272]	-	-	-
8613	10.70 [272]	11.30 [287]	1.04	467	29
8614	11.30 [287]	11.90 [302]	1.11	498	31
8615	11.90 [302]	12.50 [318]	1.18	530	33

___ -SWG-A	Stainless Steel Wire Grate - Class A
___ -SWG-B	Slip Resistant Stainless Steel Wire Grate - Class B
___ -BDD	Bronze Diagonal Decorative Grate - Class A
___ -DCD	Ductile Iron Circular Decorative Grate - Class C
___ -DDD	Ductile Iron Diagonal Decorative Grate - Class A
___ -DOG	Ductile Iron Decorative Grate - Class A
___ -DTW	Ductile Iron Tidal Wave Grate - Class C
___ -GMG	Galvanized Steel Mesh Grate - Class A
___ -HPB	Heel-Proof Bronze Slotted Grate - Class A
___ -HPS	Heel-Proof Stainless Steel Slotted Grate - Class A
___ -SCD	Stainless Steel Circular Decorative Grate - Class B
___ -SDD	Stainless Steel Diagonal Decorative Grate - Class B
___ -SMG	Stainless Steel Steel Mesh Grate - Class A
___ -SOG	Stainless Steel Decorative Grate - Class B

MADE in the U.S.A. (Load Classifications are per DIN EN1433)

___ -AWG	Aluminum Wire Grate - Class A
___ -DGC-USA	Ductile Iron Slotted Grate - Class C (Substitute DGE-USA)
___ -FG	Fabricated Galvanized Steel Slotted Grate - Class A
___ -FS	Fabricated Stainless Steel Slotted Grate - Class A
___ -GDC-USA	Galvanized Ductile Slotted Grate - Class C
___ -PG	Perforated Galvanized Steel Grate - Class A
___ -PGR	Galvanized Perforated Reverse Punch Anti-Slip ADA Grate - Class A
___ -PPC	Plastic Perforated Grate - Class C
___ -PS	Perforated Stainless Steel Grate - Class A
___ -SC	Fabricated Stainless Steel Solid Cover - Class A

USA Miscellaneous Options

___ -DB Bottom Dome Strainer

Decorative MADE in the U.S.A. (Load Classifications are per DIN EN1433)

___ -BZ	Bronze Decorative Grate - Class A
___ -NBZ	Nickel Bronze Decorative Grate - Class A
___ -PSR	Perforated Stainless Steel Raised Grate - Class A
___ -STWG	Stainless Transverse Wire Grate - Class A

Zurn Industries, LLC | Specification Drainage Operation
1801 Pittsburgh Avenue, Erie, PA U.S.A. 16502 · Ph. 855-663-9876, Fax 814-454-7929

In Canada | **Zurn Industries Limited**
7900 Goreway Drive, Unit 10, Brampton, Ontario L6T 5W6 · Ph. 877-892-5216

www.zurn.com

Rev. AC
Date: 11/04/2019
C.N. No. 142150
Prod. | Dwg. No. Z886