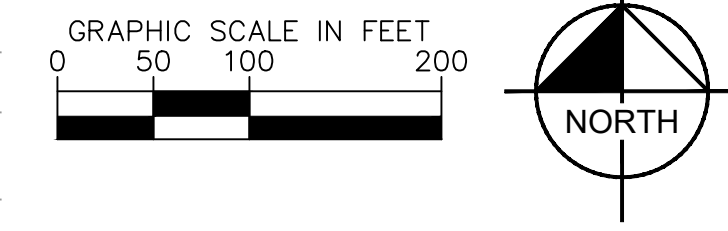
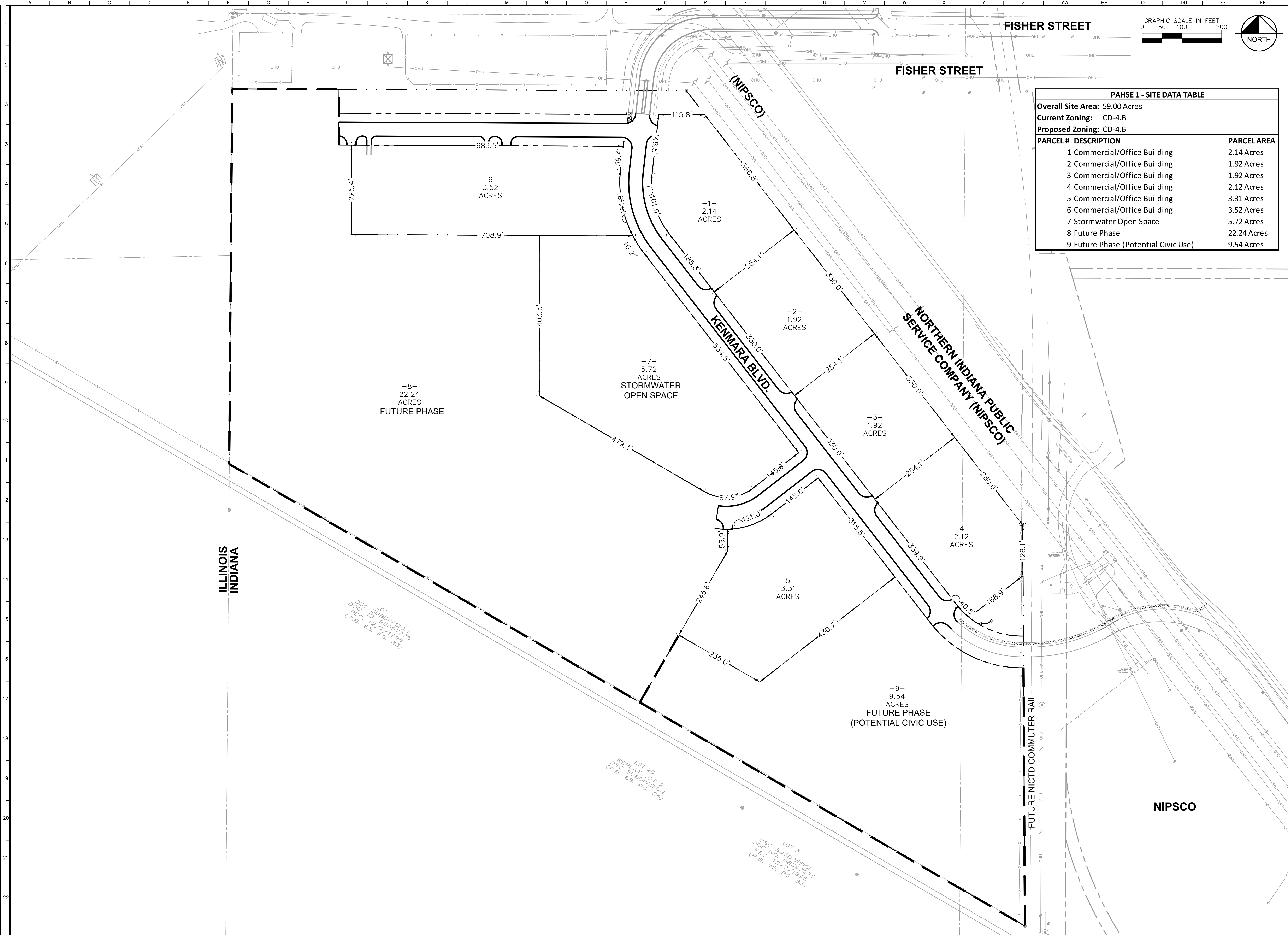


Drawing name: \\kimley-horn.com\NW\_OHS\OHS\168879000\_Saxon Res\_Munster\_IN\2 Design\CAD\PlanSheets\OHS\Entitlement SD Plans\1.0 SITE PLAN.dwg Mar 01, 2022 8:34pm By Joe Cogswell  
 This document, together with the concepts and designs presented herein, is intended only for the specific purpose and client for which it was prepared. Reuse of and improper reliance on this document without written authorization and adaptation by Kimley-Horn and Associates, Inc. shall be without liability to Kimley-Horn and Associates, Inc.



PAHSE 1 - SITE DATA TABLE		
Overall Site Area: 59.00 Acres		
Current Zoning: CD-4.B		
Proposed Zoning: CD-4.B		
PARCEL #	DESCRIPTION	PARCEL AREA
1	Commercial/Office Building	2.14 Acres
2	Commercial/Office Building	1.92 Acres
3	Commercial/Office Building	1.92 Acres
4	Commercial/Office Building	2.12 Acres
5	Commercial/Office Building	3.31 Acres
6	Commercial/Office Building	3.52 Acres
7	Stormwater Open Space	5.72 Acres
8	Future Phase	22.24 Acres
9	Future Phase (Potential Civic Use)	9.54 Acres

LOT 1  
 DSC SUBDIVISION  
 DOC NO. 98092775  
 REC. 12/7/1999  
 (P.B. 85, PG. 83)

LOT 2C  
 REPLAT LOT 2  
 DSC SUBDIVISION  
 (P.B. 89, PG. 04)

LOT 3  
 DSC SUBDIVISION  
 DOC NO. 98092775  
 REC. 12/7/1999  
 (P.B. 85, PG. 83)

No.	REVISIONS	DATE	BY
© 2021 KIMLEY-HORN AND ASSOCIATES, INC. 4251 WINFIELD ROAD, SUITE 600 PHOENIX, AZ 85044-4550 WWW.KIMLEY-HORN.COM			
SCALE:	DESIGNED BY: TRE	DRAWN BY: AD	CHECKED BY: WAW
SAXON PARTNERS			
COMMERCIAL SUBDIVISION PLAN			
LCC-SAXON INDIANA TRACT 1 <small>TOWN OF MUNSTER, IN</small>			
ORIGINAL ISSUE: 10/9/2020			
KHA PROJECT NO. 168879000			
SHEET NUMBER			
CSP 1.0			