

March 1, 2022

Mark Heintz, CPRP  
Parks and Recreation Department  
Town of Munster  
1005 Ridge Road  
Munster, IN 46321

RE: Request for Proposals – Architectural/Engineering Services.  
Architect's Project #22001

Mark,

I want to thank you in advance for the opportunity to present our qualifications, to present our preliminary design concepts and to work with you. I've really enjoyed working with you in the past.

I have provided our Firm Profile that includes the information you are requesting regarding our firm's history, staff resume's, experience, consultants and references.

As a current Member, past Chairman for many years and the Chairman of the Construction Committee for the last 23+ years for the Hammond Port Authority I have been involved with the design and construction of the Lost Marsh Golf Course Clubhouse along with millions of dollars of other substantial projects. I was also the Architect of Record for Hammond's Wolf Lake Park Splash Pad Facility that included a Concession Facility. Our firm was involved in renovations to the Briar Ridge Golf Course Clubhouse as well. We also completed an ADA Assessment of the entire Centennial Park a few years ago so we are very familiar with the Park.

The specific list of the most comparable projects we have recently completed are the following:

- New Concession and Restroom Facility at Rohrman Park for the Town Schererville Parks and Recreation Department  
Total Architectural Fee \$11,000  
Completed in November 2019
- Addition & Renovations to the Existing Concession and Restroom Facility at Imagination Glen Park in for the City of Portage Parks and Recreation  
Total Architectural Fee \$18,000 (\$5000 Preliminary Design & \$13,000 to Completion)  
Completed in February 2020
- New Concession and Restroom Facility that included a Second Floor Scoring/Observation area and Sports Lighting for four fields at Central Park for the Town of Dyer's Parks and Recreation Department  
Total Architectural Fee \$55,000  
Completed in October 2021

Please refer to our Firm Profile for Pictures and Renderings for the above.

As you know we met on site to familiarize myself with your current needs and vision and have included our two preliminary design options for two new facilities at the "top of the hill". One building is the Pro-Shop and Concession Building and the other is the golf Cart Storage Building that also can serve as covered tee boxes for the golf range. We also have included an option for additional shelter spaces for golf outing events. We look forward to presenting our designs in an electronic virtual walk through of the site and buildings at your convenience.

We think the design process that we will orchestrate that will include all appropriately designated staff and town officials is critical to a project's success. We feel this highly valuable. Through this design process we will engage the end users to help us design the most successful option. This will take a few meetings to get

through the preliminary design process. Once that is complete we will develop the design further until we have an acceptable design solution. Once that is complete we will move on to the Construction Documents phase of the project, bidding, award of the contract and subsequent construction.

Once we start the design process we expect to be complete with that in a couple months with the Construction documents phase taking another month, an additional month for bidding and a few more weeks to award the project and have contracts signed. So if we get started soon construction may start as soon as July of this summer.

As far as our fees go we typically will be in the 6%-7% range of the cost of construction range but can offer a fixed lump sum fee to include all services once the design is complete. We typically do not have any additional reimbursable expenses what so ever.

Our hourly rates and costs for deliverables for any additional or out of agreed upon scope are the following:

Principal – Tom Kuhn	\$175.00 per hour
Project Manager	\$150.00 per hour
Senior Draftsman/CAD Operator	\$125.00 per hour
Draftsman/CAD Operator	\$ 90.00 per hour
Student Intern/Cad Operator	\$ 50.00 per hour
Office Manager/Secretary	\$ 60.00 per hour
Large Format Scanning - B & W	\$ 0.50 per square foot of paper
Large Format Scanning - Color	\$ 0.60 per square foot of paper
Large Format Prints – 20# Bond B & W	\$ 0.50 per square foot of paper
Large Format Prints – 20# Bond Color	\$ 0.65 per square foot of paper
Large Format Prints – Photo Quality Color	\$ 1.50 per square foot of paper
Small Format 11"X17" Scanning	\$ .10 per copy
Small Format 11"X17" Scanning	\$ .20 per copy
Small Format 8 1/2"X11" Copies - B & W	\$ .10 per copy
Small Format 8 1/2"X11" Copies - Color	\$ .35 per copy
Small Format 11"X17" Copies - B & W	\$ .20 per copy
Small Format 11"X17" Copies - Color	\$ .70 per copy
Outside Consultants	1.15 times our cost

As you know the construction industry is very volatile now with availability of materials and their costs. Based upon our two design options we think an appropriate preliminary budget for the cost of construction would range from \$1,500,000 to \$1,900,000.

Please let me know if you need further assistance or have any questions in regard to this proposal. I am also available to discuss this proposal at your earliest convenience if you require. Once again, I appreciate the opportunity to submit our proposal to you and the opportunity to work with you.

Respectfully submitted,



Thomas E. Kuhn, AIA, CSI, ALA

Office (219) 322-5950

Cell (219) 741-1849

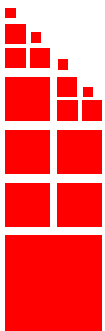
Email: [tkuhn@cskarchitects.com](mailto:tkuhn@cskarchitects.com)

X:\Munster - Town of\22001 Centennial Park Golf Pro Shop\Correspondence\Proposals\2022-03-01 Proposal.docx



**C S K ARCHITECTS, P. C.**

## **FIRM PROFILE**



6919 W LINCOLN HIGHWAY, CROWN POINT, IN 46307  
219.322.5950 [www.cskarchitects.com](http://www.cskarchitects.com)

## CSK ARCHITECTS, P.C.

---

CSK Architects, P.C. has been providing architectural services since its establishment in September of 1958 in Hammond, Indiana. The original firm was Carras & Associates until 1982 when it became Carras-Szany & Associates. In May of 1999 the firm was reorganized and became Carras-Szany-Kuhn & Associates, P.C. In July of 2017 the firm reorganized again and became CSK Architects, P.C. Since the inception of the firm, we have provided active and continual service to Northwest Indiana and beyond with projects in Michigan, Florida, North Carolina, Illinois, North Dakota, Kentucky, Ohio and areas within our state. To better serve our requirements, we relocated to larger facilities in Schererville, Indiana in April of 1992.

Since our inception as a firm, we have offered complete services in architecture, site planning, facilities programming, cost analysis, construction administration, interior design and furniture specification.

We also provide services in landscape architecture, mechanical engineering and electrical engineering.

Additionally, our firm offers construction documents prepared on CADD with state of the art computer equipment and software to increase the quality of our production. Our staff utilizes a network of computer stations so that specifications, project management, and construction documents can be thoroughly integrated. Our architectural design experiences are extremely varied and encompass virtually all phases of today's architectural needs.



---

*CSK ARCHITECTS, P.C.*

Throughout these years, we have gained extensive experience and expertise in a great variety of building types including commercial, religious, institutional, educational, industrial, residential and multi-family housing. We are dedicated to designing buildings that are current, aesthetically pleasing, fresh in their approach, compatible with their environment and provide the owner with the most appropriate use of their land and facilities for the life of the building. We attempt to incorporate into our buildings the most current technology available to us at the time. We are always aware of the building costs, owner's financial criteria and the total economics of the project.

Our prime goal is to provide the owner with the best possible building within their budget through creative, imaginative architecture and good management, using that particular solution that best suits each individual project and task.

We endeavor to provide our clients with the best possible architectural services that we can. By doing that, we are able to serve our clients, end users and our community.



# STAFF PROFILE

---

CSK ARCHITECTS, P.C.

## **Thomas E. Kuhn AIA, CSI, ALA**

President

Secretary

Treasurer

### ***Education:***

Ball State University  
College of Architecture and Planning  
Bachelor of Architecture  
Bachelor of Science in Environmental Design  
Purdue University  
Entrepreneurship Program E-10

### ***Architectural Registrations:***

Indiana, Illinois, Kentucky, Ohio and Michigan  
NCARB (National Certification)  
State of Indiana, Licensed Interior Designer

### ***Professional Associations:***

American Institute of Architects  
Construction Specification Institute  
Professional Member  
Construction Document Technologist (CDT)  
Association of Licensed Architects  
Indiana Association of Building Officials  
Indiana Association of School Business Officials  
Business Associate Member

### ***Governmental Appointment:***

City of Hammond,  
Historic Preservation Commission 1991-1998  
Hammond Port Authority 1998 - Present  
Past Chairman of the Board  
Past/Current Chairman of the Construction  
Committee

---

# STAFF PROFILE

---

CSK ARCHITECTS, P.C.

## **Thomas E. Kuhn AIA, CSI, ALA**

*President*

*Secretary*

*Treasurer*

### **Community Service:**

Calumet Council Boy Scouts of America  
Past Board of Directors & Properties Committee  
Silver Beaver Award Recipient 2012  
Tri-Town YMCA, Past Board of Managers  
Jaycees - Hammond Chapter, Past President  
Lakeshore Chamber of Commerce, Member  
Crossroads Chamber of Commerce, Member  
Portage Chamber of Commerce  
Merrillville Rotary Club, Past President  
South Shore Arts, Patron Member  
Save the Dunes, Council Member  
Towle Community Theater, Theater Patron  
Meals on Wheels, Volunteer  
Lake County Agricultural Society, Inc., Member  
Trout Unlimited, Member  
Lake County Advancement Committee, Member  
Sierra Club, Member  
Ducks Unlimited, Member

---



# STAFF PROFILE

---

CSK ARCHITECTS, P.C.

## **R. Scott Goodwin AIA, LEED AP**

*Architect*

### ***Education:***

Ball State University  
College of Architecture and Planning  
Bachelor of Architecture  
Bachelor of Science in Environmental Design

### ***Architectural Registrations:***

States of Indiana and Illinois  
NCARB (National Certification)  
State of Indiana, Licensed Interior Designer

### ***Professional Associations:***

American Institute of Architects  
LEED Accredited Professional  
Past Lake County Indiana  
Licensed General Contractor  
Former Indiana Licensed Real Estate Agent

### ***Teaching Position:***

Past Instructor, Purdue University Calumet  
Architectural Engineering Technology

### ***Community Service:***

Past Lowell Rotary  
Past Merrillville Kiwanis Club - Past President  
Past Merrillville High School Theatre Group  
Set Construction Volunteer

---



# STAFF PROFILE

---

CSK ARCHITECTS, P.C.

## **Jeremy S. Gilbert, CSI**

*Project Manager*

*Information Systems and*

*Computer Systems Manager*

### ***Education:***

Purdue University Calumet

Bachelor of Science

Construction Management Engineering Technology

Purdue University North Central

Associate in Applied Science

Architectural Technology

Associate in Applied Science

Civil Engineering Technology

### ***Certifications:***

Construction Specification Institute

Construction Document Technologist

### ***Professional Associations:***

Construction Specification Institute

Professional Member

---

# STAFF PROFILE

---

CSK ARCHITECTS, P.C.

## **Jeff Napiwocki**

*Architectural Technician*

### ***Education:***

Purdue University Calumet  
Associate in Applied Science  
School of Professional Studies  
- Construction Technology Department

## **Jorge Diaz**

*CAD Operator*

### ***Education:***

Robert Morris College  
Associate in Applied Science CAD/Drafting Design  
Bachelor of Professional Science  
Architectural Technology

---

# STAFF PROFILE

---

CSK ARCHITECTS, P.C.

## **Mack Pearson**

*Apprentice*

### ***Education:***

Ball State University  
College of Architecture and Planning  
Bachelor of Architecture

## **Jacob Mavity**

*Apprentice*

### ***Education:***

Ball State University  
College of Architecture and Planning  
Bachelor of Architecture

## **Kelly Kuhn**

*Administrative Specialist*

### ***Education:***

Indiana University Northwest Kokomo, Indiana

Franchise Business Consultant  
Operations Training Instructor  
Human Resource Manager

### ***Certification:***

Serv Safe Instructor

---

# COMMERCIAL FINANCIAL

CSK ARCHITECTS, P.C.

## **Bank Calumet**

*(Currently First Midwest Bank)*

### **New Branch Buildings:**

Merrillville Office - 1976

Schererville Office - 1978

Dyer Office - 1980

(Addition & Renovation 2004)

### **New Branch Building**

Highland Grove Office

2 Story - 10,000 sq. ft.

Highland, Indiana

Completed 1996 (Addition 2003)

### **New Drive-Up Facility**

Park Forest, Illinois

Completed 2001

### **Addition & Renovations**

Glen Park Office

Completed 1994

### **New Drive-Up Facility**

Hammond, Indiana

Completed 1998

### **Complete Renovations to Main Floor & Main Office in Hammond**

Completed 1984

### **Addition & Renovations to Highland Office**

Completed 1978 & 1984



Bank Calumet, Highland Grove Branch  
Highland, Indiana



Bank Calumet, Dyer Branch  
Dyer, Indiana  
Preliminary Rendering

# **COMMERCIAL** FINANCIAL

CSK ARCHITECTS, P.C.

---

## **Mercantile National Bank**

(Currently BMO Harris Bank)

### **New Branch at Cline Commons**

Schererville, Indiana

Completed 2003

### **New Valparaiso South Branch Office**

Valparaiso, Indiana

Completed 2001

### **Renovations to Merrillville Branch**

2nd Floor Build-Out

Completed 1996

### **Renovations of Main Office**

Hammond, Indiana

45,000 sq. ft.

Completed 1986

Third Floor Renovation

Completed 1995

### **New Branch Facility**

Robertsdale (Hammond), Indiana

Completed 1992

Robertsdale Office Addition

Completed 1996

### **New Branch Office at Chandana Pointe**

Valparaiso, Indiana

3,000 sq. ft.

Completed 1992

### **Renovations to Calumet Avenue Branch**

Hammond, Indiana



Mercantile National Bank Office at Cline Commons  
Schererville, Indiana

---

# **COMMERCIAL** FINANCIAL

CSK ARCHITECTS, P.C.

## **INB National Bank N.W.**

(Currently Chase Bank)

### **New Branch Building**

Lafayette, Indiana

2,500 sq. ft.

Completed 1988

### **New Branch Building**

Schererville, Indiana

Completed 1986

## **Centier Bank**

### **New Drive-Up Facility**

Merrillville, Indiana

Completed 1999

### **Interior Renovations**

Whiting, Indiana

Completed 1999



INB Bank, Schererville Branch  
Schererville, Indiana

## **NIPSCO Industries Federal Credit Union**

### **New Office Building**

8580 Virginia Street

Merrillville, Indiana

Completed 1994



NIPSCO Industries Federal Credit Union  
Merrillville, Indiana



# **COMMERCIAL** FINANCIAL

---

CSK ARCHITECTS, P.C.

## **Indiana Federal Bank**

### **New Branch Bank & Office Facility**

45th Avenue

Highland, Indiana

6,600 sq. ft

Completed 1993

## **Liberty Savings & Loan**

### **Drive-up Addition & Interior Renovations**

Whiting, Indiana

Completed 1988



Indiana Federal Bank  
Highland, Indiana

---



# **COMMERCIAL** OFFICE

CSK ARCHITECTS, P.C.

## **Construction Advancement Foundation**

### **New Construction Safety Institute Building**

Indiana 249 at I-94 - Southport Road

Portage, Indiana

7,000 sq. ft.

Completed 2013

## **New C.A.F. Office Building**

Indiana 249 at I-94 - Southport Road

Portage, Indiana

9,000 sq. ft.

Completed 2000

## **Nottingham Square Office Building**

### **New Rental Office Building**

Schererville, Indiana

12,000 sq. ft.

## **99 Limited Partnership**

### **New Office Building**

Merrillville, Indiana

10,000 sq. ft.

## **Bowman, Heintz, Boscia & McPhee**

### **Addition & Renovations to Office Building**

21 East 86th Avenue

Merrillville, Indiana

## **The Williamsburg**

### **New 3 Building Office Complex**

Merrillville, Indiana

100,000 sq. ft. total

Completed 1988



Office Building for Construction Advancement Foundation  
Portage, Indiana  
Main Lobby Interior



Office Building for Construction Advancement Foundation  
Portage, Indiana

# COMMERCIAL OFFICE

---

CSK ARCHITECTS, P.C.

## **Dyer Animal Clinic**

### **Addition & Renovations**

Dyer, Indiana  
Completed 2003

## **American Industrial Machinery**

### **New Office Building**

4015 West 83rd Place  
Merrillville, Indiana  
5,000 sq. ft.  
Completed 1999

## **Laszlo Kaves & Co., P.C.**

### **New Professional Office Building**

200 East 80th Place  
Merrillville, Indiana  
12,000 sq. ft.  
Completed 1995

## **Welsh Oil, Inc.**

### **Addition to Office Building**

800 East 86th Avenue  
Merrillville, Indiana  
7,000 sq. ft.  
Completed 1995

## **Catholic Charities**

### **New Office Building**

East Chicago, Indiana  
Completed 1994



Dyer Animal Clinic  
Dyer, Indiana  
Preliminary Rendering

---

**Grimmer Construction Company**

Shop Building  
Office Addition to Shop Building  
Completed 2000  
\$625,000

Office Addition to Grimmer Construction  
Completed 2016  
\$616,000

Spring Prairie Office Complex Various  
Build-Outs  
Happy Days Day Care 2011  
Pure Power Hot Yoga Salon 2013



TradeWinds Services  
Merrillville, Indiana

**TradeWinds Services**

New Headquarters Facility  
3195 East 83rd Place  
Hobart, Indiana  
Completed 2014  
\$3,144,600

**Crossroads Animal Hospital**

New 24-Hour Veterinary Hospital  
US 30  
Schererville, Indiana  
Completed 2019



# **COMMERCIAL** RECREATION

---

CSK ARCHITECTS, P.C.

## **Briar Ridge Country Club**

**Addition to Dining/Cocktail Lounge**

**Renovations to Banquet Area/ Women's Lounge**

Dyer, Indiana

Completed 2004

## **Broadmoor Country Club**

**Main Building**

Merrillville, Indiana

Completed 1988

## **Olympia Lanes**

**New 40 Lane Bowling Facility**

Hammond, Indiana

Completed 1985

## **Stardust Bowl III**

**New 48 Lane Bowling Facility**

Dyer, Indiana

Completed 1979

## **Stardust Bowl II**

**New 60 Lane Bowling Facility**

Merrillville, Indiana

Completed 1976

## **Hammond Port Authority**

Concession Stand, Toilets, Lockers and

Splash Pad at Wolf Lake

Completed 2014

## **City of Hammond**

Gymnasium Upgrades and

Concession Stand Renovations at

Hammond Civic Center

Completed in 2019

## **North Township, Lake County**

Wicker Park Outdoor Exercise Facility

Completed 2016

Wicker Park New Driving Range Building and

Replacement of the Tee Boxes

Completed in 2019

---

# **COMMERCIAL** RECREATION

---

CSK ARCHITECTS, P.C.

## **Crossroads YMCA**

1450 S. Court Street  
Crown Point, Indiana

Addition and Renovations to the  
Hammond Family YMCA  
7322 Southeastern Avenue  
Hammond, Indiana  
Completed 2019  
\$2,500,000

Renovations to Griffith YMCA  
201 N. Griffith Boulevard  
Griffith, Indiana  
Complete  
\$5,000

---

**City of East Chicago**

East Chicago, Indiana

East Chicago Community Center  
3623 Guthrie Street  
East Chicago, Indiana

Fitzsimmons Redevelopment for the  
City of East Chicago  
Mixed use Multi-Family / Commercial  
Completed 2019



**Meals on Wheels**

**New Office & Support Facility**

Merrillville, Indiana

12,000 sq. ft.

Completed 2006

\$1,500,000



Meals on Wheels  
Merrillville, Indiana

**Sandridge Community Center**

**Gymnasium and Office Addition**

Calumet City, Illinois

15,000 sq. ft.

Completed 1995

\$1,000,000

**Sandridge Community Center**

**Lap Pool Addition**

Calumet City, Illinois

Completed 1998

---



# **COMMERCIAL** COMMUNITY

CSK ARCHITECTS, P.C.

## **Katherine House Boys & Girls Club**

### **New Facility**

137th & Deodor  
East Chicago, Indiana  
18,000 sq. ft.  
Completed 1990  
\$1,200,000

### **Large Scale Renovations - 2019**

Completed 2019



Hammond Boys & Girls Club  
Hammond, Indiana

## **Hammond Boys & Girls Club**

### **New Facility**

Calumet Avenue & Eaton Street  
Hammond, Indiana  
22,000 sq. ft.  
Completed 1994  
\$1,400,000

## **Calumet Memorial Park District**

### **New Concession Stand; Public Toilets & Administrative Support Facility**

Family Fun Center at Calumet Memorial Park  
Calumet City, IL



Calumet Memorial Park District  
Family Fun Center West Elevation

## **Boy Scouts of America - Calumet Council**

### **New Shower/Toilet Facility**

Berrien Springs, Michigan  
Camp Betz

# **COMMERCIAL** SUPERMARKETS

CSK ARCHITECTS, P.C.

---

## **Strack & Van Til**

### **Complete New Facade & Interior Renovations**

U.S. 41 & U.S. 30  
Schererville, Indiana  
Completed 2003



Strack & Van Til  
Schererville, Indiana  
Preliminary Rendering

## **New Entry Facade**

7201 Taft Street  
Merrillville, Indiana  
Completed 1994 & 2003



Strack & Van Til  
Merrillville, Indiana

## **Strack & Van Til Mega Mart**

Conversion of original May's Store to  
Grocery Store with Additions  
Completed 1984

---

**Strack & Van Til**

**New Grocery Store**

Broadway Avenue & 109th  
Crown Point, Indiana  
80,000sq. ft.  
Completed 2006

**New Grocery Store**

US 41  
St. John, Indiana  
72,000 sq. ft.  
Completed 2006



Strack & Van Til  
Crown Point, Indiana

**Ultra Foods**

**Interior Renovations**

Completed 1996

**Exterior Renovations**

Completed 2003

8401 Indianapolis Boulevard  
Highland, Indiana  
100,000 ft<sup>2</sup>

**Addition & Renovations**

6110 Broadway  
Merrillville, Indiana  
82,000 sq. ft.  
Completed 1999 & 2003



Strack & Van Til  
Crown Point, Indiana  
Interior View

**Town & Country Supermarkets**

**Addition & Interior Renovations**

Portage, Indiana

60,000 sq. ft.

Completed 2000

**Interior Renovations**

Valparaiso, Indiana

58,000 sq. ft.

**Addition**

Valparaiso, Indiana

11,000 sq. ft.

Completed 1997

**Reliable Foods**

*(Formerly Pay Low Foods)*

**Addition and Full Renovations**

165th Street

Hammond, Indiana

Completed 1978

**Meadows Shopping Center**

**Renovations of Former Town & Country Supermarket**

**Space to Complete Shopping Facility**

Portage, Indiana

60,000 sq. ft.

Completed 2000

---



# **COMMERCIAL** RETAIL

CSK ARCHITECTS, P.C.

---

## **Mid American Mailers**

### **Addition & Renovations**

Hammond, Indiana

Completed 1986

## **Standard Liquors**

### **New Office & Warehouse**

Several Additions - 1968, 1970 & 1984

## **Stilnovich & Wiatrolik Funeral Home**

*(Currently Calumet Park Cemetary Funeral Home)*

### **New Facility**

Taft Street

Merrillville, Indiana

Completed 1983

## **Ad Craft Printers**

### **New Facility**

Merrillville, Indiana

Completed 1975

## **Zip Foods**

### **New Facility**

Michigan City, Indiana

Completed 1975



Stilnovich & Wiatrolik Funeral Home  
Merrillville, Indiana

---

# **COMMERCIAL** RETAIL

CSK ARCHITECTS, P.C.

## **Beacon Hill**

### **New Retail Center**

109th & Broadway  
Crown, Point, Indiana  
Completed 2006

## **Reichelt Plumbing**

### **New Office/Warehouse Building**

Kennedy Avenue  
Schererville, Indiana  
Completed 1993

## **Homestead Plaza**

### **Exterior Renovations**

Kennedy Avenue  
Highland, Indiana  
Completed 1993

## **Groen Furniture**

### **Addition and Renovations**

Dyer, Indiana  
Completed 1993

## **Hart Street Center**

### **New Six Unit Retail Building**

Phase 1 of 3 Buildings  
Matteson Street  
Dyer, Indiana  
Completed 1990

## **Thornapple Plaza**

### **New Retail Center**

US 30  
Valparaiso, Indiana  
Completed 1988  
Box Office Video - 1989; Dairy Queen - 1990  
and Several other tenant space designs

## **Greentree Plaza**

### **New Retail Shopping Mall**

US 30  
Merrillville, Indiana  
Completed 1987



Beacon Hill  
Crown Point, Indiana

# **COMMERCIAL** AUTO & TRUCK SERVICE

---

CSK ARCHITECTS, P.C.

## **Stan Mize Towne & Countree**

(Currently Napleton Auto Works)

### **Addition & Renovations**

New Showroom, Offices, and Auto Service Facility

14,600 sq. ft.

Schererville, Indiana

Completed 1998

\$1,000,000



Stan Mize Towne & Countree Auto Dealership  
Schererville, Indiana

## **Oil Exchange**

### **New Facility**

Crown Point, Indiana

Completed 1998

## **Turbo Wash**

### **New Four Bay Automatic & Seven Bay Handwash Facility**

Highland, Indiana

Completed 1988

## **Continental Car Wash & Oil Change**

### **New Facility**

Wheaton, Illinois

Completed 1993

## **Patton Tractor & Equipment**

### **Truck & Heavy Equipment Service Building with Truck Wash**

16,000 sq. ft.

### **Renovations to Office & Warehouse**

Completed 1995

Indianapolis Boulevard

Hammond, Indiana

---



# **COMMERCIAL** AUTO & TRUCK SERVICE

---

CSK ARCHITECTS, P.C.

## **Grimmer Service**

### **Addition & Renovations**

U.S. 30  
Schererville, Indiana  
Completed 2007

## **Oil Change**

### **New Facility**

Mokena, Illinois - 1986 & 1988

## **Oil Express Inc.**

### **New Facilities**

Calumet City, Illinois	1987	Oak Lawn, Illinois	1982
Chicago, Illinois	1987	Downers Grove, Illinois	1982
Joliet, Illinois	1986	Calumet City, Illinois	1982
Chicago, Illinois	1984	Glenwood, Illinois	1982
Highland, Indiana	1983	Merrillville, Indiana	1981
South Holland, Illinois	1982	Chicago, Illinois	1980

## **Portage Car Wash**

### **New Facility**

Portage, Indiana  
Completed 1985

## **Jiffy Lube - Oil Change**

### **New Facilities**

Oak Forest, Illinois - 1985  
Chicago, Illinois - 1984  
Calumet City, Illinois - 1983

## **Sooper Lube. Oil Change**

### **New Facilities**

Villa Park, Illinois - 1982  
Valparaiso, Indiana - 1982

## **3001 Lube-N-Wash**

### **New Facility**

Merrillville, Indiana  
Completed 1987

## **Service Auto Parts**

### **Addition & Renovations**

Chicago Avenue  
Hammond, Indiana  
Completed 1978

## **Hardings Inc.**

### **Addition and Renovations**

Lowell, Indiana  
Completed 1975

---

# GOVERNMENTAL

CSK ARCHITECTS, P.C.

## City of Hammond

### **New Entertainment Pavilion for: Wolf Lake Memorial Park**

7,440 sq. ft.

Hammond, Indiana

Completed 2010

\$2,500,000

Recipient

**American Council of Engineering Companies of Indiana**

2011 Engineering Excellence Awards Competition

Honor Award



New Entertainment Pavilion for Wolf Lake Park  
Hammond, Indiana

*Photo by: Jeff Lendrum*



New Entertainment Pavilion for Wolf Lake Park  
Hammond, Indiana

*Photo by: Jeff Lendrum*



New Entertainment Pavilion for Wolf Lake Park  
Hammond, Indiana

*Photo by: Jeff Lendrum*

# GOVERNMENTAL

CSK ARCHITECTS, P.C.

## City of Hammond

### **New Criminal Justice Facility**

60,000 sq. ft.

Hammond, Indiana

Completed 2002

\$10,000,000



Hammond Criminal Justice Facility  
Hammond, Indiana  
Lobby Interior



Hammond Criminal Justice Facility  
Hammond, Indiana  
Main Entry



Hammond Criminal Justice Facility  
Hammond, Indiana

# GOVERNMENTAL

CSK ARCHITECTS, P.C.

## **Lake County Public Library**

### **Eight Year Building & Renovation Plan**

(2004-2012)

4 New Branch Libraries

Renovate Branch Libraries

Addition & Renovation to Central Library

\$30,000,000 Total

### **New Calumet Township Library**

Griffith, Indiana

Completed 2013

\$3,600,000

### **Addition & Renovations to Central Library**

Merrillville, Indiana

Completed 2013

\$10,000,000

### **Renovations to Highland Library**

Highland, Indiana

Completed 2009

\$700,000

### **Addition & Renovations to Munster Library**

Munster, Indiana

Completed 2008

\$1,000,000

### **New Lake Station/New Chicago Library**

Lake Station, Indiana

Completed 2007

\$3,500,000

### **New Cedar Lake Library**

Cedar Lake, Indiana

Completed 2006

\$4,000,000

### **New St. John Library**

St. John, Indiana

Completed 2005

\$3,000,000



Lake County Public Library  
Dyer/Schererville Branch  
Interior View



Lake County Public Library  
St. John Branch  
St. John, Indiana



# GOVERNMENTAL

CSK ARCHITECTS, P.C.

## **Lake County Public Library** **Renovations to Central Office**

Completed 1998

\$2,000,000

## **New Dyer/Schererville Branch**

Schererville, Indiana

26,500 sq. ft.

Completed 1994

\$3,000,000

## **Addition & Renovations to Griffith Branch**

Griffith, Indiana

Completed 1995

\$300,000



Lake County Public Library  
Dyer/Schererville Branch  
Schererville, Indiana  
Entry Detail



Lake County Public Library  
Dyer/Schererville Branch  
Schererville, Indiana

# GOVERNMENTAL

---

CSK ARCHITECTS, P.C.

## **Indiana National Guard**

### **New Readiness Center**

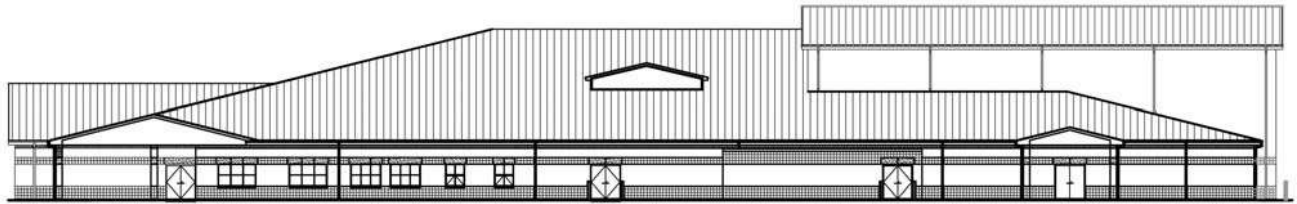
Gary/Chicago Airport

Gary, Indiana

42,000 sq. ft.

Completed 2008

\$10,000,000



Indiana National Guard Readiness Center

Gary, Indiana

Northeast Elevation

## **Town of St. John**

### **New Public Safety Facility**

Completed 2007

### **Addition & Renovations to Town Hall**

Completed 2006

### **New Public Works Complex**

Completed 2005



St. John Public Safety Facility

St. John, Indiana

---

# GOVERNMENTAL

---

CSK ARCHITECTS, P.C.

## **Town of Highland**

### **Main Square Improvements**

Gazebo Replacement & Expansion

New Public Restroom & Concession Facility

Highland, Indiana

Completed 2007



Town of Highland Main Square Improvements  
Highland, Indiana  
Gazebo



Town of Highland Main Square Improvements  
Highland, Indiana  
New Public Restroom & Concession Facility

---



# GOVERNMENTAL

---

CSK ARCHITECTS, P.C.

## **Town of Dyer**

### **New Public Works Maintenance, Equipment Storage, Office and Salt Storage Buildings**

Dyer, Indiana

Completed 2001

\$1,800,000

## **City of Hammond**

### **New Police Communications Building Dispatch and 911 Facility**

Hammond, Indiana

Completed 1996

\$453,000

## **U.S. Postal Service**

### **New Remote Encoding Center**

Gary, Indiana

Completed 1995

\$3,000,000



Dyer Public Works  
Dyer, Indiana

## **City of Hammond**

Hammond Park Department

Renovations of their outdoor swimming pools,  
facilities in twelve public parks including  
tennis courts, baseball fields, and basketball  
courts and main recreational facility and  
Hammond Civic Center

Hammond, Indiana

Completed 1982

## **City of Hammond**

Various Reroofing Projects

Hammond, Indiana

Completed 1980

\$1,000,000

## **Town of Schererville**

### **Renovations to Existing Town Hall**

Schererville, Indiana

Completed 1980

## **City of Hammond**

### **New Truck Wash and Salt Storage Facility**

Hammond, Indiana



# **GOVERNMENTAL**

---

CSK ARCHITECTS, P.C.

## **Lake County Government Center**

Lake County Board of Commissioners  
2293 N. Main Street  
Crown Point, Indiana 46307

### **Various Projects at Lake County Government Center**

HVAC Replacement of Rooftop Units on the Jail Addition  
\$1,250,000

LED Lighting Replacement of Light Fixtures with New LED  
\$196,500

Electrical Improvements and Renovations for VOIP at the  
Lake County Hammond Courthouse Building  
\$165,000

HVAC Renovations in the Penthouse  
Coils Installation and Fan Replacements  
\$1,500,000

Renovations to the Lake County Government Center  
\$1,480,000

Security Barriers at the Lake County Government Center  
\$650,000

Building Automation System at the Lake County Government Center  
\$2,500,000

Renovations to the West Wind Building  
Public Defender's Office - 6th Floor  
\$480,000

Hammond Courthouse  
Emergency Generator Installation  
\$165,000

Renovations to the Commissioner's Office  
\$500,000

Paving Improvements at the Lake County Government Center  
\$310,000

Renovations at the Gary Courthouse  
\$215,000

---

# GOVERNMENTAL

---

CSK ARCHITECTS, P.C.

## **Town of Schererville**

### **Addition and Renovations of Fire Station #3**

1949 Springvale Drive  
Schererville, Indiana  
Completed 2022  
\$1,430,000.00

### **New Central Fire Station**

Preliminary Design Started 2022

## **Town of Dyer**

### **New Fire Station**

213th Street Central Park  
Dyer, Indiana  
Completed 2021  
\$2,500,000.00



New Fire Station  
Dyer, Indiana

### **Central Park Concession and Restroom Facility and Sports Lighting**

Completed in 2021  
\$820,000.00

## **Porter County Public Library**

### **Reroof Portage and Valparaiso Branch**

Recently Completed  
\$393,350.00

Flooring Upgrades at all Facilities  
Completed 2020  
\$556,000.00

HVAC Renovations to Portage and Valparaiso  
Currently Under Construction  
\$931,000.00

---

# GOVERNMENTAL

---

CSK ARCHITECTS, P.C.

## **City of Portage**

### **Open Air Pavilion**

6090 US 12  
Portage, Indiana  
15,500 Square Foot Rental Facility  
Completed 2019



Open Air Pavilion  
Portage, Indiana

### **Renovations to Concession Stand at Imagination Glen Park**

2275 McCool Road  
Portage, Indiana  
Completed 2020  
\$270,500.00

### **Portage City Hall Renovation**

6070 Central Avenue  
Portage, Indiana  
Currently Under Construction  
\$1,569,000.00

---

# EDUCATIONAL

---

CSK ARCHITECTS, P.C.

## **Portage Higher Education Facility (Currently Remodeled to Police Station)**

City of Portage, Indiana

32,144 Square Feet

Completed 2012

\$6,200,000



Portage Higher Education Facility  
Portage, Indiana  
Preliminary Rendering  
Rendering by: Short Elliott Hendrickson, Inc.



Portage Higher Education Facility  
Portage, Indiana  
Preliminary Interior Rendering  
Rendering by: Short Elliott Hendrickson, Inc.

---

# **EDUCATIONAL**

---

CSK ARCHITECTS, P.C.

## **Purdue University Calumet**

### **Renovations to Gyte Building Rm. 237**

Completed 2012

\$113,000

### **Renovations to Lawshe Hall**

Chancellor's Office

Completed 2010

\$120,000

### **New Remote Observatory & Support Facility**

Completed 2009

\$80,000

### **Renovations to Fitness & Recreation Center (FRC)**

Women's Locker Room & Concession Stand

Completed 2008

### **Renovations to Lawshe Hall**

3rd Floor Elevator Lobby

Completed 2008

### **Renovations to Student Library**

Office Renovations

Completed 2007

### **Renovations to Fitness & Recreation Center (FRC)**

Men's & Women's Showers

Completed 2007

### **Window and Door Replacement for**

### **GYTE Building and GYTE Tenant**

Completed 1998

\$600,000

---



# EDUCATIONAL

---

CSK ARCHITECTS, P.C.

## **Calumet College of St. Joseph**

### **Addition & Renovations to Calumet College of St Joseph**

Whiting, Indiana

7,300 sq. ft.

New Student Commons, Science Laboratories, Art Rooms, & Bookstore

Renovations to Library & Photography Department

Completed 2012

\$3,000,000

### **New Student/Community Activity Center**

Whiting, Indiana

26,000 sq. ft. Athletic Facility with:

Gymnasium, Classroom, Locker Rooms/Shower Rooms, Athletic Department

Offices, Trainer and Concession Areas

Completed 2009

\$3,500,000



Calumet College of St. Joseph Student/Community Activity Center  
Whiting, Indiana

---

# EDUCATIONAL

CSK ARCHITECTS, P.C.

## **School Town of Munster**

*Munster, Indiana*

### **New Eads Elementary School**

Capacity: 600 Students

72,000 sq. ft.

Completed 2003

\$9,300,000



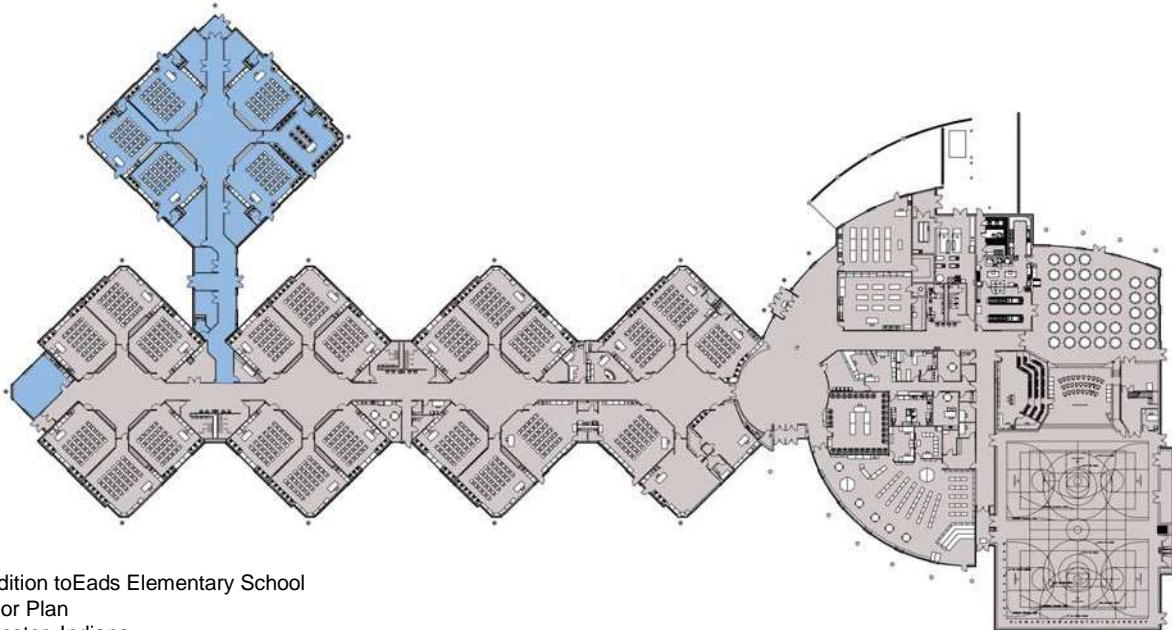
Eads Elementary School  
Munster, Indiana

### **Addition to Eads Elementary School**

11,600 sq. ft.

Completed 2009

\$2,400,000



Addition to Eads Elementary School  
Floor Plan  
Munster, Indiana

# EDUCATIONAL

---

CSK ARCHITECTS, P.C.

## **School Town of Munster**

*Munster, Indiana*

### **New Elliott Elementary School**

72,000 sq. ft.

Completed 2005

\$9,300,00

### **Additions & Renovations to:**

#### **Wilbur Wright Middle School**

13,000 sq. ft.

9 Classroom Addition Completed 2004

Gymnasium Addition Completed 2007

### **New Bus Barn**

49,000 sq. ft.

Completed 2006



Eads Elementary School  
Munster, Indiana  
Interior Lobby Detail



Eads Elementary School  
Munster, Indiana  
Interior Main Lobby

---

# EDUCATIONAL

---

CSK ARCHITECTS, P.C.

## **School Town of Munster**

*Munster, Indiana*

**Various Renovation Projects to:**

**Munster High School**

**Wilbur Wright Junior High School**

**Elliott Elementary School**

**Eads Elementary School**

1983 to Present

\$15,000,000+



Frank Hammond Elementary School

Munster, Indiana

Entry Addition

## **Additions & Renovations to:**

**Frank Hammond Elementary School**

### **Classroom Addition and Renovations**

Completed 2000

\$2,400,000

### **Cafetorium & Entry Addition**

Completed 1997

\$2,000,000

---



# EDUCATIONAL

CSK ARCHITECTS, P.C.

## **School Town of Munster**

*Munster, Indiana*

### **New Tennis Court Facility**

4 New Full Courts

4 New Half Courts

6 Courts Resurfaced

Completed 2000

\$550,000

### **New Munster High School Press Box**

Completed 2000

\$194,000



School Town of Munster  
Tennis Court Facility  
Munster, Indiana



Munster High School Press Box  
Munster, Indiana

# EDUCATIONAL

CSK ARCHITECTS, P.C.

## Lake Central School Corporation

### **New Clark Middle School**

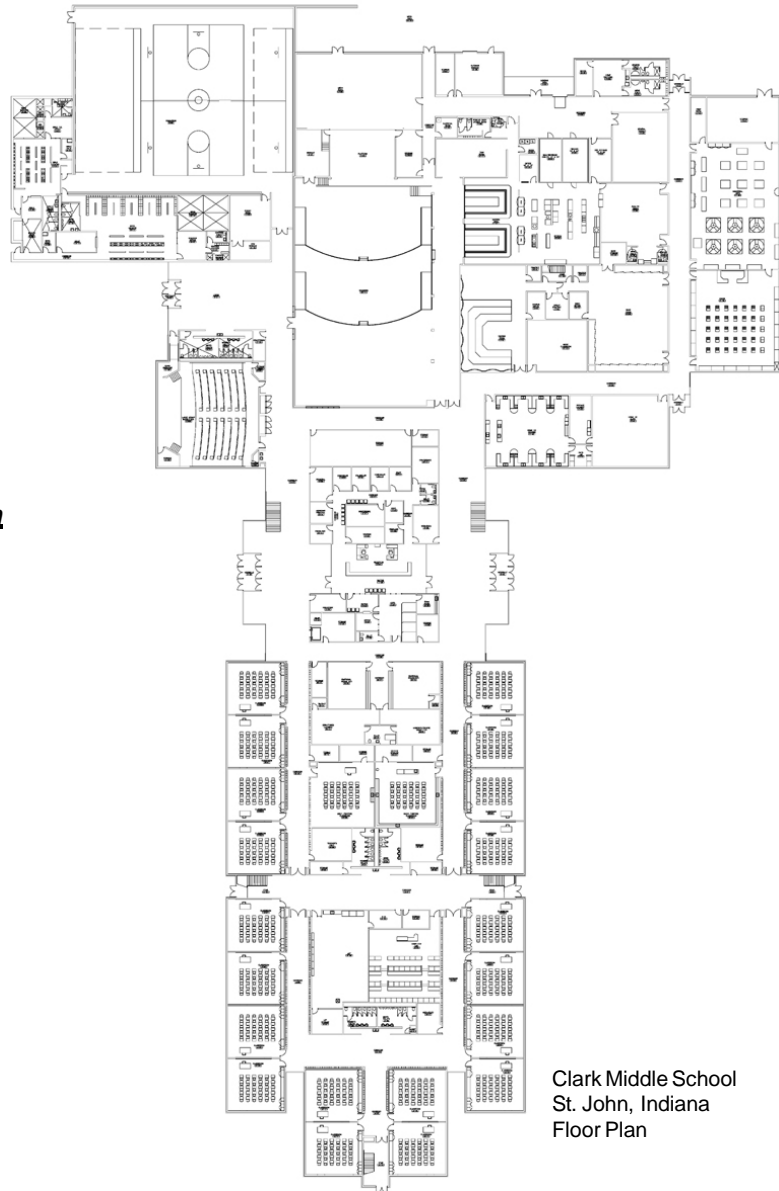
St. John, Indiana

Capacity: 1200+ Students

201,000 sq. ft.

Completed 2008

\$25,000,000



Clark Middle School  
St. John, Indiana  
Floor Plan



Clark Middle School  
St. John, Indiana  
Preliminary Rendering



# EDUCATIONAL

CSK ARCHITECTS, P.C.

## Lake Central School Corporation

### Addition and Renovations to:

### Homan Elementary School

Schererville, Indiana

Completed 1998

\$7,150,000



Homan Elementary School

1988 Addition

Schererville, Indiana



Homan Elementary School

1988 Addition

Schererville, Indiana

# EDUCATIONAL

CSK ARCHITECTS, P.C.

## **Lake Central School Corporation**

### **Additions & Renovations to:**

#### **Peifer Elementary School**

(5 Phases to Date)

Schererville, Indiana

1985 to Present

\$3,500,000

### **HVAC Renovations to:**

#### **Peifer Elementary School**

#### **Protsman Elementary School**

#### **Kolling Elementary School**

\$2,000,000



Peifer Elementary School  
Library Interior  
Schererville, Indiana



Peifer Elementary School  
Courtyard  
Schererville, Indiana

# **EDUCATIONAL**

---

CSK ARCHITECTS, P.C.

## **Lake Central School Corporation**

### **Additions & Renovations to:**

#### **Watson Elementary School**

Schererville, Indiana

1988 to Present

\$3,000,000



Watson Elementary School  
Entry Addition  
Schererville, Indiana

## **Lake Central High School**

Automatic Direct Digital Temperature Control  
and Energy Management System Installation  
\$311,000

## **New Soccer Field**

Completed 2003  
\$330,000

---



# EDUCATIONAL

CSK ARCHITECTS, P.C.

## Lake Central School Corporation

### Additions & Renovations to:

### Protsman Elementary School

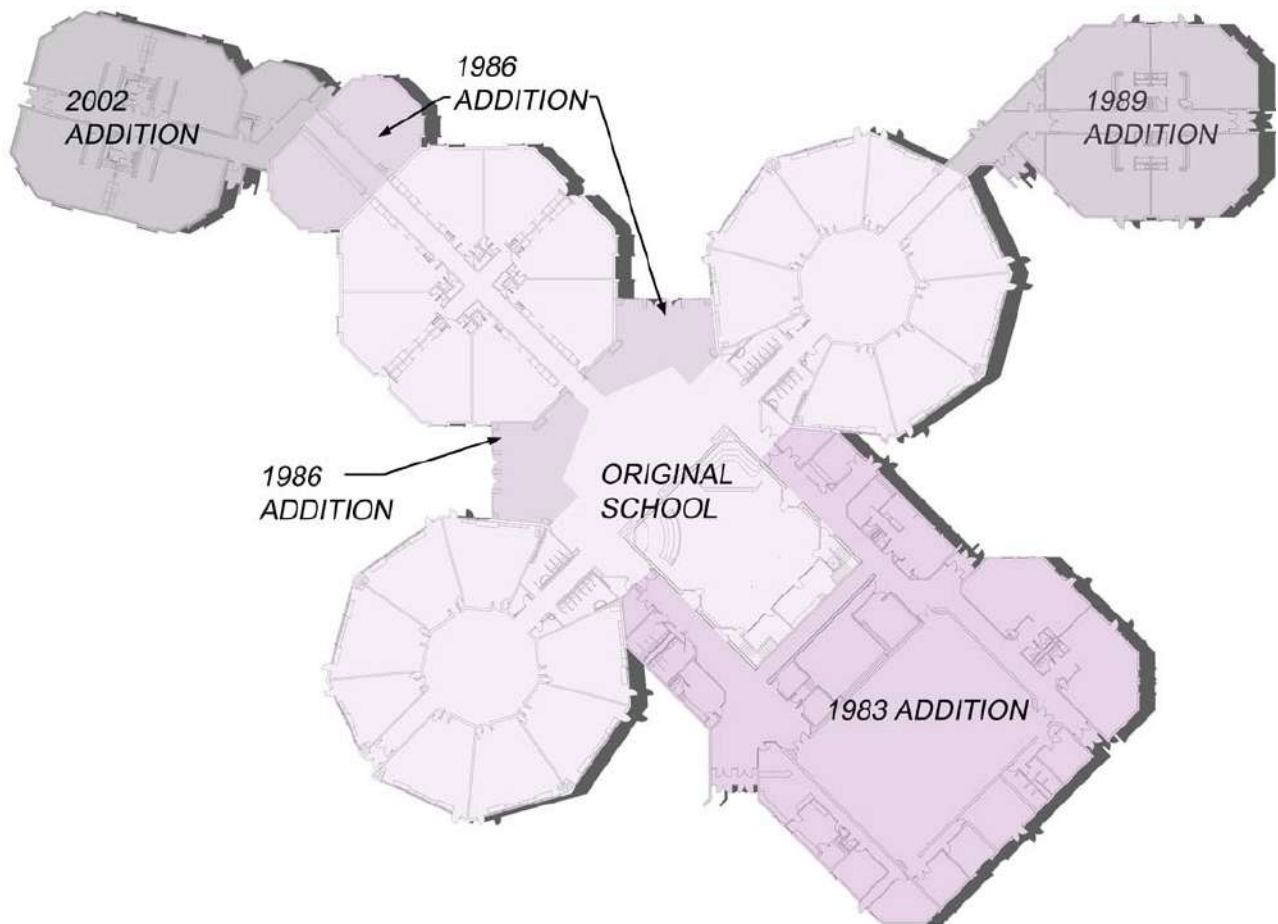
(6 Phases to Date)

1983 to Present

Dyer, Indiana

Completed 2002

\$6,000,000



Protsman Elementary School  
Floor Plan Showing Carras-Szany-Kuhn Additions and Renovations  
Dyer, Indiana

# EDUCATIONAL

CSK ARCHITECTS, P.C.

## **Lake Central School Corporation**

### **Computer Technology and Telephone Systems Upgrades for Six Elementary Schools**

Completed 1998

\$550,000

### **Lake Central High School New Tennis Court Facility**

8 New Courts

Completed 1995

\$160,000

### **Additions & Renovations to: Grimmer Middle School & Watson Elementary School**

Renovations, Upgrades, & 8 Classroom Addition

Schererville, Indiana

1999 to Present

\$2,250,000

### **Addition & Renovations to: Kolling Elementary School**

St. John, Indiana

1993 to Present

\$4,750,000

### **Reroof of Original Building**

Completed 2004

\$300,000



Kolling School  
2000 Addition  
St. John, Indiana

# EDUCATIONAL

---

CSK ARCHITECTS, P.C.

## **South Newton School Corporation**

### **Addition and Renovations to: Middle/High School**

Kentland, Indiana

Middle School Completed 2000

\$1,500,000

High School Completed 2002

\$300,000



South Newton Middle School  
2000 Addition  
Kentland, Indiana

## **LaPorte Community School Corporation**

### **New Tennis Court Facility**

10 New Tennis Courts

Completed 2003

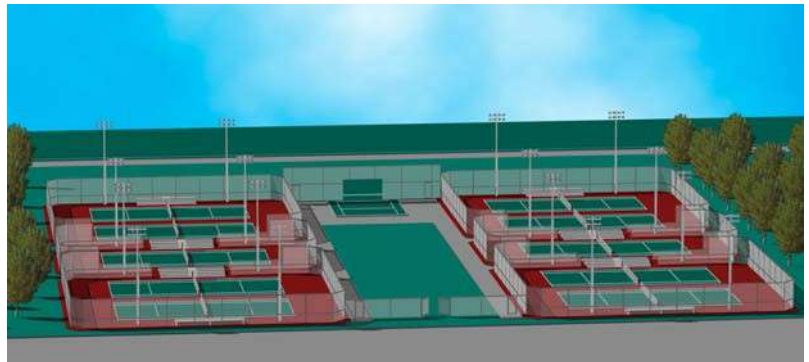
\$750,000

## **Crown Point Schools**

### **Various School Renovations**

Completed 2001- 2002

\$2,100,000



LaPorte Community School Corporation  
Tennis Court Facility  
LaPorte, Indiana  
Preliminary Rendering

---



# EDUCATIONAL

CSK ARCHITECTS, P.C.

## School City of Hammond

### **New Franklin Elementary School**

Hammond, Indiana

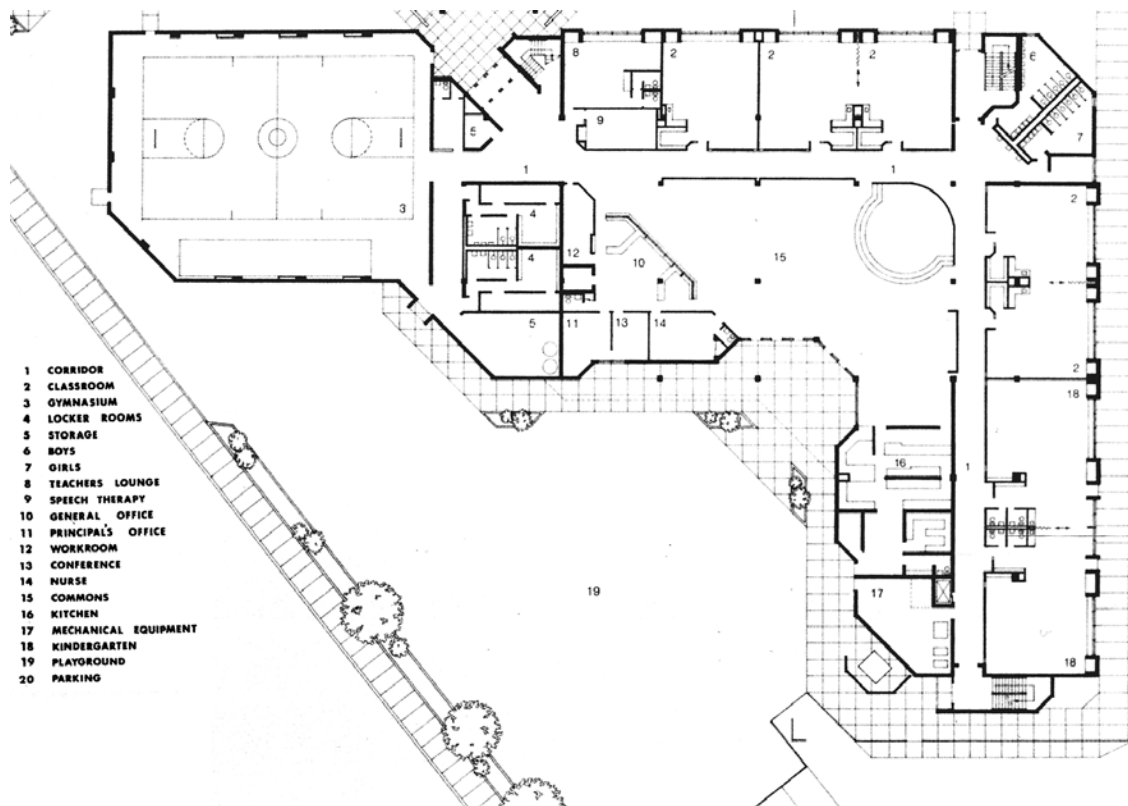
81,000 sq. ft.

Completed 1974

\$2,400,000



Franklin Elementary School  
Hammond, Indiana



Franklin Elementary School  
Hammond, Indiana  
Floor Plan

# **EDUCATIONAL**

---

CSK ARCHITECTS, P.C.

## **School Town of Highland**

### **Renovations to Existing Football Field**

New sub-grade drainage & irrigation system; regrading & new sod  
Completed 2008  
\$323,000

### **Renovations to Existing Tennis Courts (10 total)**

New asphalt resurfacing & repair of existing fence.  
Completed 2008  
\$222,000

### **Renovations to Existing Track (8 Lane)**

New asphalt resurfacing & Polyurethane Track Surface  
Completed 2008

## **Catholic Diocese of Gary**

### **Gymnasium Addition to St. Bridget Catholic Elementary School**

Hobart, Indiana  
Completed 1986

### **Additions to St. Michael Catholic Elementary School**

Addition to Second Floor Classrooms and  
Gymnasium Social Center  
Schererville, Indiana  
Completed 1981 & 1983  
\$1,000,000

### **Gymnasium Addition to St. Joseph Catholic Elementary School**

Dyer, Indiana  
Completed 1984  
\$450,000

## **Consolidated School District 168**

### **Admiral Hyman Rickover Junior High School**

Sauk Village, Illinois  
75,000 sq. ft.  
Completed 1968

## **Suncrest Christian Church**

### **Educational Addition**

St. John Indiana  
8,000 sq. ft.  
Completed 2005

---

# EDUCATIONAL

CSK ARCHITECTS, P.C.

## Noonan Academy

### New Parochial Elementary School

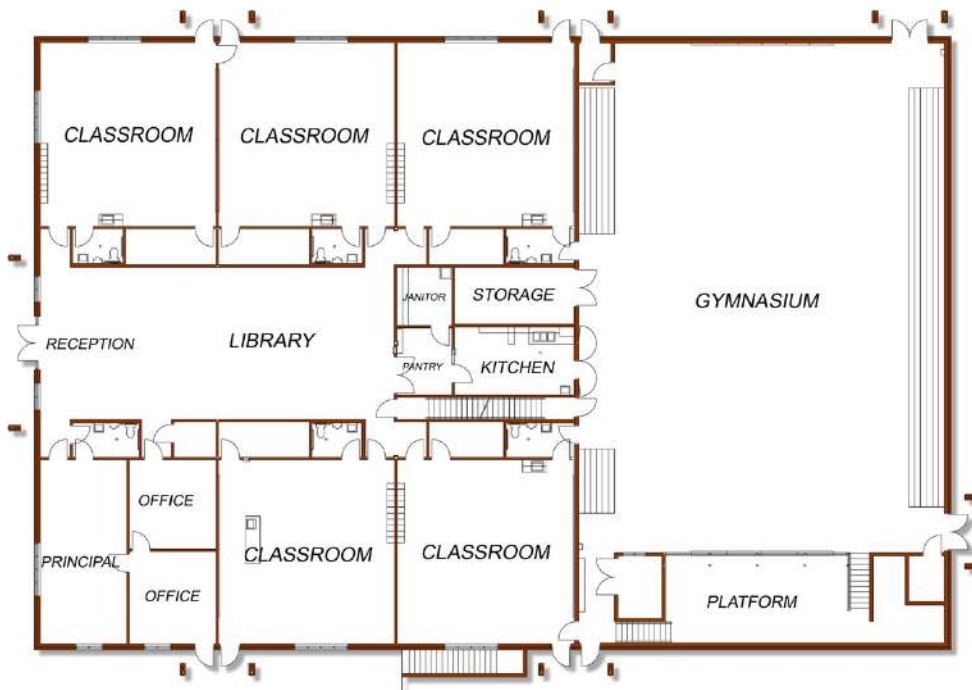
Mokena, Illinois

Completed 2003

\$2,600,000



Noonan Academy  
Mokena, Illinois  
Preliminary Rendering



Noonan Academy  
Mokena, Illinois  
Floor Plan

# EDUCATIONAL

CSK ARCHITECTS, P.C.

---

## **Griffith Public Schools**

### **Baseball Field Concession Stand and Press Box**

**Griffith High School**

Completed 2006

\$88,000

### **Flooring Updates**

**Griffith High School**

Completed 2012

\$1,000,000

### **Griffith High School Outdoor Track**

**Griffith High School**

Completed 2013

### **New Griffith High School Lighted Softball Field and New Lighting for the Existing Baseball Field**

Completed 2013

\$725,000

### **Football Field and Tennis Courts Lighting Projects**

**Griffith High School**

Completed 2014

\$365,000



### **New Varsity Synthetic Football Field and Football Practice Field Upgrades**

**Griffith High School**

Completed 2015

\$1,047,250

---

## **Merrillville Community School Corporation**

### **New Bus Barn Facility, Fuel Tanks and Canopy**

Completed 2016

\$2,300,000

### **Reroofing of Five Schools**

Bid in 2021

Currently Under Construction

\$3,578,000.00

### **Football Stadium Rehabilitation**

Bid 2021

Currently Under Construction

\$665,000.00

### **Multiple Other Renovation Projects**

Bid in 2021

Recently Completed

\$292,000.00

---



# EDUCATIONAL

CSK ARCHITECTS, P.C.

---

## Tri-Creek School Corporation

### **Facilities Master Plan**

Currently in process of completing a comprehensive format for the entire school system to be completed in April 2022

### **Administration Office**

2018 Renovations  
Solar Panels  
Security System Upgrades

## Oak Hill Elementary School

### **Summer 2015 Construction / Renovations**

Completed 2015  
\$1,440,000

### **2016 Renovations**

Completed 2016  
\$1,600,000

### **Classroom Additions and Renovation**

Completed 2020  
\$4,000,000

## Lake Prairie Elementary School

### **Late Summer 2015 Renovations**

Completed 2015  
\$1,250,000

### **2016 Renovations**

Completed 2016  
\$1,400,000

## Three Creeks Elementary School

### **Late Summer 2015 Renovations**

Completed 2015  
\$950,000

### **2016 Renovations**

Completed 2016  
\$1,522,000

### **Classrooms Addition / Renovations**

Completed 2020  
\$4,300,000

---

# **EDUCATIONAL**

CSK ARCHITECTS, P.C.

---

## **Lowell High School**

### **Addition and Renovations to Red Devil Trades Building**

Currently Under Construction

\$3,555,000.00



Red Devil Trades  
Lowell, Indiana

### **2017 New Advanced Manufacturing Trades Building at Lowell High School**

Completed 2018

\$4,250,000

### **2016 Renovations**

Completed 2016

\$5,830,000

### **Security Upgrade at Main Entrance of Lowell High School**

\$140,000

### **Relocation of Chillers**

Lowell High School

\$500,000

### **Renovations in Pool**

\$200,000

## **Lowell Middle School**

### **Parking Lot Improvements**

\$440,000

### **Chiller Replacement**

\$75,000

## **Lake Station Schools**

### **Reroofing Project for Schools**

Currently Under Construction

\$1,168,000

---

# MEDICAL

CSK ARCHITECTS, P.C.

## **Northshore Health Center**

6050 Sterling Creek  
Portage, Indiana 46368  
50,000 sq. ft. Community Health Center  
Completed in 2021  
\$10,000,000.00



Northshore Health Center

## **Dental Office for Dr. Yekel**

1555 Cline Avenue  
Griffith, Indiana  
New Facility  
3,600 ft<sup>2</sup> - \$400,000.00  
Completed in 2004



Dental Office for Dr. Yekel

## **Twin Creek Plaza**

1630 - 45th Street  
Munster, Indiana

Orthodontics Inc.  
Drs. Koufos / Rooksberry Suite  
Completed in 1998

Dr. Meister's Suite  
Various Renovations 2007-2017

## **Dr. Wadas Dental Office**

Merrillville, Indiana

## **Environ Medical-Professional Center**

5 Building Medical Office Complex  
Oral Surgery Suite, Cardiac Rehab Suite  
for Broadway Methodist Hospital  
Dental and Orthodontic Suites and  
25 Doctor Office Spaces  
Merrillville, Indiana - 40,000 ft<sup>2</sup>  
1976 through 1985



Twin Creek Plaza  
Exterior Renovation

# MEDICAL

CSK ARCHITECTS, P.C.

## **St. Catherine Hospital**

*East Chicago, Indiana*

### **Acute Rehabilitation Unit**

Various Expansions and Remodeling  
2004 - Present

### **Renovations to 3rd Floor Neurology**

Completed 2010  
\$930,000

### **Renovations for New Cyberknife Cancer Treatment Center**

Completed 2006

### **Renovations to Emergency Area**

15,000 sq. ft.  
Completed 2000

### **New Gift Shop Facility**

2,000 sq. ft.  
Completed 2000

### **Renovations to Outpatient Registration & Phlebotomy Area**

10,000 sq. ft.  
Completed 1999

### **Renovations to Physical Therapy/ Occupational Therapy**

10,000 sq. ft.  
Completed 1999

### **Renovations to Cardiac Rehabilitation Area**

4,000 sq. ft.  
Completed 1997

### **Addition Family Health Center New Labor & Delivery Facility**

9,000 sq. ft.  
Completed 1997

### **Renovations to Skilled Nursing Facility**

13,200 sq. ft.

### **Addition to Linear Accelerator Facility**

6,000 sq. ft.



St. Catherine Hospital  
East Chicago, Indiana  
Family Health Center

# **MEDICAL**

CSK ARCHITECTS, P.C.

---

## **Community Foundation of Northwest Indiana**

Administration Building  
9201 Calumet Avenue  
Munster, Indiana  
12,800 SF Complete Interior and Exterior Remodel  
Completed 2020  
\$2,500,000.00

### Various Build Outs for Doctor Offices

9050 Columbia Avenue	9120 Columbia Avenue
9112 Columbia Avenue	9126 Columbia Avenue
Munster, Indiana	

Medical Office Remodel  
9104 Columbia Avenue  
Munster, Indiana  
10,000 sq. ft.  
Completed 2018

Medical Office Build-Out  
Harvest Drive and US 30  
Schererville, Indiana

## **St. Mary Medical Center**

Valparaiso Health Center  
Nuclear Medical Facility Remodel  
Completed 2018

Portage Health Center  
Nuclear Medical Facility Remodel  
Completed 2017

Portage Health Center  
CT / MRI / Xray and Medical Office Build-Out  
Completed 2016

Connector PHC I to PHC 2  
Completed 2016

Dr. Ziegler Medical Office & Dr. Zach Medical Office  
Hobart, Indiana

Home Health Expansion

---



# **MEDICAL** ST. ANTHONY MEDICAL CENTER

---

C. K ARCHITECTS, P.C.

## **St. Anthony Medical Center**

### **New Outpatient Surgery Facility**

4 Operating Room Facility including  
Doctors Offices and Diagnostics Center  
Chandana Pointe  
Valparaiso, Indiana  
30,000 sq. ft.

### **North Pointe Medical Center**

Medical Office Facility  
Crown Point, Indiana  
12,000sq. ft.  
Completed 1993



St. Anthony Medical Center  
North Pointe Medical Center  
Crown Point, Indiana

### **New Satellite Diagnostics Facility**

Diagnostics Facility Including X-ray  
Treatment & Mammography  
Schererville, Indiana  
5,000 sq. ft.  
Completed 1990

---

# MEDICAL

CSK ARCHITECTS, P.C.



Healthy East Chicago  
East Chicago, Indiana

## **Healthy East Chicago Center**

### **New Public Health Facility**

East Chicago, Indiana

30,000sq. ft.

Completed 1998

\$3,400,000.00



Healthy East Chicago  
East Chicago, Indiana  
Reception Area



Healthy East Chicago  
East Chicago, Indiana  
Interior Court

# MEDICAL

CSK ARCHITECTS, P.C.

## **Munster Med-Inn**

### **New Drop-Off Canopy & Renovations to Atrium Vestibule**

Completed 2010

\$130,000.00

## **Interior Renovations**

Munster, Indiana

43,200 sq. ft.

## **St. Mary's Medical Center**

### **Addition to Sub-Acute Care & Medical Offices**

Hobart, Indiana

Completed 1998

\$3,400,000.00

## **Moses EyeCare Center**

### **Interior Renovations**

701 W 5th Avenue

Gary, Indiana

6,250 sq. ft.

Completed 1997

## **Dr. Zonakis Ear, Nose and Throat Specialists**

### **New Medical Facility**

Valparaiso, Indiana

5,400 sq. ft.

## **Hospice of the Calumet Area**

### **New William J. Riley Memorial Residence**

Hospice Residence for the Terminal III

Munster, Indiana

Completed 1997



St. Mary Medical Center  
Hobart, Indiana



William J. Riley Memorial Residence  
Munster, Indiana

# MEDICAL

---

CSK ARCHITECTS, P.C.

**Dr. Block and Dr. Stevenson**

**New Medical Office Space**

The Williamsburg  
Merrillville, Indiana  
Completed 1994

**New Medical Clinic**

USX at Park 84  
Merrillville, Indiana  
12,000 sq. ft.  
Completed 1993

**Dr. Khaia and Dr. Yessenow**

**New Medical Office Space**

Munster, Indiana  
7,500 sq. ft.  
Completed 1988

**St. Margaret Hospital**

**Renovations to:**

Medical Library; Medical Records; Pre-Admittance; Physical Therapy;  
Occupational Therapy; Doctor's Lounge; Dining & Social Services  
in the Main Building  
Hammond, Indiana  
20,000 sq. ft.  
Completed 1986

**Broadway Medical Center**

**New Medical Office Facility**

Seven Medical Suites  
Merrillville, Indiana  
15,000 sq. ft.  
Completed 1985

**Ross Clinic**

**New Outpatient Surgery Center**

Merrillville, Indiana  
5,000 sq. ft.  
Completed 1980

---

# MEDICAL

---

CSK ARCHITECTS, P.C.

## **Methodist Hospital**

### **Crown Point Sportsplex**

6,800 SF 2nd Floor Medical Office Build-Out  
1275 E. North Street  
Crown Point, Indiana  
Completed 2021  
\$680,000.00

### **4th Floor Pavilion 'A'**

5,800 SF Medical Office Build-Out  
101 E. 87th Avenue  
Merrillville, Indiana  
Completed 2021  
\$910,000.00

## **Crown Point Christian Village**

1,800 SF Day Room Addition  
1,600 SF Remodel  
Dementia Unit Relocation and Expansion  
11817 Knox Street  
Winfield, Indiana  
Completed 2017

---



# **RELIGIOUS**

---

CSK ARCHITECTS, P.C.

## **Plum Creek Christian Academy**

735 213th Street  
Dyer, Indiana 46311  
12,000 sq. ft.  
Completed in 2016  
\$1,700,000

## **Addition and Renovations**

### **Dyer Baptist Church**

735 - 213th Street  
Dyer, Indiana  
Complete

---

# RELIGIOUS

CSK ARCHITECTS, P.C.

## **Village Evangelical Free Church**

### **New Religious Worship Facility**

Dyer, Indiana

18,000 sq. ft.

Completed 2007

## **St. James Catholic Church**

### **New Religious Worship Facility**

Catholic Diocese of Gary

Church and Offices - 1987

New Educational Center - 1999

Highland, Indiana

## **Zion Lutheran Church**

### **Classroom Addition**

Beecher, Illinois

Completed 1999

## **St. Margaret Mercy South**

### **Renovations to Chapel**

100 seat capacity

Dyer, Indiana

Completed 1996



St. James Catholic Church  
Highland, Indiana



St. James Catholic Church  
Highland, Indiana

# RELIGIOUS

---

CSK ARCHITECTS, P.C.

## **Protection of the Virgin Mary Orthodox Church**

### **New Religious Worship Facility & Social Hall**

Merrillville, Indiana

Completed 1999

\$1,300,000



Protection of the Virgin Mary Orthodox Church  
Merrillville, Indiana

## **Holy Trinity Greek Orthodox Church**

### **Addition to Religious Worship Facility**

250 seats Administration Offices & Multi-Purpose Area

Fort Wayne, Indiana

15,000 sq. ft.

Completed 1994

## **First Assembly of God**

### **Addition to Multi-Purpose Area & Religious Education**

Merrillville, Indiana

\$600,000

## **St. Joan of Arc**

### **Addition to Christian Education Facility**

Merrillville, Indiana

---

# RELIGIOUS

---

CSK ARCHITECTS, P.C.

**Peace United Church of Christ**

**New Worship Space and Christian Educational Facility**  
Merrillville, Indiana

**St. Joseph Catholic Church**

**Renovations to Handicapped Ramps & New Entries**  
Dyer, Indiana

**Grace United Methodist Church**

**Addition & Renovations Religious Education Facility**  
Gary, Indiana

**Orchard Drive Baptist Church**

**Addition to Christian Education Facility**  
Hammond, Indiana

**St. Joseph Catholic Church**

**Renovations to Church Hall and Conversion  
of Abandoned Convent Building to Christian  
Education Center**  
Hammond, Indiana

**Saint Mathias Catholic Church**

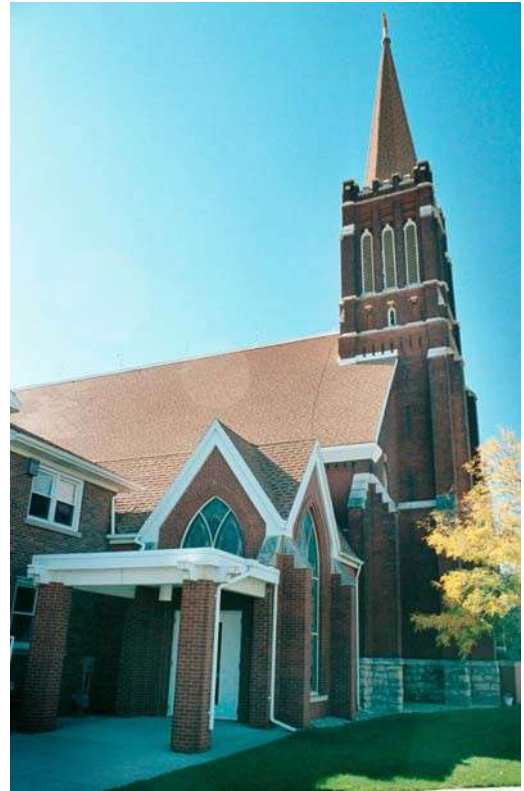
**New Religious Worship Facility**

Capacity: 750

Catholic Diocese of Gary

Crown Point, Indiana

Completed 1981



St. Joseph Catholic Church  
Schererville, Indiana



St. Mathias Catholic Church  
Crown Point, Indiana

---



# RELIGIOUS

---

CSK ARCHITECTS, P.C.

## **St. Paul's Episcopal Church**

Munster, Indiana

### **New Cloister in the Woods Mulyi-Purpose Facility**

Completed 1996

### **New Religious Worship Facility**

Capacity: 200

Completed 1988

### **New Christian Education Center & Multi-Purpose Areas**

Completed 1988



St. Paul's Episcopal Church  
Munster, Indiana

## **Saint Nicholas Greek Orthodox Church**

### **New Religious Worship Facility**

Capacity: 285

Fort Pierce, Florida

Completed 1987

## **Saint Demetrios Greek Orthodox Church**

### **New Worship Facility &**

### **Renovations to Christian Education & Social Center**

Hammond, Indiana

Completed 1968 and 1980

## **Olympia Fields Baptist Church**

### **Religious Worship Facility and**

### **Christian Education Facility**

Olympia Fields, Illinois

## **Immanuel United Church of Christ**

### **New Religious Worship Facility and Christian Education Facility**

Capacity: 300

Highland, Indiana

---



# INDUSTRIAL

---

CSK ARCHITECTS, P.C.

## **Amoco Oil Company**

*Whiting, Indiana*

### **Whiting Refinery**

Thirty-Five Projects including:

7 Computer Control Buildings  
Training Center Building  
Chemical Plant  
Propylene Building  
Wax Plant  
3 Electrical Equipment Building  
9 Storage Buildings  
Flyash Building  
Gate House

## **Globe Industries**

### **New Industrial Manufacturing & Warehouse Building & Acoustical Testing Lab Building**

*Lowell, Indiana*

100,000 sq. ft.

Completed 1990

## **Avery International Thermark Division**

*Schererville, Indiana*

We have done a number of manufacturing and office related projects for their facility including:

### **New Lacquer Plant and Wash Building**

20,000 sq. ft.

### **Complete Office Reorganizations for 2 Divisions**

### **Traffic Enclosure for Supply to Coating Lines**

10,000 ft<sup>2</sup>

## **Lowell Concrete Products**

### **New Concrete Products Manufacturing & Curing Plant**

*Lowell, Indiana*

82,000 sq. ft.

Completed 2004

---

# INDUSTRIAL

---

CSK ARCHITECTS, P.C.

## **Continental Machine**

*(Currently Railroad Services)*

Designed most of plant and all office spaces,  
over a 13 year period from 1977 to 1991 including:

Fab Shop and Office Additions  
in 1981, 1985, 199  
East Chicago, Indiana  
100,000 sq. ft.

## **Hadady Company**

### **Renovations to Existing Building**

Lansing, Illinois  
Completed 1991

## **Custom Steel Buildings**

### **ABF Freight Systems, Inc.**

Sauk Village, Illinois  
Freight Docks - 23,000sq. ft.  
Break Room - 2,000 sq. ft.  
Completed 1998

### **Zinc Recovery Industries**

East Chicago, Indiana  
7,000 sq. ft  
Completed 1999

### **Universal Metal Services Corporation**

South Holland, Illinois

**Fabrication Support** - 2,600 sq. ft.

Addition & Renovations to Locker Room - 4,200 sq. ft.  
Completed 1999

### **Building Addition for Waxstar Corporation**

Completed 1999

## **City of Hammond**

### **New Truck Wash & Salt Storage Buildings**

City Garage Area  
Completed 1983

---

## **Becknell Industrial**

Tenant Improvement for Foremost  
6451 Northwind Parkway  
Hobart, Indiana  
1,4000 SF Office Build-Out  
Completed 2017

Tenant Improvement for Cal Pipe  
6451 Northwind Parkway  
Hobart, Indiana  
Breakroom and Warehouse Toilet Addition  
Completed 2017

MRC Global Office Expansion  
101 45th Street  
Munster, Indiana  
2,000 SF Office Expansion  
Completed 2019

FedEx Expansion  
101 45th Street  
Munster, Indiana  
Warehouse Toilet Rooms and Dock access  
December 2020

Orean Cosmetics  
1901 Northwind Parkway  
Hobart, Indiana  
Office and Warehouse Renovations  
Completed 2022

---

# MULTI-FAMILY HOUSING

---

CSK ARCHITECTS, P.C.

## **Masterson's Station**

**2 Buildings Total - 228 Units With 500 Bedrooms**

3rd Street & Cardinal Boulevard

Louisville, Kentucky

Completed 2012



Masterson's Station Building #1

Louisville, Kentucky

Preliminary Rendering

Rendering by: 72architects, LLC

## **The UptownEast**

**Buildings #3 & #4**

**2 Buildings - 96 Units**

LaPorte Avenue

Valparaiso, Indiana

Completed 2011



The Uptown East Building #4

Valparaiso, Indiana

South Elevation

# **MULTI-FAMILY HOUSING**

---

CSK ARCHITECTS, P.C.

## **University of Illinois**

Latitude Student Housing Complex  
508/608 E. University Avenue  
Champaign, Illinois  
Completed 2016  
\$51,000,000

Pool House  
108 N. Sixth Street  
Champaign, Illinois  
Completed 2016

Pool Tree House Arbor  
Drawings and Report  
108 N. Sixth Street  
Champaign, Illinois  
Completed 2016

Hammerhead Coffee Shop  
608 E. University Drive  
Champaign, Illinois  
Completed 2016

Building "A" - Dog Run  
608 E. University Drive  
Champaign, Illinois  
Completed 2016

---



# **MULTI-FAMILY HOUSING**

---

CSK ARCHITECTS, P.C.

## **Ball State University**

Village Promenade  
Ball State Student Housing  
324 N. Martin Street  
Muncie, Indiana  
Completed 2014  
\$35,000,000

Promenade Coffee Shop  
Ball State Student Housing  
324 N. Martin Street  
Muncie, Indiana  
Completed 2014

---

# **MULTI-FAMILY HOUSING**

---

CSK ARCHITECTS, P.C.

## **Indianapolis, Indiana**

Housing Development Project  
350 W. St. Clair Street  
Indianapolis, Indiana

## **Valparaiso, Indiana**

Uptown East

---

# ***MULTI-FAMILY HOUSING***

---

CSK ARCHITECTS, P.C.

## **University of Louisville**

Denny Crum Hall  
2403 Floyd Street  
Louisville, Kentucky  
Under Construction

---

# ***MULTI-FAMILY HOUSING***

---

CSK ARCHITECTS, P.C.

## **Carriage Green Apartments**

### **4 Buildings - 80 Units**

Dora Lane & Ed Cooke Boulevard  
Plymouth, Indiana  
Completed 1997

## **Douglas Pointe Villas**

Douglas Street  
Hammond, Indiana  
Completed 1996 & 1997

## **Riverview Pointe Apartments**

*HUD Financed Project*

### **7 Buildings - 100 Units**

Riverview Drive  
Battle Creek, Michigan  
Completed 1996

## **Sundance Apartments**

### **3 Buildings - 72 Units**

Willow Creek Road  
Portage, Indiana  
Completed 1995

## **Deerpath Estates Condominiums**

### **72 Units - 3 Story with Parking Garage**

Watson-Koufos Developers  
Schererville, Indiana  
Completed 1979 - 1982



Douglas Pointe Villas  
Hammond, Indiana

---

# ***MULTI-FAMILY HOUSING***

---

CSK ARCHITECTS, P.C.

## **Park Place Apartments**

**8 Buildings - 192 Units**

Willow Creek Road

Portage, Indiana

Completed 1975 - 1980

## **Parkview Apartments**

**7 Buildings - 80 Units**

Front Street

Niles, Michigan

## **Hammond Housing Authority**

**2001 Renovations - Model Complex**

4 Buildings

Columbia Center

Hammond, Indiana

## **Sherwood Lake Apartments**

**24 Buildings - 576 Units**

Watson-Koufos Developers

Schererville, Indiana

Completed 1968 - 1980

## **McLaughlin Apartments**

**8 Buildings - 216 Units**

Hammond, Indiana

Completed 1966 - 1975



Parkview Apartments  
Niles, Michigan  
Elevation

---



# CONSULTANTS

CSK ARCHITECTS, P.C.

---

## Geotechnical Engineering:

### **K & S Testing & Engineering, Inc.**

9715 Kennedy Avenue  
Highland, Indiana 46322

### **ATC Engineering Services, Inc.**

2224 Industrial Drive, Suite A  
Highland, Indiana 46322

### **AES**

7439 Calumet Avenue  
Hammond, Indiana 46324

## Civil Engineering

### **Torrena Engineering & Surveying**

907 Ridge Road  
Munster, Indiana 46321

### **DVG, Inc.**

11065 Broadway, Suite D  
Crown Point, Indiana 47307

### **James F. Giannini & Associates.**

105 South 2nd Street  
Chesterton, Indiana 46304

## Structural Engineering:

### **James F. Giannini & Associates.**

105 South 2nd Street  
Chesterton, Indiana 46304

## Mechanical Engineering:

### **Crowley Engineering, LLC**

2224 U.S. Highway 41  
Schererville, Indiana 46375

### **R.L. Millies & Associates, Inc.**

9711 Valparaiso Drive  
Munster, Indiana 46321

### **Nova Engineering**

2338 Cline Avenue  
Schererville, Indiana 46375

### **James F. Giannini & Associates.**

105 South 2nd Street  
Chesterton, Indiana 46304

---

**Electrical Engineering:**

**Crowley Engineering, LLC**

2224 U.S. Highway 41  
Schererville, Indiana 46375

**R.L. Millies & Associates, Inc.**

9711 Valparaiso Drive  
Munster, Indiana 46321

**James F. Giannini & Associates.**

105 South 2nd Street  
Chesterton, Indiana 46304

---

# **REFERENCES**

---

CSK ARCHITECTS, P.C.

## **City of Hammond**

Mayor Thomas M. McDermott, Jr.  
5925 Calumet Avenue  
Hammond, Indiana 46320  
(219) 853-6301

## **City of Portage**

Sue Lynch, Mayor  
6070 Calumet Avenue  
Portage, Indiana 46368  
(219) 762-5425

## **Hammond Port Authority**

Mr. Milan A. Kruszynski, Director  
701 Casino Center Drive  
Hammond, Indiana 46320  
(219) 659-7678

## **Lake County Public Library**

Ingrid Norris, Director  
1919 West 81st Avenue  
Merrillville, Indiana 46410  
(219) 796-3541

## **Lake Station Community School**

Dr. Tom Crippliver  
2500 Pike Street  
Lake Station, IN 46405-2258  
(219) 962-1159

## **Merrillville Community School Corporation**

Greg Griffith, Grounds and Maintenance Director  
6701 Delaware Street  
Merrillville, Indiana  
(219) 650-5300

## **Tri Creek School Corporation**

Dana Bogathy  
19290 Cline Avenue  
Lowell, Indiana 46356  
(219) 696-6661

---



X:\Munster - Town of22001 Centennial Park Golf Pro Shop\Drawings\c100 site.dwg



SITE PLAN  
OPTION 1

SCALE: 1" = 30'-0"



PRELIMINARY - NOT FOR CONSTRUCTION

 **CSK ARCHITECTS, P.C.**  
THOMAS E. KUHN, AIA, CSI, AIA, LEED AP - JEREMY S. GILBERT, CSI  
6919 W. LINCOLN HIGHWAY  
CROWN POINT, IN 46307  
219-322-5950  
www.cskarchitects.com

PRO SHOP & CART STORAGE AT  
CENTENNIAL PARK FOR THE  
TOWN OF MUNSTER  
1005 S. CENTENNIAL DRIVE  
MUNSTER, INDIANA 46321

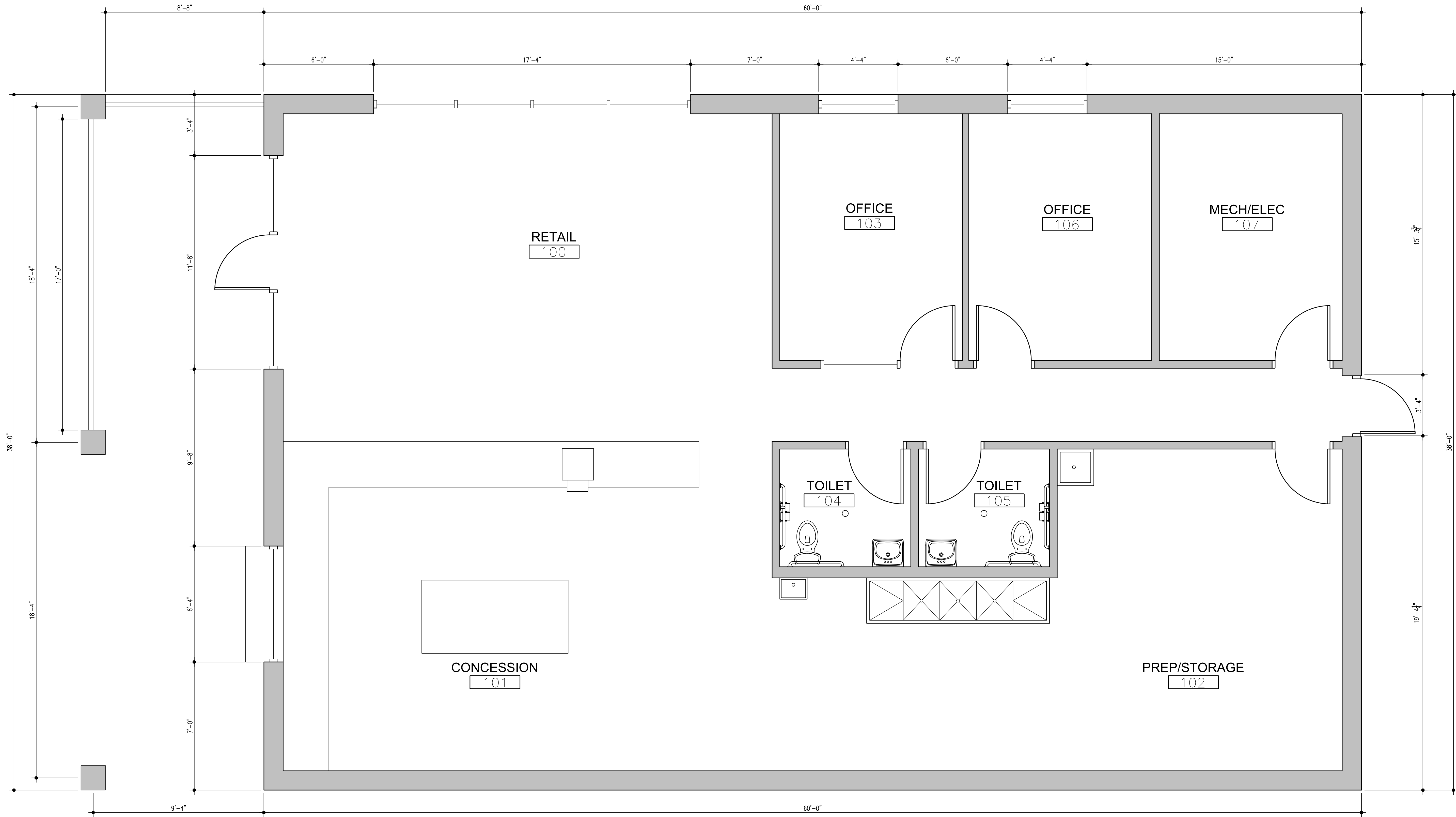
DATE  
03-03-22

22001

SHEET  
**C**  
1.1.0



X:\Munster - Town of22001 Centennial Park Golf Pro Shop\Drawings\100 floorplan.dwg



FLOOR PLAN - PRO-SHOP  
OPTION 1  
SCALE: 3/8" = 1'-0"  
PLAN NORTH

DATE  
03-03-22

PRO SHOP & CART STORAGE AT  
CENTENNIAL PARK FOR THE  
TOWN OF MUNSTER  
1005 S. CENTENNIAL DRIVE  
MUNSTER, INDIANA 46321

**CSK ARCHITECTS, P.C.**  
THOMAS E. KUHN AIA, CSI, ALA - SCOTT GOODWIN AIA, ALA, LEED AP - JEREMY S. GILBERT CSI  
6919 W. LINCOLN HIGHWAY  
219-322-5950  
www.cskarchitects.com

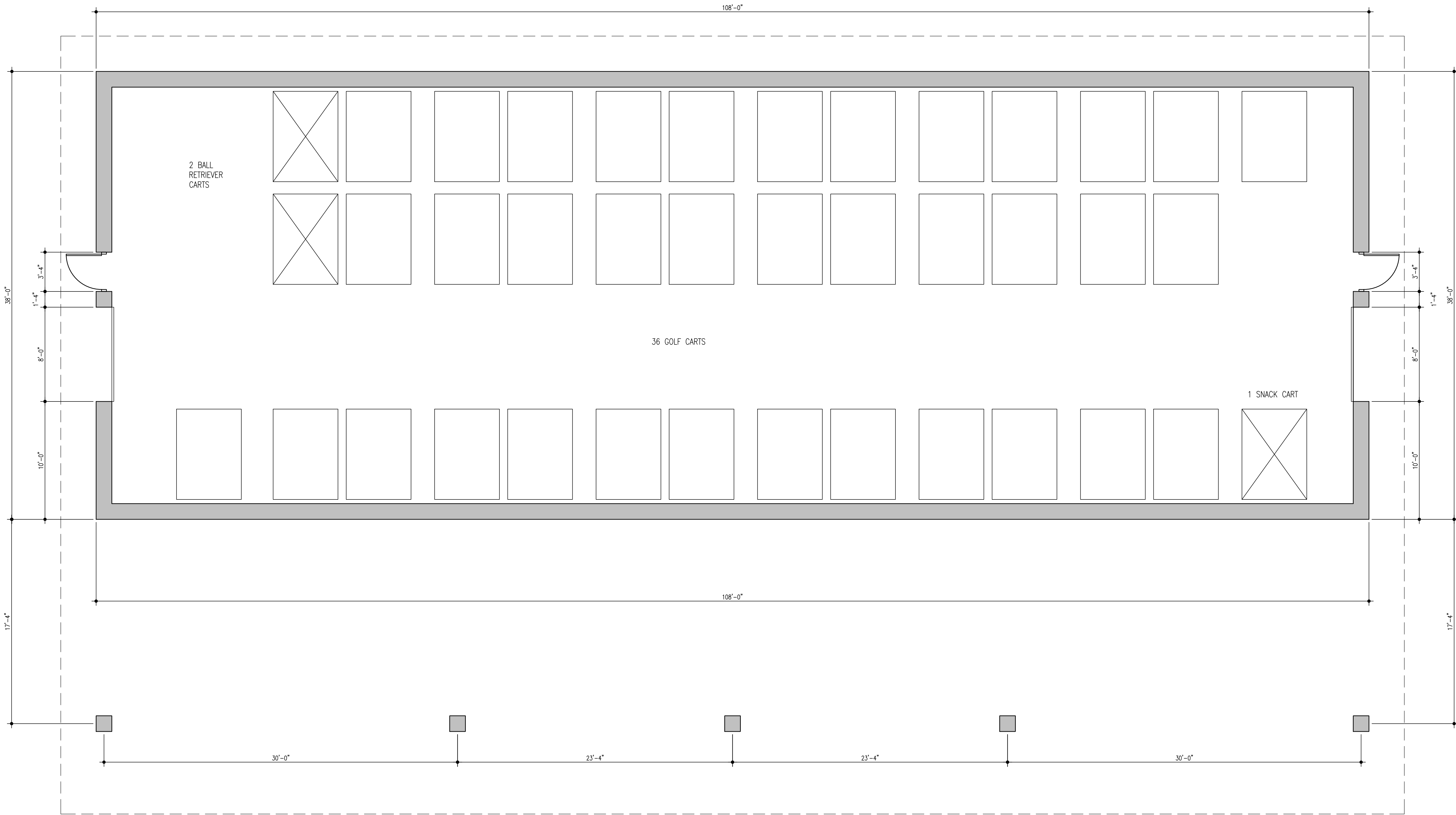
22001

SHEET  
A  
1.1.0

PRELIMINARY - NOT FOR CONSTRUCTION



X:\Munster - Town of22001 Centennial Park Golf Pro Shop\Drawings\la100 floorplan.dwg



FLOOR PLAN - CART STORAGE  
OPTION 1

SCALE: 1/4" = 1'-0"



PRELIMINARY - NOT FOR CONSTRUCTION

**CSK ARCHITECTS, P.C.**  
THOMAS E. KUHN AIA, CSI, ALA - SCOTT GOODWIN AIA, ALA, LEED AP - JEREMY S. GILBERT CSI  
6919 W. LINCOLN HIGHWAY  
CROWN POINT, IN 46307  
219-322-5950  
www.cskarchitects.com

PRO SHOP & CART STORAGE AT  
CENTENNIAL PARK FOR THE  
TOWN OF MUNSTER  
1005 S. CENTENNIAL DRIVE  
MUNSTER, INDIANA 46321

DATE  
03-03-22

22001

SHEET  
A  
1.2.0



X:\Munster - Town of22001 Centennial Park Golf Pro Shop\Drawings\c100 site.dwg



SITE PLAN  
OPTION 2

SCALE: 1" = 30'-0"



PRELIMINARY - NOT FOR CONSTRUCTION

**CSK ARCHITECTS, P.C.**  
THOMAS E. KUHN AIA, CSI, ALA - SCOTT GOODWIN AIA, ALA, LEED AP - JEREMY S. GILBERT CSI  
6919 W. LINCOLN HIGHWAY CROWN POINT, IN 46307  
219-322-5950 www.cskarchitects.com

PRO SHOP & CART STORAGE AT  
CENTENNIAL PARK FOR THE  
TOWN OF MUNSTER  
1005 S. CENTENNIAL DRIVE  
MUNSTER, INDIANA 46321

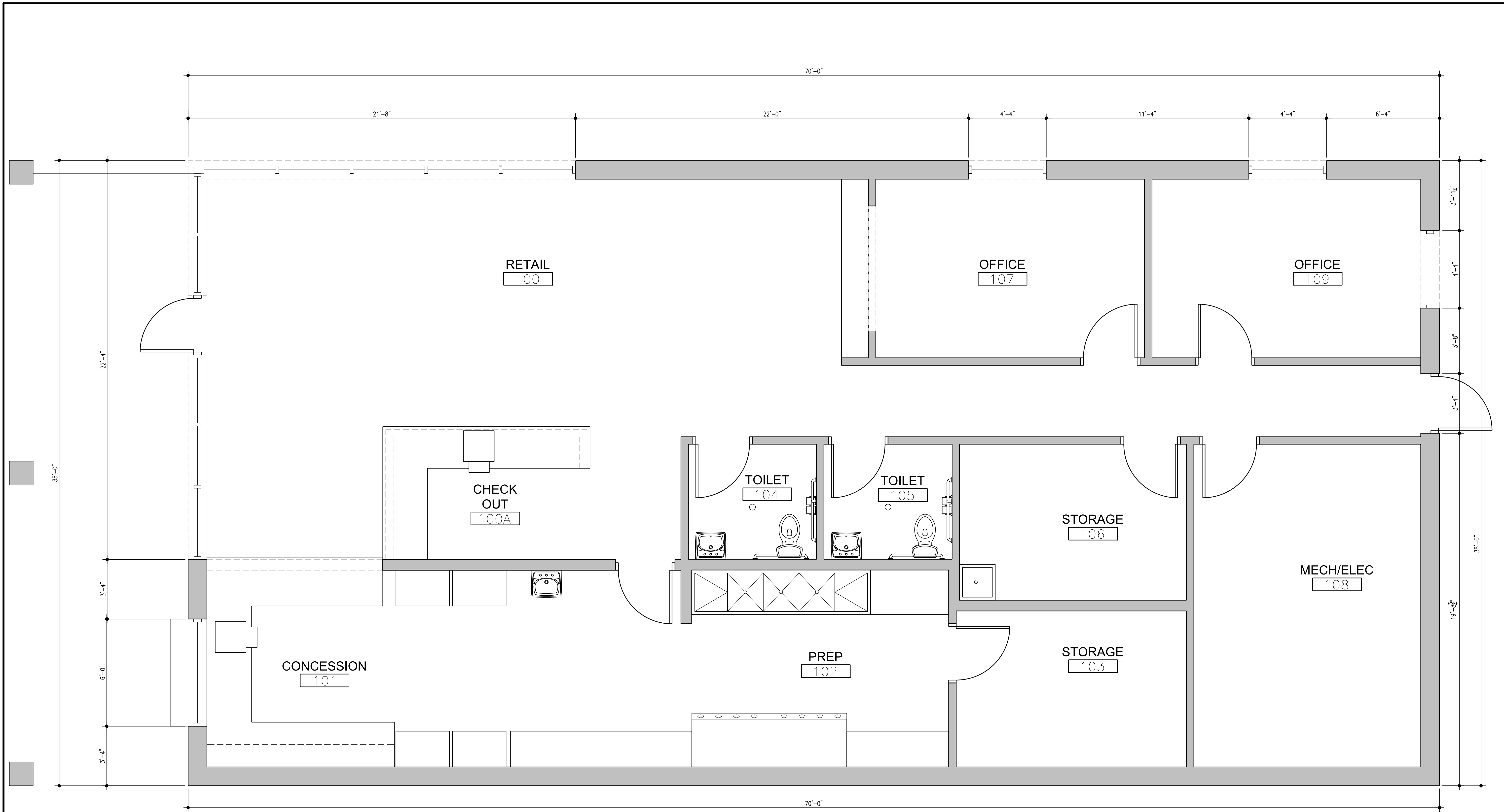
DATE  
03-03-22

22001

SHEET  
**C**  
1.2.0



X:\Munster - Town of22001 Centennial Park Golf Pro Shop\Drawings\la100 floorplan.dwg



FLOOR PLAN - PRO-SHOP  
OPTION 2  
SCALE: 3/8" = 1'-0"  
PLAN NORTH

PRELIMINARY - NOT FOR CONSTRUCTION

DATE  
03-03-22

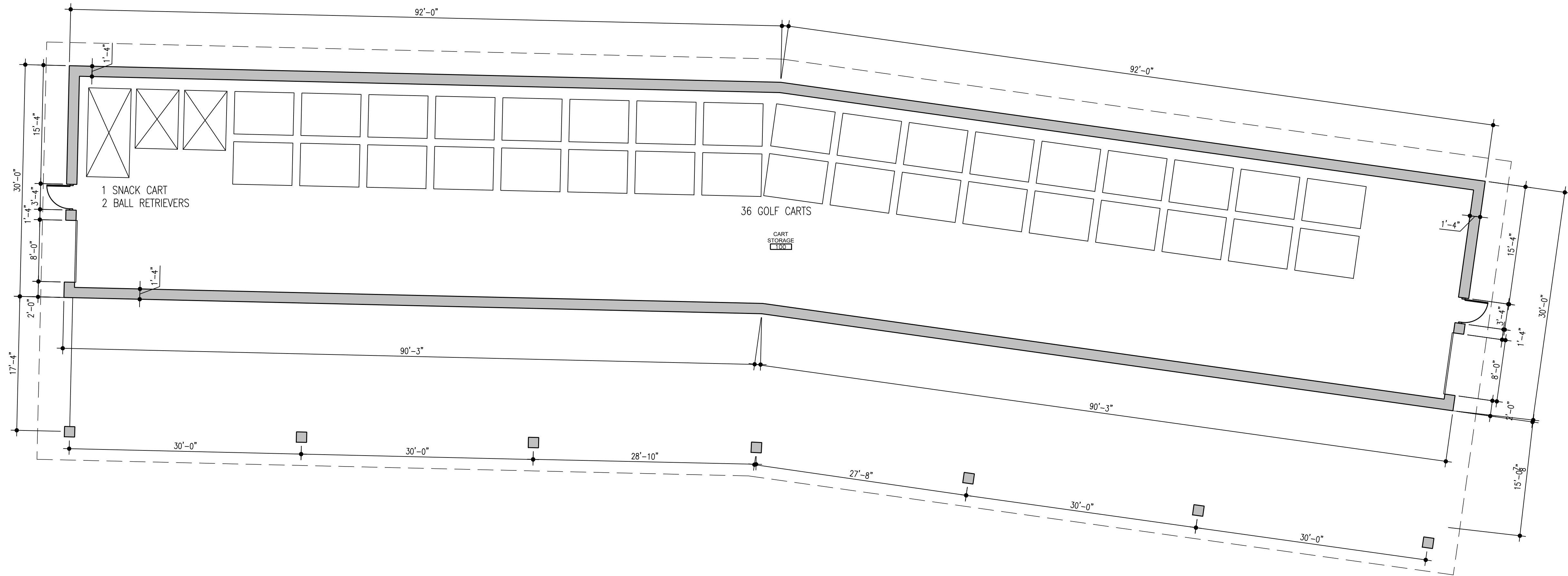
PRO SHOP & CART STORAGE AT  
CENTENNIAL PARK FOR THE  
TOWN OF MUNSTER  
1005 S. CENTENNIAL DRIVE  
MUNSTER, INDIANA 46321

**CSK ARCHITECTS, P.C.**  
THOMAS E. KUHN AIA, CSI, ALA - SCOTT GOODWIN AIA, ALA, LEED AP - JEREMY S. GILBERT CSI  
6919 W. LINCOLN HIGHWAY  
219-322-5950  
www.cskarchitects.com  
CROWN POINT, IN 46307

22001

SHEET  
A  
1.1.0

X:\Munster - Town of22001 Centennial Park Golf Pro Shop\Drawings\la100 floorplan.dwg



FLOOR PLAN - PRO-SHOP  
OPTION 2  
SCALE: 1/8" = 1'-0"  
PLAN NORTH

PRELIMINARY - NOT FOR CONSTRUCTION

CSK ARCHITECTS, P.C.

THOMAS E. KUHN AIA, CSI, ALA - SCOTT GOODWIN AIA, ALA, LEED AP - JEREMY S. GILBERT CSI

6919 W. LINCOLN HIGHWAY

219-322-5950

CROWN POINT, IN 46307

www.cskarchitects.com

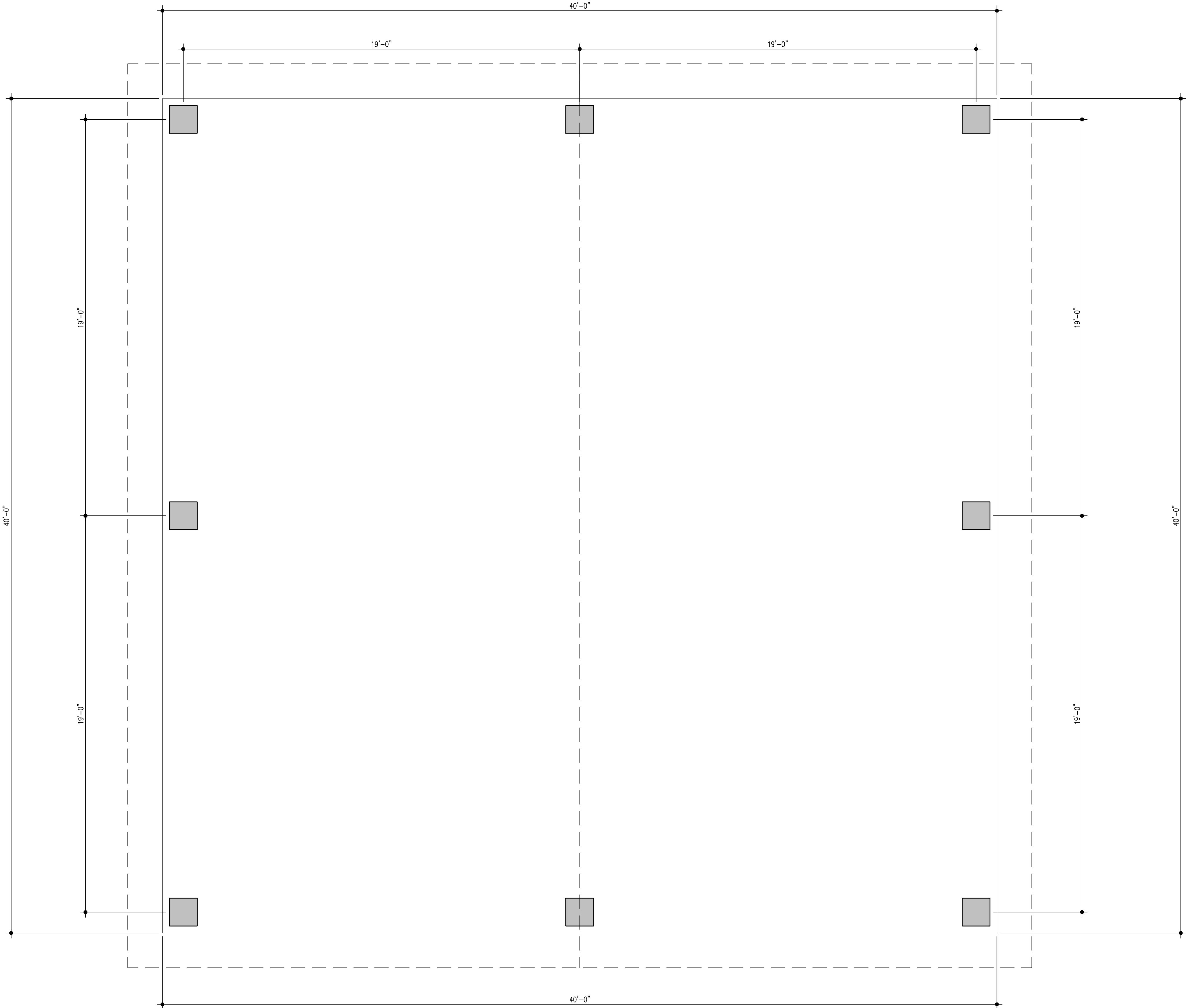
22001

SHEET  
A  
1.2.1

PRO SHOP & CART STORAGE AT  
CENTENNIAL PARK FOR THE  
TOWN OF MUNSTER  
1005 S. CENTENNIAL DRIVE  
MUNSTER, INDIANA 46321

DATE  
03-03-22

X:\Munster - Town of22001 Centennial Park Golf Pro Shop\Drawings\100 floorplan.dwg



FLOOR PLAN - SHELTER

SCALE: 3/8" = 1'-0"



PRELIMINARY - NOT FOR CONSTRUCTION

CSK ARCHITECTS, P.C.

THOMAS E. KUHN AIA, CSI, ALA - SCOTT GOODWIN AIA, ALA, LEED AP - JEREMY S. GILBERT CSI

6919 W. LINCOLN HIGHWAY

219-322-5950

CROWN POINT, IN 46307

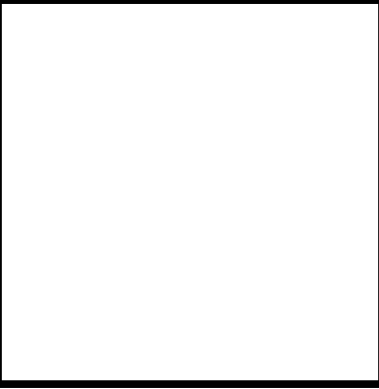
www.cskarchitects.com

22001

SHEET  
A  
1.3.0

PRO SHOP & CART STORAGE AT  
CENTENNIAL PARK FOR THE  
TOWN OF MUNSTER  
1005 S. CENTENNIAL DRIVE  
MUNSTER, INDIANA 46321

DATE  
03-03-22







SOUTH VIEW

SITE OVERALL

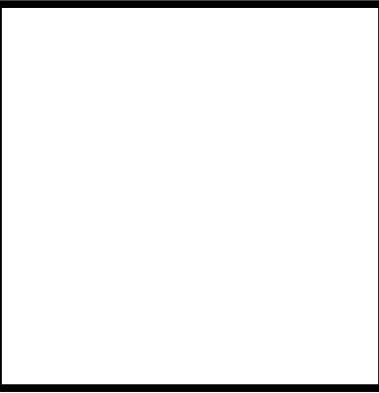
SCALE:



SOUTH VIEW

ENTRY

SCALE:



DATE  
03-03-22

PRO SHOP & CART STORAGE AT  
CENTENNIAL PARK FOR THE  
TOWN OF MUNSTER  
1005 S. CENTENNIAL DRIVE  
MUNSTER, INDIANA 46321

**CSK ARCHITECTS, P.C.**  
THOMAS E. KUHN, AIA, CSI, ALA - SCOTT GOODWIN AIA, ALA, LEED AP - JEREMY S. GILBERT CSI  
6919 W. LINCOLN HIGHWAY  
CROWN POINT, IN 46307  
219-322-5950  
www.cskarchitects.com

22001

SHEET  
A  
2.1.0





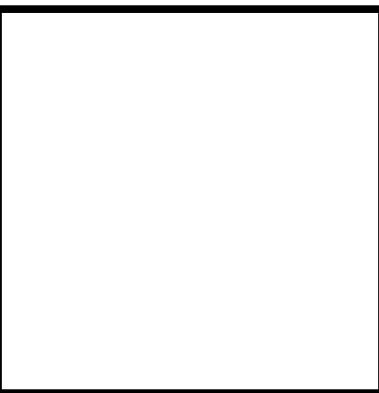
WEST VIEW

PRO-SHOP & CART PARKING SCALE:



SOUTHEAST VIEW

CART STORAGE, DRIVING RANGE & PATH SCALE:



DATE  
03-03-22

PRO SHOP & CART STORAGE AT  
CENTENNIAL PARK FOR THE  
TOWN OF MUNSTER  
1005 S. CENTENNIAL DRIVE  
MUNSTER, INDIANA 46321

**CSK ARCHITECTS, P.C.**  
THOMAS E. KUHN AIA, CSI, ALA - SCOTT GOODWIN AIA, ALA, LEED AP - JEREMY S. GILBERT CSI  
6919 W. LINCOLN HIGHWAY CROWN POINT, IN 46307  
219-322-5950 www.cskarchitects.com

22001

SHEET  
A  
2.1.1

PRELIMINARY - NOT FOR CONSTRUCTION





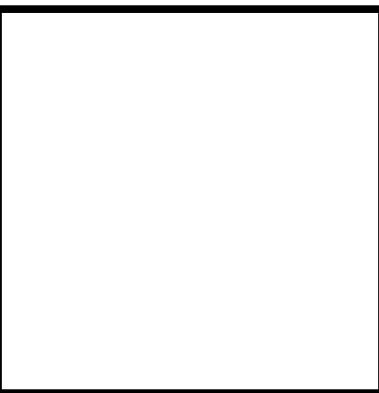
NORTHWEST VIEW

CART STORAGE & DRIVING RANGE SCALE:



NORTHEAST VIEW

CART STORAGE & DRIVING RANGE SCALE:



DATE  
03-03-22

PRO SHOP & CART STORAGE AT  
CENTENNIAL PARK FOR THE  
TOWN OF MUNSTER  
1005 S. CENTENNIAL DRIVE  
MUNSTER, INDIANA 46321

**CSK ARCHITECTS, P.C.**  
THOMAS E. KUHN, AIA, CSI, ALA - SCOTT GOODWIN AIA, ALA, LEED AP - JEREMY S. GILBERT CSI  
6919 W. LINCOLN HIGHWAY  
CROWN POINT, IN 46307  
219-322-5950  
www.cskarchitects.com

22001

SHEET  
A  
2.1.2

PRELIMINARY - NOT FOR CONSTRUCTION

X:\Munster - Town of 22001 Centennial Park Golf Pro Shop Drawings\la 100 floorplan.dwg





WEST VIEW  
 CART PARKING & SHELTER SCALE:



SOUTH VIEW  
 SHELTER SCALE:

DATE  
 03-03-22

PRO SHOP & CART STORAGE AT  
 CENTENNIAL PARK FOR THE  
 TOWN OF MUNSTER  
 1005 S. CENTENNIAL DRIVE  
 MUNSTER, INDIANA 46321

**CSK ARCHITECTS, P.C.**  
 THOMAS E. KUHN AIA, CSI, ALA - SCOTT GOODWIN AIA, ALA, LEED AP - JEREMY S. GILBERT CSI  
 6919 W. LINCOLN HIGHWAY CROWN POINT, IN 46307  
 219-322-5950 www.cskarchitects.com

22001

SHEET  
**A**  
 2.1.3

X:\Munster - Town of 22001 Centennial Park Golf Pro Shop\Drawings\la100 floorplan.dwg

PRELIMINARY - NOT FOR CONSTRUCTION